

HR70-14

~~TOP SECRET~~

NPIC/R-676/64

August 1964

TCS-7411/64

Copy 107

7 Pages

PHOTOGRAPHIC INTERPRETATION REPORT

# SLOINIM ARMY TRAINING AREA SOUTHEAST SLOINIM, USSR BELORUSSIAN MD

APPROVED FOR RELEASE  
HISTORICAL COLLECTION  
DIVISION HR70-14 DATE:  
07-18-2012



CIA



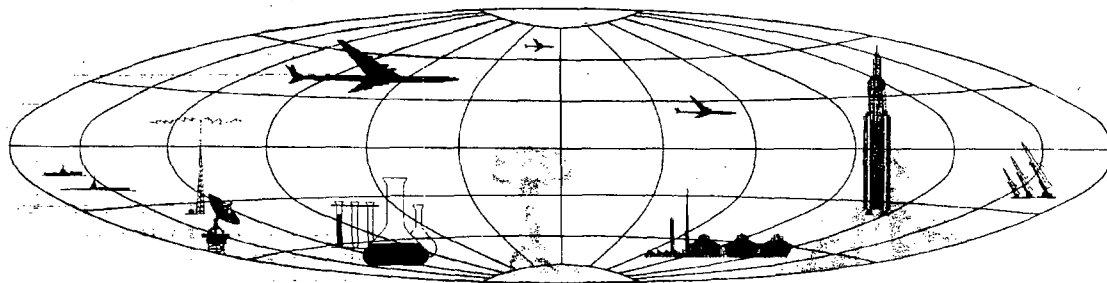
DIA

Handle Via **TALENT - KEYHOLE** Control Only

WARNING

This document contains classified information affecting the national security of the United States within the meaning of the espionage laws U. S. Code Title 18, Sections 793 and 794. The law prohibits its transmission or the revelation of its contents in any manner to an unauthorized person, as well as its use in any manner prejudicial to the safety or interest of the United States or for the benefit of any foreign government to the detriment of the United States. It is to be seen only by personnel especially indoctrinated and authorized to receive TALENT-KEYHOLE information. Its security must be maintained in accordance with KEYHOLE and TALENT regulations.

NATIONAL PHOTOGRAPHIC INTERPRETATION CENTER



~~TOP SECRET~~

GROUP 1  
Excluded from automatic  
downgrading and declassification

PREFACE

This report is one in a series on Soviet Ground Force and logistic installations being prepared for a DIA/CIA Panel. The series is being coordinated, published and disseminated by NPIC. The photographic analysis is being performed by the NPIC Photographic Analysis Group, the CIA Photographic Intelligence Division (NPIC), and the Production Center 1P1c (DIA). The photographic analysis for this particular report was performed by the NPIC Photographic Analysis Group.

In the interest of uniformity, the titles and letter designators for the facilities observed at these installations are identical with those appearing in the project requirement. When a specific facility is not observed both its title and letter designator are omitted in the report.

Titles and letter designators for the various facilities are as follows: (A) railroad service, (B) road service, (C) landing strips, (D) administrative and troop housing areas, (E) storage areas, (F) ammunition storage areas, (G) POL storage areas, (H) other buildings and facilities, (J) equipment storage/maintenance areas, (K) athletic fields, (L) small arms firing ranges, (M) driver training areas, (N) tank/assault gun firing ranges, (P) flat trajectory firing ranges, (Q) artillery emplacements (batteries), (R) infantry or combined arms field training area or courses, (S) special training facilities, (T) unidentified facilities or tracking activity.

SLONIM ARMY TRAINING AREA SOUTHEAST  
(53-02N 025-25E)  
SLONIM, GRODNENSKAYA OBLAST, USSR  
BELORUSSIAN MD

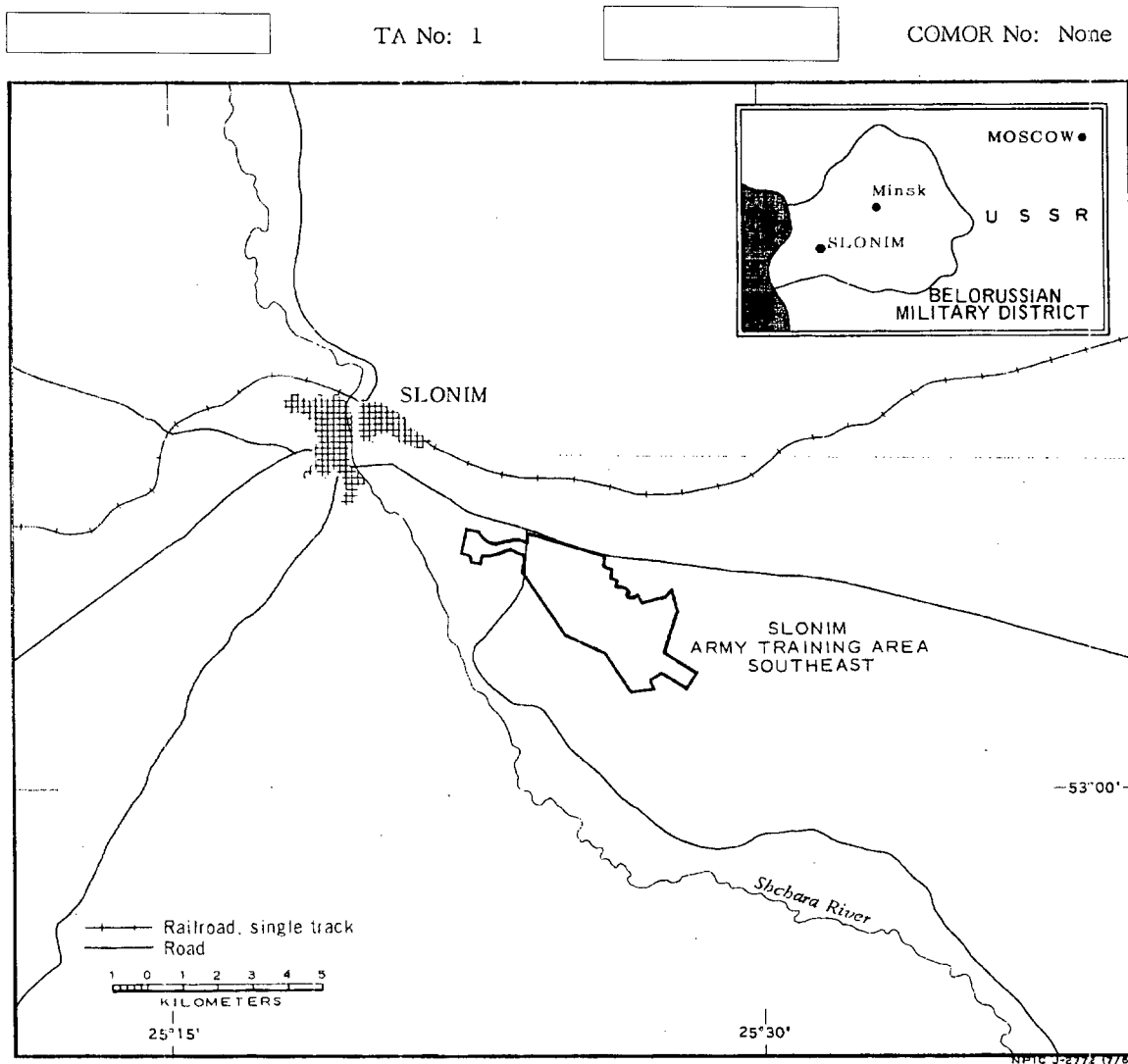
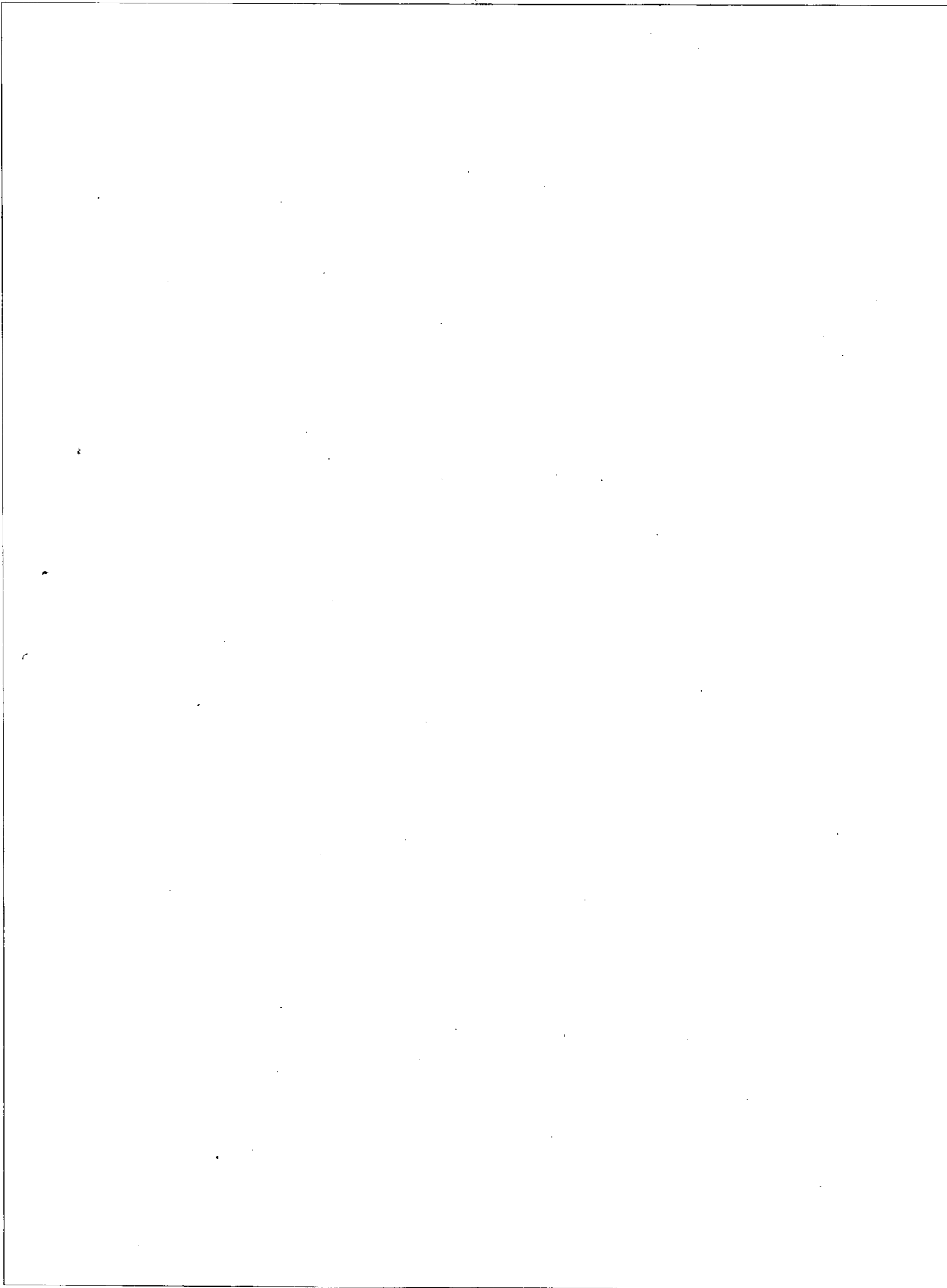


FIGURE 1. LOCATION OF SLONIM ARMY TRAINING AREA SOUTHEAST, SLONIM.



**SUMMARY**

The Slonim Army Training Area Southeast (TA-1) is located (Figure 1) 7 kilometers (km) southeast of Slonim (53-05N 025-19E). Slonim Army Barracks and Ordnance Depot (AL-2) is 8 km northwest of the training area. The Slonim-Baranovichi highway is adjacent to the north edge of the area. The Slonim-Baranovichi railroad is 2 km north of the area, but no transloading points were observed.

The training area (Figure 2) covers approximately 3,100 acres and is located on fairly level, open ground. The area contains a wheeled-vehicle driver-training course, a tracked-vehicle driver-training area, two tank/assault-gun firing ranges, a possible flat-trajectory range near one of the tank/assault-gun firing ranges, and an infantry field-training area.

This area was covered by 1956 TALENT photography and 13 KEYHOLE missions between May 1962 and February 1964. Compar-

ative analysis reveals the following significant changes between 1956 and May 1962: (a) deactivation of two firing lanes and three moving target runs, addition of one moving target run, lengthening of the two firing lanes at tank/assault-gun firing range N1; (b) addition of two firing lanes, lengthening of two firing lanes, deactivation of three moving target runs and addition of one moving target run at tank/assault-gun firing range N2; and (c) addition of four possible firing points and two possible moving target runs at the flat-trajectory range.

The level of activity increased between July 1956 and May 1962 and remained constant with medium usage between May 1962 and September 1963. Only the wheeled-vehicle driver-crew training area (M1) and one tank/assault-gun firing range (N1) were active on snow-covered photography of April 1963 when both facilities had light activity.

**DESCRIPTION OF INSTALLATION**

**Railroad Service**

The Slonim-Baranovichi railroad passes 2 km north of the area, but no transloading points are observed.

**Road Service**

Road service is provided by the Slonim-Baranovichi primary highway adjacent to the north edge of the area.

**Administrative and Troop Housing Area**

Administrative facilities and troop housing are probably available at the Slonim Army Barracks and Ordnance Depot (AL-2).

**Other Buildings**

Five support buildings are located throughout the installation. One building was added between 1956 and May 1962.

**Driver-Training Areas**

Area M1 is a closed-circuit, wheeled-vehicle driver-training area with a figure-8 driving course and three figure-8 courses. The area showed no change from July 1956 to September 1963, with light activity on April 1963 snow-covered photography, and medium activity on spring, summer and fall coverage.

Handle Via  
TALENT-KEYHOLE  
Control System Only

TCS-7411/64  
NPIC/R-676/64

Area M2 is an irregularly shaped, tracked-vehicle driver-training course. The area showed little change from July 1956 to September 1963. It was inactive during winter months with medium activity in spring, summer and fall.

**Tank/Assault-Gun Firing Ranges**

Area N1 is a 3,450-foot range\* with two 1,600-foot firing lanes and two moving target runs,\*\* one 90 degrees right and one 15 degrees right. Two lanes were deactivated between 1956 and May 1962. The two remaining lanes have been lengthened 700 feet. Three moving target runs were deactivated, one added, and the one remaining lengthened between 1956 and May 1962. The areas were observed to be more active on 1962 and 1963 KEYHOLE coverage than on 1956 TALENT coverage. Light activity was observed during April 1963.

Area N2 is a 4,000-foot range with four firing lanes, two 2,600 feet and two 2,065 feet, and two moving target runs, one 90 degrees right and one 15 degrees right. The two 2,065-foot lanes were added between 1956 and May 1962. The two 2,600-foot lanes were lengthened 1,600 feet between 1956 and May 1962. Three

\*The length of a range is the maximum distance from the static firing line to the moving target runs.

\*\*The angle of the moving target run is the angle formed by the target run and a perpendicular line from the static firing line to the target run at the control house position.

of the four moving target runs were deactivated and one added between 1956 and May 1962. Little activity was observed on 1956 TALENT, and consistently medium activity was observed on KEYHOLE coverage.

**Flat-Trajectory Firing Ranges**

Area P is two possible flat-trajectory firing ranges, one 1,225 feet and one 1,950 feet with two moving target runs, one 50 degrees left and one 120 degrees left. TALENT coverage revealed a facility with five moving target runs and numerous trenches; however, these are not visible on KEYHOLE coverage. An observation tower observed on TALENT coverage is visible. Four possible firing points were added between 1956 and May 1962. The two possible moving targets were added between 1956 and May 1962.

This area revealed little activity on TALENT and KEYHOLE coverage.

**Infantry or Combined-Arms Field-Training Area or Course**

Area R is an infantry field-training area. Trenches and foxholes were visible on TALENT coverage but not on KEYHOLE coverage. Ground scarring indicates light activity in the area. No change in the level of activity was observed between May 1962 and September 1963.

Handle Via  
TALENT-KEYHOLE  
Control System Only

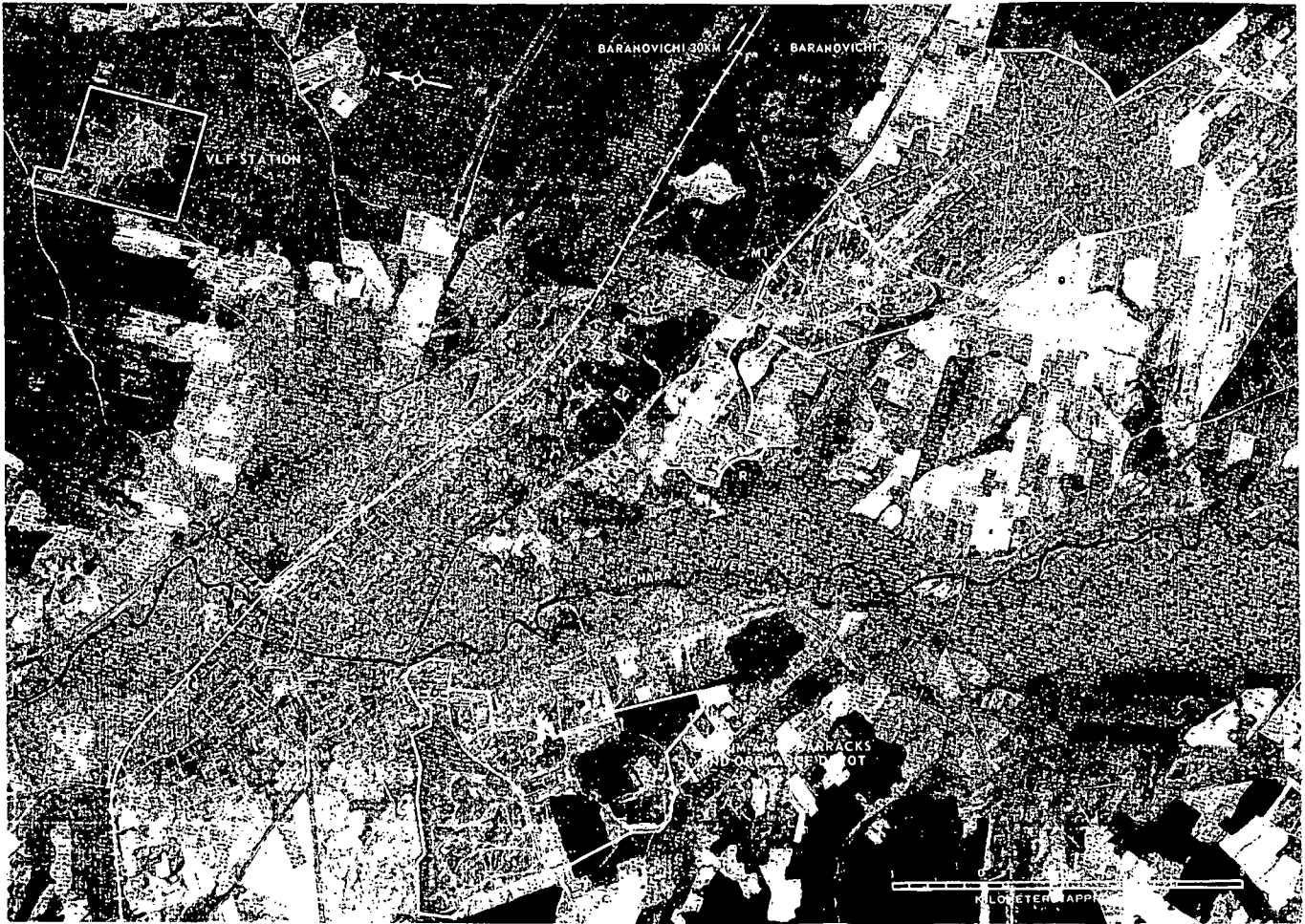
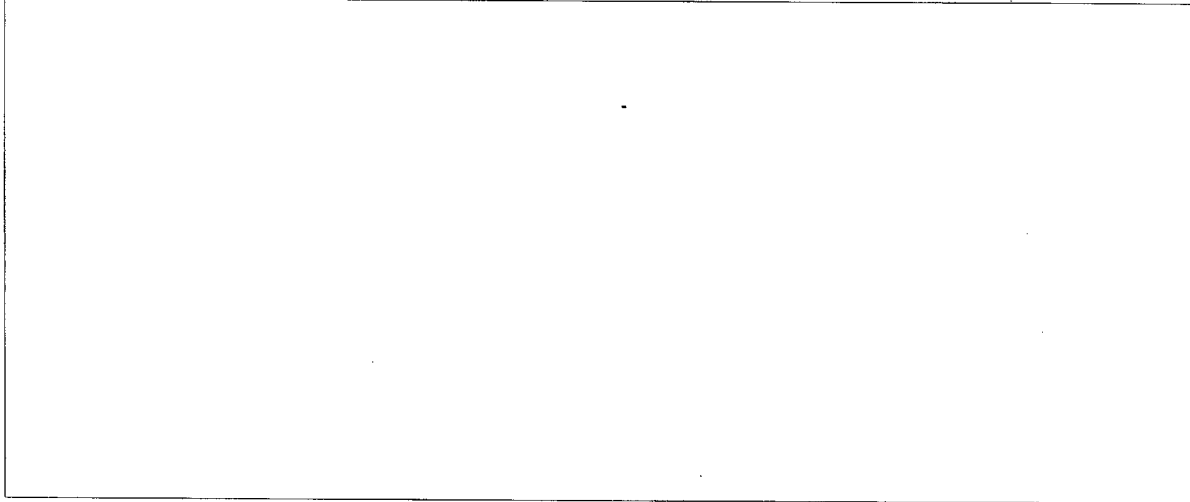


FIGURE 2. SLONIM ARMY TRAINING AREA SOUTHEAST, SLONIM, USSR, SEPTEMBER 1963.

REFERENCES

PHOTOGRAPHY



MAPS OR CHARTS

US Air Target Chart, Series 200, Sheet 0168-18HL, 3d ed, Dec 62 (SECRET)

DOCUMENTS

Army. DPIR 1-57, *Military Installations Slonim-Baranovichi Area, USSR*, 24 Jan 57 (TOP SECRET CHESS)

Army. PIM 9-63, *Area Search Slonim, USSR*, 1 Feb 63 (TOP SECRET RUFF)

NPIC. R-177-64, *Military Training Areas, Slonim, USSR, Belorussian MD*, Mar 64 (TOP SECRET CHESS RUFF)

DIA. PC-225/1-1-63, *Installations List, Soviet Ground Forces*, 1 Oct 63 (SECRET [redacted])

DIA. PC-225/1-2-63, *Training Areas, Soviet Ground Forces*, 1 Oct 63 (SECRET [redacted])

REQUIREMENT

C-RR4-81,111 (partial answer)

NPIC PROJECT

N-236/64



~~TOP SECRET~~

~~TOP SECRET~~