

HR70-14

~~TOP SECRET~~

NPIC/R-673/64

August 1964

TCS-7408/64

Copy 107

9 Pages

PHOTOGRAPHIC INTERPRETATION REPORT

# MINSK ARMY TRAINING AREA KALININA MINSK, USSR BELORUSSIAN MD

APPROVED FOR  
RELEASE - HISTORICAL  
COLLECTION DIVISION  
HR70-14 DATE:  
07-18-2012



CIA



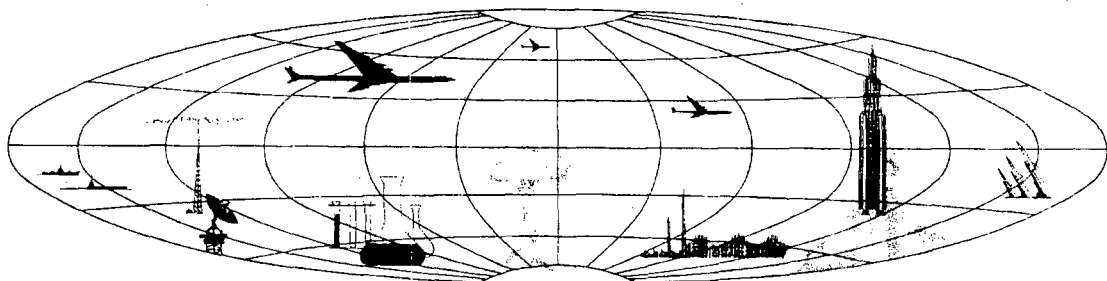
DIA

Handle Via **TALENT - KEYHOLE** Control Only

WARNING

This document contains classified information affecting the national security of the United States within the meaning of the espionage laws U. S. Code Title 18, Sections 793 and 794. The law prohibits its transmission or the revelation of its contents in any manner to an unauthorized person, as well as its use in any manner prejudicial to the safety or interest of the United States or for the benefit of any foreign government to the detriment of the United States. It is to be seen only by personnel especially indoctrinated and authorized to receive TALENT-KEYHOLE information. Its security must be maintained in accordance with KEYHOLE and TALENT regulations.

NATIONAL PHOTOGRAPHIC INTERPRETATION CENTER



~~TOP SECRET~~

GROUP 1  
Excluded from automatic  
downgrading and declassification

PREFACE

This report is one in a series on Soviet Ground Force and logistic installations being prepared for a DIA/CIA Panel. The series is being coordinated, published and disseminated by NPIC. The photographic analysis is being performed by the NPIC Photographic Analysis Group, the CIA Photographic Intelligence Division (NPIC), and the Production Center 1P1c (DIA). The photographic analysis for this particular report was performed by the NPIC Photographic Analysis Group.

In the interest of uniformity, the titles and letter designators for the facilities observed at these installations are identical with those appearing in the project requirement. When a specific facility is not observed both its title and letter designator are omitted in the report.

Titles and letter designators for the various facilities are as follows: (A) railroad service, (B) road service, (C) landing strips, (D) administrative and troop housing areas, (E) storage areas, (F) ammunition storage areas, (G) POL storage areas, (H) other buildings and facilities, (J) equipment storage/maintenance areas, (K) athletic fields, (L) small arms firing ranges, (M) driver training areas, (N) tank/assault gun firing ranges, (P) flat trajectory firing ranges, (Q) artillery emplacements (batteries), (R) infantry or combined arms field training area or courses, (S) special training facilities, (T) unidentified facilities or tracking activity.

MINSK ARMY TRAINING AREA KALININA  
(53-55N 027-45E)  
MINSK, MINSKAYA OBLAST, USSR  
BELORUSSIAN MD

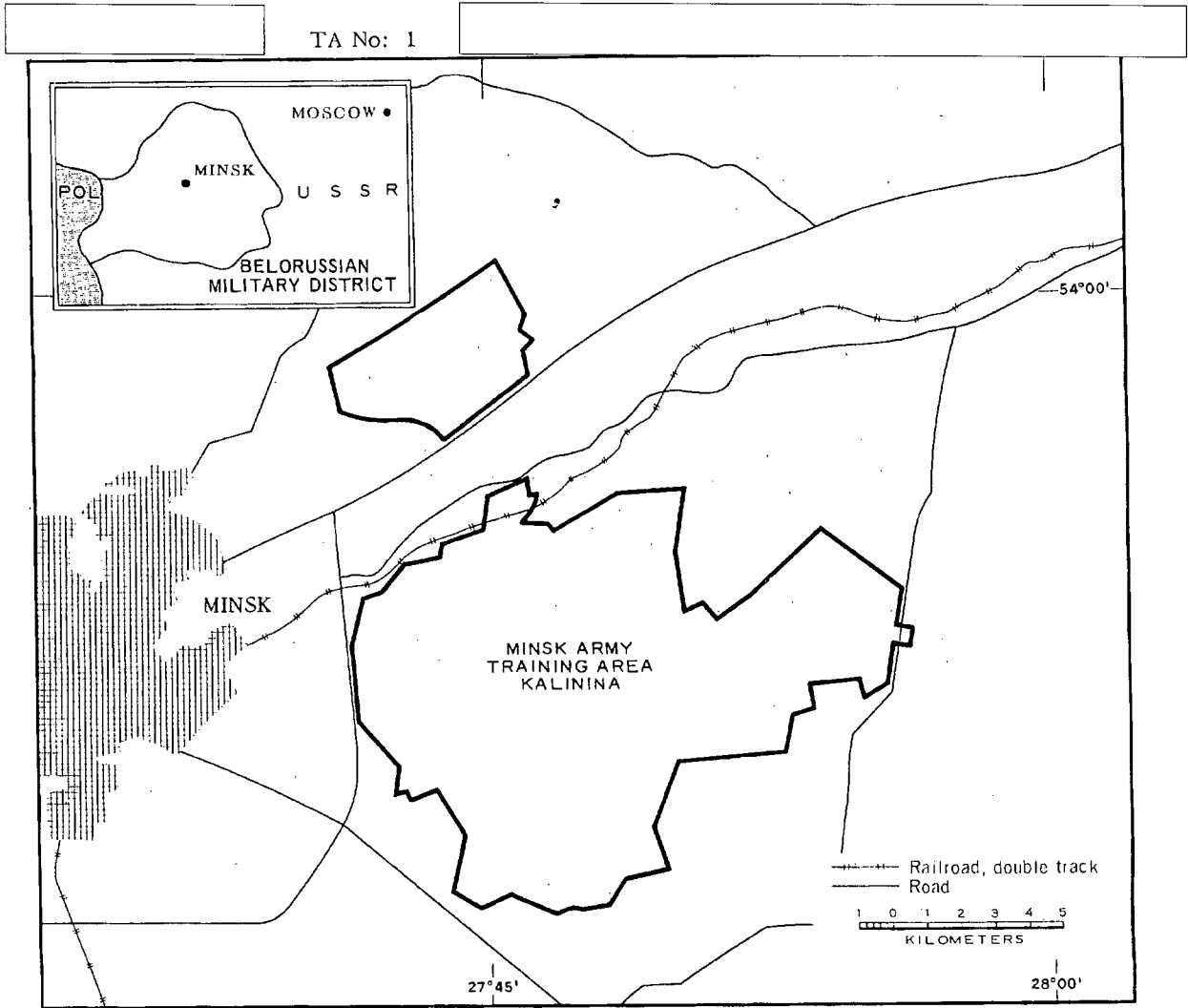


FIGURE 1. LOCATION OF MINSK ARMY TRAINING AREA KALININA, MINSK.

NPIC J-2708 (7/64)

SUMMARY

Minsk Army Training Area Kalinina is located 10 kilometers (km) east of Minsk (53-54N 027-35E) with the major portion south of the Minsk-Moscow Railroad (Figure 1). The training area is directly associated with Minsk Army Barracks Uruchye (AL-1) and Minsk Barracks Kalinina [ ] which separate the two portions of the training area. All-weather roads connect the two portions of the training area with the two barracks areas. The Minsk-Moscow rail line passes through the northern section of the larger portion of the training area. A possible transloading point is located in a small secured area served by a single-track spur.

The larger portion of the training area (Figure 2) covers approximately 28,280 acres and is located on generally level ground in a fairly heavily wooded area. The smaller portion covers approximately 3,500 acres and is located on level ground in a largely wooded area with the major training facilities in generally cleared areas. Troop housing and logistical support for the training area is provided by Minsk Army Barracks Uruchye and Minsk Barracks Kalinina. Two bivouac areas are in the southeast portion of the larger area.

All driver-training facilities are located in the larger area and consist of two tracked-vehicle and one wheeled-vehicle driver-training courses. An equipment storage/maintenance area is adjacent to one of the tracked-vehicle driver-training courses.

Five tank/assault-gun firing ranges and a flat-trajectory range are in the overall training area. There are also 10 field artillery battery emplacements. Two probable impact areas are located near the center of the larger area.

Two infantry field-training areas and a combined-arms field-training course are located in the larger area. Near the combined-arms course are two unidentified training facilities which are possibly firing facilities.

In the smaller area are a probable wheeled-vehicle-mounted automatic weapons firing range, a probable automatic weapons firing range, and a third firing range which is a combination of the other two.

The training area was covered by 1956 TALENT photography and 11 KEYHOLE missions between August 1961 and February 1964. Comparative analysis reveals the following significant changes between 1956 and August 1961. Area M2, a wheeled-vehicle driver-training course, was converted to a tracked-vehicle driver-training course; Area R3, an infantry field-training course, was converted to a combined-arms training course (areas T1-2); construction of two unidentified training facilities; and conversion of an infantry field-training course to a combined probable wheeled-vehicle-mounted automatic weapons and probable small arms range. Other significant changes observed between 1956 and February 1964: (1) construction of 39 buildings in bivouac area D1 between 1956 and June 1962; (2) construction of three buildings in bivouac Area D2 between 1956 and June 1963; (3) construction of the equipment storage/maintenance Area J between July 1962 and June 1963; (4) construction of two closed-circuit driver-training courses, one tracked in Area M1 and one wheeled in Area M3, between July 1962 and June 1963; (5) construction of a tank/assault-gun firing range in Area N3 between 1956 and July 1962; (6) conversion of a flat-trajectory range to a tank/assault-gun firing range in Area N4 between 1956 and June 1962;

and (7) conversion of a tracked-vehicle driver-training course to a probable wheeled-vehicle-mounted automatic weapons firing range in Area S1.

The general level of activity remained about the same over the August 1961-August 1963

period. The increased use of tracked vehicles was apparent on KEYHOLE coverage. The only winter activity observed on snow-covered photography of February 1964 was in the probable wheeled-vehicle-mounted automatic weapons firing range (S3).

### DESCRIPTION OF INSTALLATION

#### Railroad Service

The Minsk-Moscow railroad passes through the area. A single-track spur into a small secured area provides a possible transloading point (Area A). There appears to be open storage alongside the tracks.

#### Road Service

The installation is connected by all-weather roads to Minsk Army Barracks Uruchye (AL-1), Minsk Barracks Kalinina, Minsk-Moscow highway, and Minsk-Marina Gorka highway.

#### Aircraft Landing Strip

Minsk Stepyanka Airfield is located in the western portion of the area.

#### Administrative and Troop Housing Areas

Area D1 contains nine administration buildings and 30 small unidentified buildings. This bivouac area covers 110 acres. Activity increased between 1956 and June 1962. All buildings were constructed between 1956 and June 1962.

Area D2 contains three support buildings constructed between 1956 and June 1963. This bivouac area covers 145 acres. Decreased activity was noted between 1956 and June 1963.

#### Other Buildings

Eleven miscellaneous support buildings are located throughout the installation. Three of these buildings were added between July 1962 and July 1963 and appear to be associated with Q5.

#### Equipment Storage/Maintenance Area

Area J contains six 120- by 30-foot storage/maintenance buildings and eight support buildings. These buildings were added between July 1962 and June 1963.

#### Athletic Field

Area K is an athletic field adjacent to Area D1, apparently deactivated between 1956 and June 1962. A road now crosses the field.

#### Small Arms Firing Ranges

Area L1 is a 550- by 40-foot range with light activity.

Area L2 is a 350- by 190-foot small arms firing range. Activity increased slightly between 1956 and August 1961 with light activity between August 1961 and August 1963.

#### Driver-Training Areas

Area M1 is a closed-circuit tracked-vehicle driver-training course added between July 1962 and June 1963. The area reveals a consistent medium level of activity.

Area M2 is a closed-circuit tracked-vehicle driver-training course. In 1956 this area was used for wheeled vehicles. Between 1956 and August 1961 it was converted to a tracked-vehicle area. Activity was fairly heavy during the summer months.

Area M3 is a closed-circuit wheeled-vehicle driver-training course added between July 1962 and June 1963. Activity is consistently light.

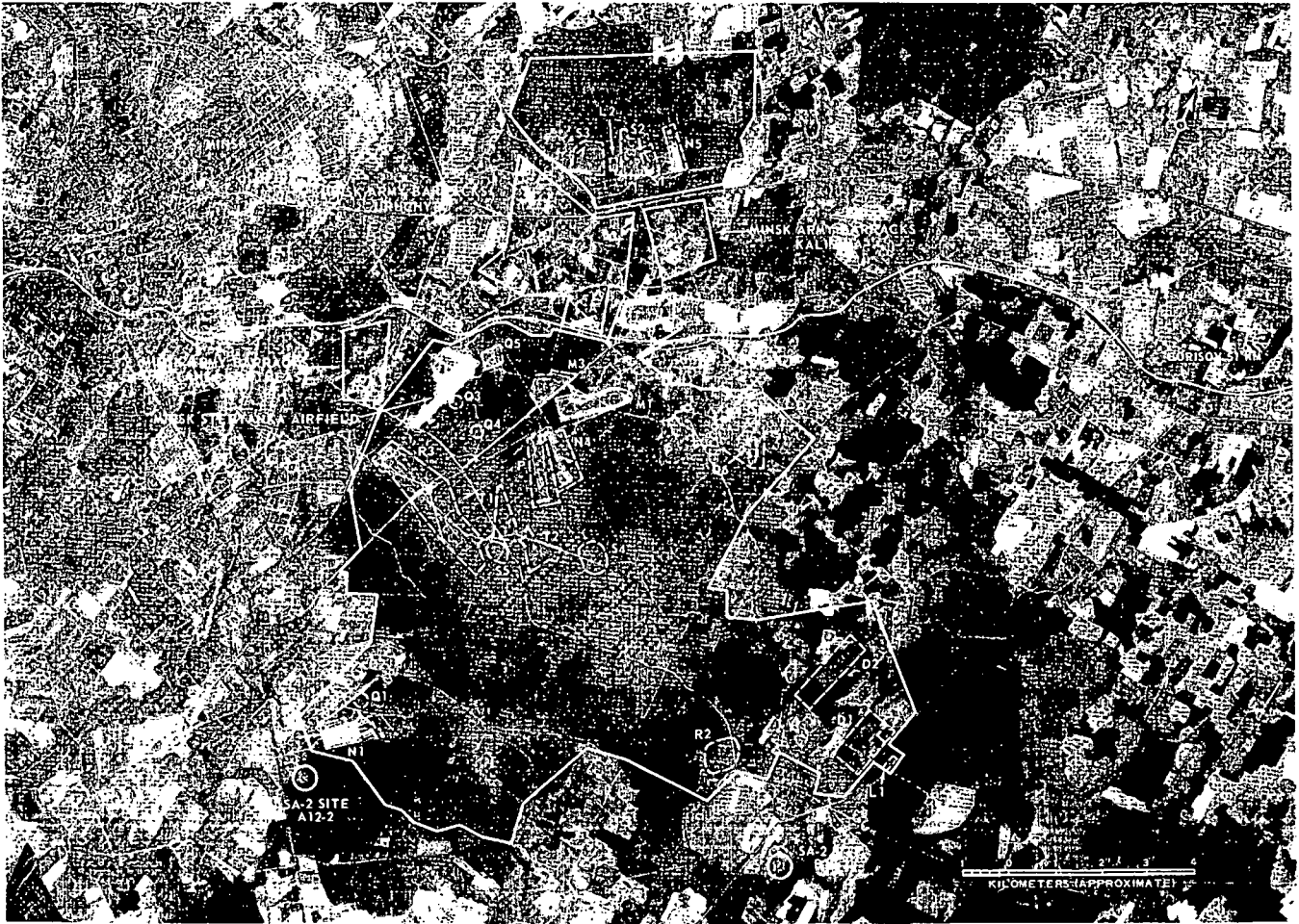


FIGURE 2. MINSK ARMY TRAINING AREA KALININA, MINSK, USSR, AUGUST 1963.

Handle Via  
TALENT-KEYHOLE  
Control System Only

TCS-7408/64  
NPIC/R-673/64

**Tank/Assault-Gun Firing Ranges**

Area N1 is a 4,300-foot range\* with three 2,700-foot firing lanes and three stationary targets at 7,700 feet, one moving target run\*\* at 130 degrees right, and three moving target runs at 170 degrees left. Activity increased from 1956 to August 1961. The number of lanes remained the same in 1956 and on KEYHOLE coverage but the length increased 1,200 feet. Three moving targets were activated and four moving targets and three stationary targets were constructed between 1956 and July 1962. Consistently heavy activity was observed from July 1962 to August 1963.

Area N2 is a 4,200-foot range with three 2,800-foot firing lanes and three stationary targets at 7,700 feet, one moving target run at 140 degrees right, and one moving target run at 110 degrees right. Activity increased from 1956 to August 1961. One lane was deactivated and three lanes increased 1,400 feet in length between 1956 and July 1962. Moving and stationary targets were constructed between 1956 and July 1962. Consistently heavy activity was noted between July 1962 and August 1963.

Area N3 is a 3,300-foot range with two 1,600-foot firing lanes and two moving target runs, one 70 degrees left and one 160 degrees left. All facilities were constructed between 1956 and July 1962. Light activity was observed between July 1962 and August 1963.

Area N4 is a 3,800-foot range with three 2,500-foot firing lanes and four moving target runs, one 90 degrees right, two 10 degrees right, one 135 degrees left, and three possible moving targets at 180 degrees. This range was a flat trajectory range in 1956. Between 1956 and June 1962 all present facilities were added.

\*The length of a range is the maximum distance from the static firing line to the moving target runs and/or impact area.

\*\*The angle of the moving target run is the angle formed by the target run and a perpendicular line from the static firing line to the target run at the control house position.

Activity was light between June 1962 and August 1963.

Area N5 is a 3,200-foot range with two 2,000-foot firing lanes and one moving target run at 85 degrees left. The length of the lanes was reduced from 3,200 to 2,000 feet between 1956 and August 1961. Activity was consistently fairly heavy.

**Flat-Trajectory Firing Range**

Area P is a 4,500-foot flat trajectory firing range with one moving target run at 80 degrees right. Six firing points were present on July 1963 coverage. Four firing points observed in 1956 were removed by July 1963.

**Artillery Emplacements (Batteries)**

Area Q1 is a four-position FA emplacement.

Area Q2 is a four-position FA emplacement first observed in July 1962.

Area Q3 is a four-position FA emplacement.

Area Q4 is a four-position FA emplacement first observed in August 1961.

Area Q5 consists of three 6-gun FA emplacements located in Area R1 (Infantry Field Training Area). Positions were first observed in July 1963.

Area Q6 consists of two 6-gun FA emplacements located in Area R1. The positions were first observed in July 1962.

Area Q7 is a four position FA emplacement.

TALENT photography reveals numerous additional firing positions which are not discernible on KEYHOLE because of small scale and quality.

**Infantry or Combined-Arms Field-Training Areas or Courses**

Area R1 is an infantry field-training area. It contains numerous trench systems, trenches and foxholes. Increased activity was observed between 1956 and August 1961, and activity was consistently fairly heavy between August 1961 and August 1963.

Area R2 is an infantry field-training area

Handle Via  
TALENT-KEYHOLE  
Control System Only

with consistently light activity between 1956 and August 1963.

Area R3 is a combined-arms training course. In 1956, this area was an infantry training course. It was converted to a combined-arms course between 1956 and August 1961. Activity was consistently heavy from August 1961 through August 1963.

**Special Training Facilities**

Area S1 is a probable wheeled-vehicle-mounted automatic weapons firing range. There are two loops for vehicles and two moving target runs, one at 90 degrees right and one at 20 degrees right. Maximum target distance is 1,600 feet. In 1956 this area was a tracked-vehicle driver-training course. Current usage was first observed in July 1963. There was medium activity in July 1963 and August 1963.

Area S2 is a probable automatic weapons firing range. There are at least 15 moving target runs at different angles. Maximum target distance is 3,000 feet, minimum 800 feet. Only 10 moving targets were present in 1956. Activity was light to medium from August 1961 through August 1963. An undetermined number of firing points are along a 2,400-foot static firing line.

Area S3 is a combined probable small arms firing range and wheeled-vehicle-mounted automatic weapons firing range. The area consists of two moving target runs, one at 70 degrees left and one at 15 degrees left, and one loop for wheeled-vehicles. Maximum target distance from the vehicle loop to the moving targets is 2,000 feet. In 1956, this was an infantry combat course with numerous trenches and six moving targets. Trenches and moving targets were gone by August 1961. The two moving targets and vehicle loop were present in August 1961. There are an undetermined number of firing points along a 1,700-foot static firing line. Maximum target distance from the firing line to the

moving targets is 1,700 feet. Activity was consistently light between August 1961 and August 1963. The vehicle loop and firing line were active on snow-covered February 1964 photography.

Area S4 is a probable impact area which covers approximately 220 acres. It was readily apparent in 1956, but small scale of KEYHOLE photography precludes confirmation. Activity increased between August 1961 and August 1963.

Area S5 is a probable impact area which covers approximately 76 acres. It was readily apparent in 1956, but small scale KEYHOLE photography precludes confirmation.

**Unidentified Facilities or Tracked Activity**

Area T1 consists of two points with radiating scars. These scars intersect at approximately a 90-degree angle. One point has five scars, and one has seven scars. The point with five scars appears active while the seven-scar point has little activity. The location near Area R3 and Area S5 indicates some type of firing facility. Scars from the five-scar facility are 2,200 feet in length, while the scars from the seven-scar facility are 3,850 feet long. The five-scar facility was first observed in August 1961. The seven-scar facility was first observed in June 1962. Activity remained constant through August 1963.

Area T2 consists of two points with scars radiating from the points in the same direction. One point has eight scars, one has four. Nine parallel lines intersect the 12 scars at roughly a 50-degree angle. The length of the 12 scars is 2,750 feet. The location near Area R3 and Area S5 indicates some type of firing facility. These two points were first observed in August 1961. The nine parallel scars were added between July 1962 and June 1963. Both sets of radiating scars and the parallel scars appear active.

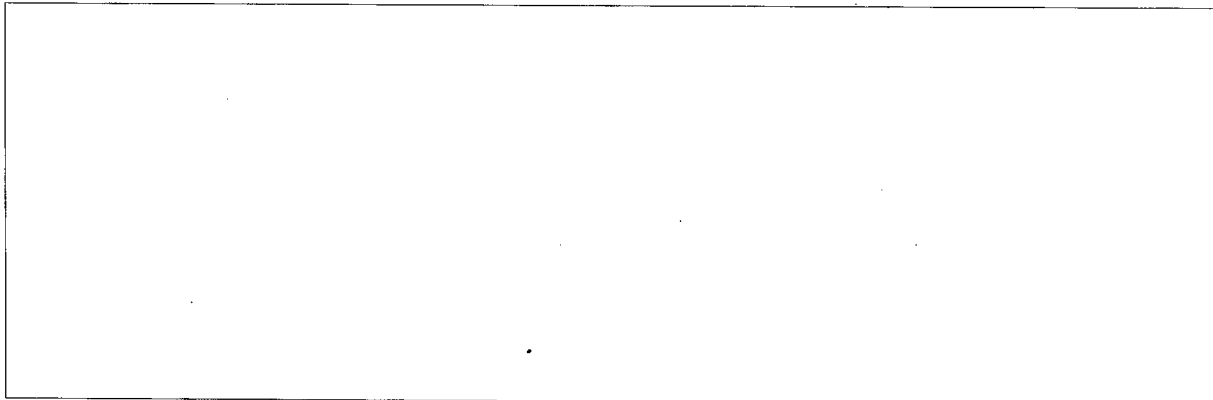


Handle Via  
TALENT-KEYHOLE  
Control System Only

TCS-7408/64  
NPIC/R-673/64

REFERENCES

PHOTOGRAPHY



MAPS OR CHARTS

US Air Target Chart, Series 200, Sheet 0168-14HL, 2d ed, Dec 62 (SECRET)

US Air Target Chart, Series 100, Sheet 0168-9997-100A, 2d ed, Feb 52 (CONFIDENTIAL)

DOCUMENTS

Army. DPIR-10-57, *Minsk Military Reservation*, 27 May 57 (TOP SECRET CHESS)

Army. PIB-TK-132-63, *Training Area, Minsk, USSR*, 5 Nov 63 (TOP SECRET CHESS RUFF)

NPIC. NPIC/R-152/64, *Military Training Area, Minsk, USSR*, Feb 64 (TOP SECRET CHESS RUFF)

DIA. PC-225/1-1-63, *Installations List, Soviet Ground Forces*, 1 Oct 63 (SECRET [redacted])

[redacted]

DIA. PC-225/1-2-63, *Training Areas, Soviet Ground Forces*, 1 Oct 63 (SECRET [redacted])

[redacted]

REQUIREMENT

C-RR4-81,111 (partial answer)

NPIC PROJECT

N-236/64

Handle Via  
TALENT-KEYHOLE  
Control System Only

~~TOP SECRET~~

~~TOP SECRET~~