

PHOTOGRAPHIC INTERPRETATION REPORT

SLUTSK ARMY BARRACKS SOUTH SLUTSK, USSR BELORUSSIAN MD

APPROVED FOR
RELEASE -
HISTORICAL
COLLECTION
DIVISION HR70-14
DATE: 07-18-2012



CIA



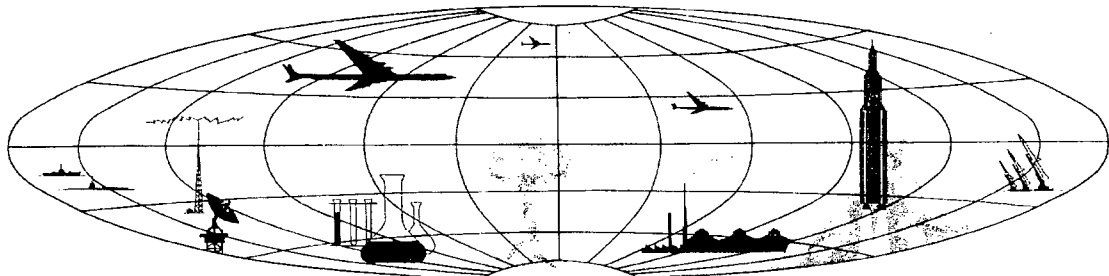
DIA

Handle Via **TALENT - KEYHOLE** Control Only

WARNING

This document contains classified information affecting the national security of the United States within the meaning of the espionage laws U. S. Code Title 18, Sections 793 and 794. The law prohibits its transmission or the revelation of its contents in any manner to an unauthorized person, as well as its use in any manner prejudicial to the safety or interest of the United States or for the benefit of any foreign government to the detriment of the United States. It is to be seen only by personnel especially indoctrinated and authorized to receive TALENT-KEYHOLE information. Its security must be maintained in accordance with KEYHOLE and TALENT regulations.

NATIONAL PHOTOGRAPHIC INTERPRETATION CENTER



~~TOP SECRET~~

GROUP 1
Excluded from automatic
downgrading and declassification

PREFACE

This report is one in a series on Soviet Ground Force and logistic installations being prepared for a DIA/CIA Panel. The series is being coordinated, published and disseminated by NPIC. The photographic analysis is being performed by the NPIC Photographic Analysis Group, the CIA Photographic Intelligence Division (NPIC), and the Production Center LPIC (DIA). The photographic analysis for this particular report was performed by the NPIC Photographic Analysis Group.

In the interest of uniformity, the titles and letter designators for the facilities observed at these installations are identical with those appearing in the project requirement. When a specific facility is not observed both its title and letter designator are omitted in the report.

Titles and letter designators for the various facilities are as follows: (A) railroad service, (B) road service, (C) landing strips, (D) administrative and troop housing areas, (E) storage areas, (F) ammunition storage areas, (G) POL storage areas, (H) other buildings and facilities, (J) equipment storage/maintenance areas, (K) athletic fields, (L) small arms firing ranges, (M) driver training areas, (N) tank/assault gun firing ranges, (P) flat trajectory firing ranges, (Q) artillery emplacements (batteries), (R) infantry or combined arms field training area or courses, (S) special training facilities, (T) unidentified facilities or tracking activity.

NPIC/R-506/64

SLUTSK ARMY BARRACKS SOUTH

(53-00N 027-34E)

SLUTSK, MINSKAYA OBLAST, USSR

BELORUSSIAN MD

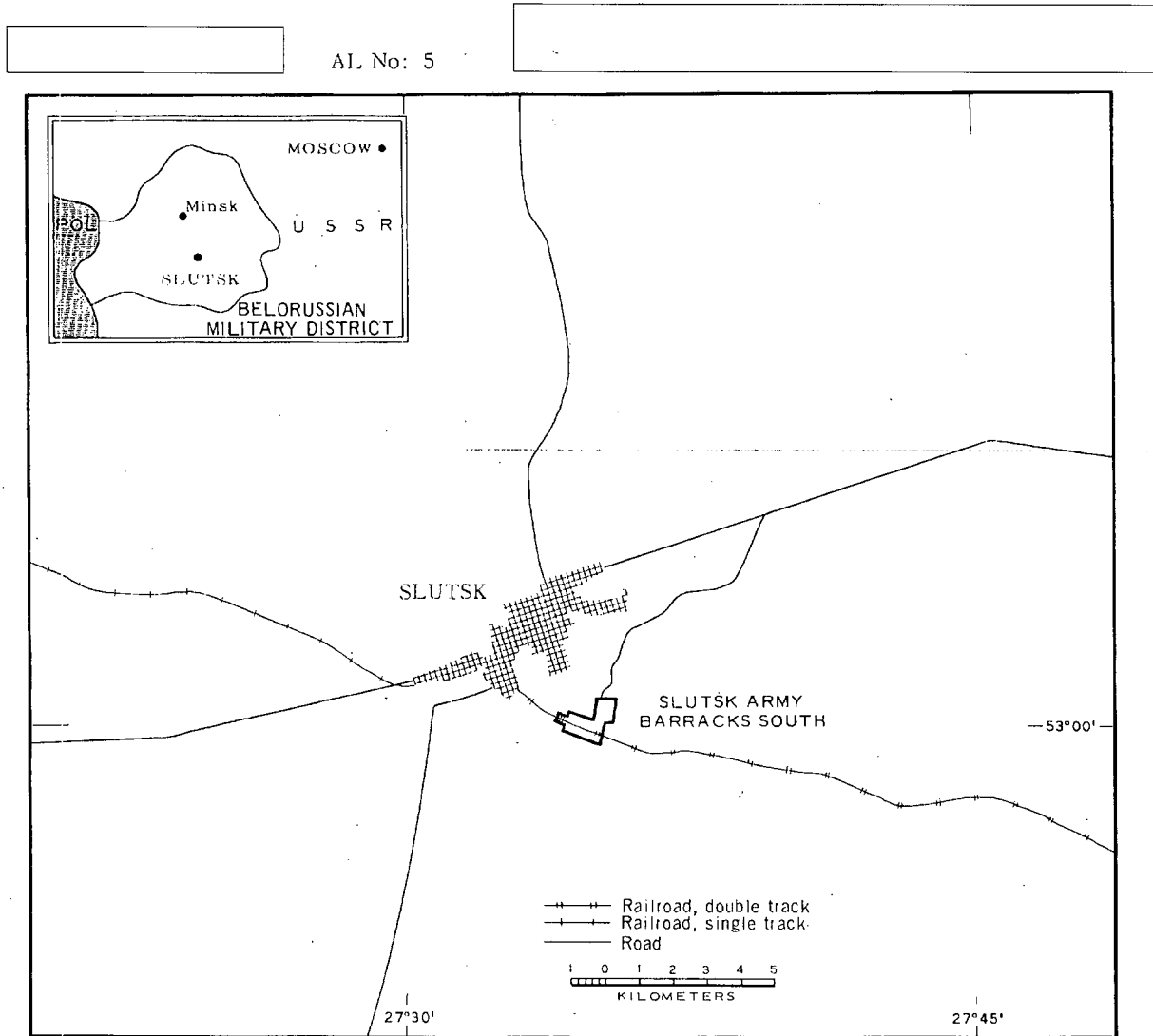


FIGURE 1. LOCATION OF SLUTSK ARMY BARRACKS SOUTH.

SUMMARY

Slutsk Army Barracks South (formerly [redacted]) is located 3 kilometers (km) south of Slutsk (53-02N 027-33E) on both sides of the Slutsk-Urechye rail line (Figure 1). The installation is served by two rail spurs and has all-weather road access to Slutsk. Four other military installations are located in the Slutsk area within a five km radius.

The installation (Figures 2 and 3) covers 720 acres and includes three multistory administration buildings, two multistory barracks/administration buildings, eight barracks, 31 storage buildings, 26 support buildings, two equipment storage/maintenance areas with eight vehicle shed/maintenance buildings, two secured

probable ammunition storage areas with eight buildings (two revetted), and an athletic field. Training facilities include a small-arms firing range and a unit training area which includes a driver training area, personnel trenches and foxholes, and an infantry assault training course.

The area is covered by 1956 TALENT photography in which poor image quality precludes detailed interpretation, and nine KEY-HOLE missions between August 1961 and December 1963. Comparative analysis reveals the same general level of usage between August 1961 and December 1963. No significant changes are observed.

DESCRIPTION OF INSTALLATION

Railroad Service

Two spurs from the double-track Slutsk-Urechye rail line serve the installation.

Road Service

An all-weather secondary road provides access to the Slutsk-Urechye highway.

Administrative and Troop Housing Areas

Area D1 contains three multistory administration buildings and two support buildings.

Area D2 contains two multistory barracks/administration buildings, eight barracks, and four support buildings.

Track activity indicates probable use of all buildings in both areas.

General Storage Areas

Area E1 is located in a secured area along with equipment storage/maintenance area J2. It contains 13 storage buildings, eight support buildings, and an open storage area. Twelve of the storage buildings are rail served. Track activity indicates probable usage of all storage buildings.

Area E2 is secured and contains 11 storage buildings and two support buildings. Six of the storage buildings are rail served. Track activity indicates probable usage of all storage buildings.

Area E3 is secured and contains four storage buildings and two support buildings. Track activity indicates light use of this area.

Area E4 is located in a secured area along with equipment storage/maintenance area J1, and contains three storage buildings and one support building. Track activity indicates moderate usage of this area.

Ammunition Storage Areas

Area F1 is secured and contains six unrevetted probable ammunition storage buildings: two are 85 by 40 feet, three are 70 by 35 feet, and one is 60 by 30 feet.

Area F2 is secured and contains two revetted ammunition storage buildings, each 60 by 45 feet.

NPIC 7R-506764

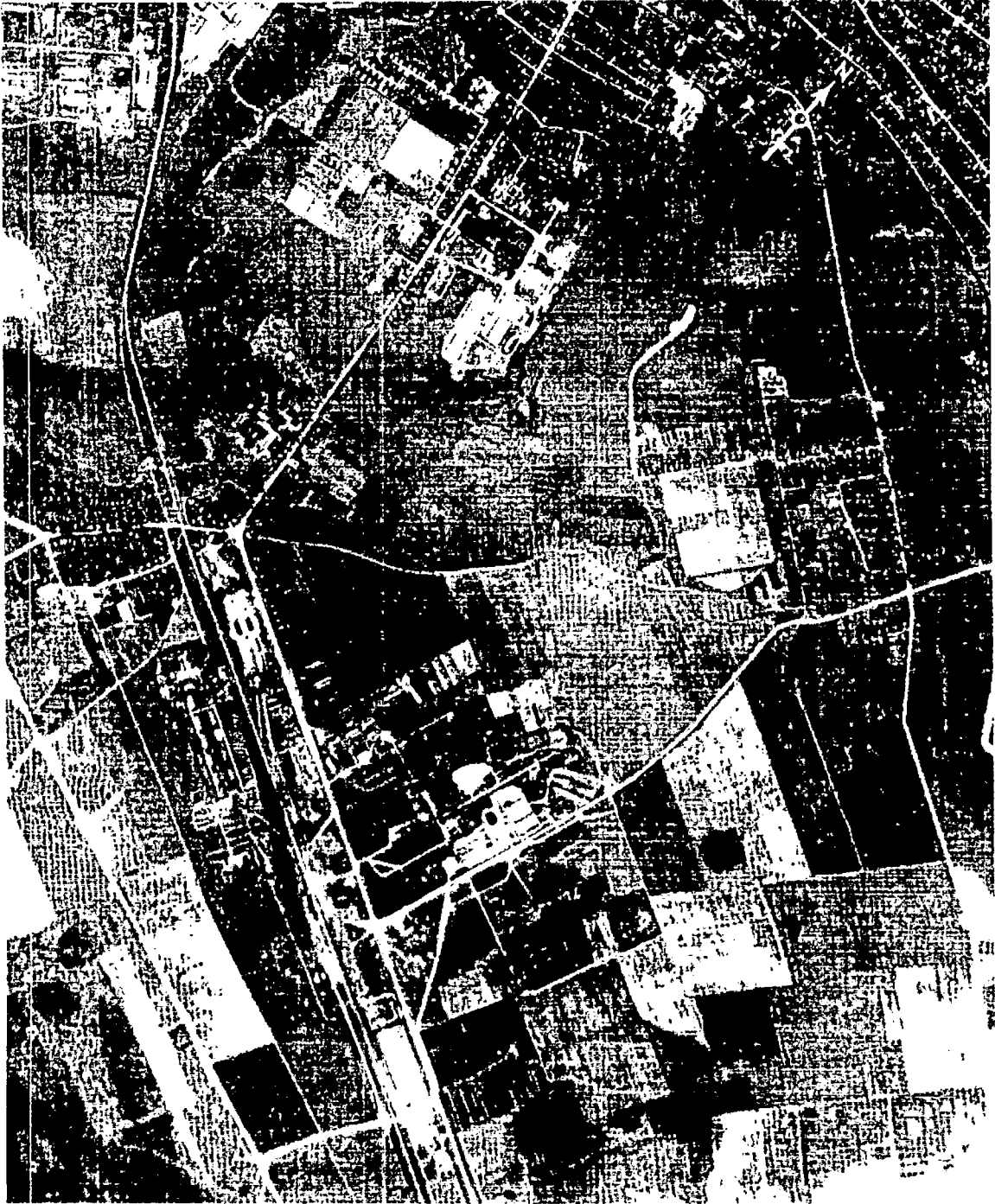


FIGURE 2. SLUTSK ARMY BARRACKS SOUTH, SLUTSK, USSR, JULY 1963.

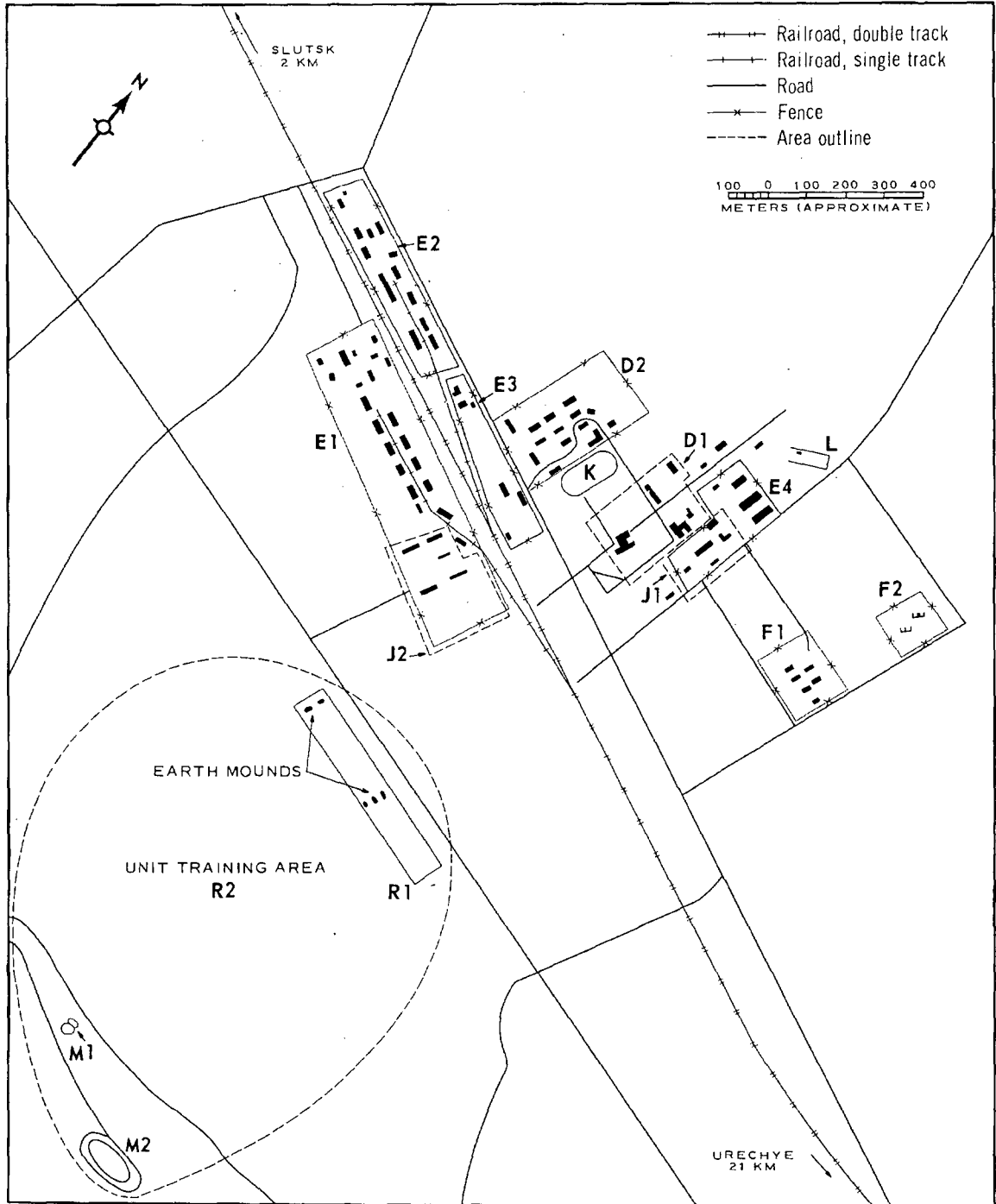


FIGURE 3. SLUTSK ARMY BARRACKS SOUTH. Sketch compiled from [redacted] December 1963.

NPIC/R-506/64

Track activity indicates light usage of both areas.

Other Buildings

Four support buildings are scattered throughout the area and one small building is located at the small-arms firing range.

Equipment Storage/Maintenance Areas

Area J1 contains one 190- by 40-foot vehicle shed, two maintenance buildings, two support buildings, and several rows of possible vehicles/equipment.

Area J2 contains four 160- by 40-foot vehicle sheds, a maintenance building, and several rows of possible vehicles/equipment.

Track activity in both areas indicates a moderate level of usage.

Athletic Field

Area K is an athletic field. Track activity indicates moderate usage.

Small Arms Firing Range

Area L is a 360- by 100-foot small-arms firing range. Track activity indicates moderate usage.

Driver Training Area

Area M1 is a figure-8 wheeled-vehicle driver training course.

Area M2 is an irregular shaped, closed-circuit, wheeled-vehicle course.

Track activity indicates moderate usage of both areas. These two areas are not depicted on Figure 2.

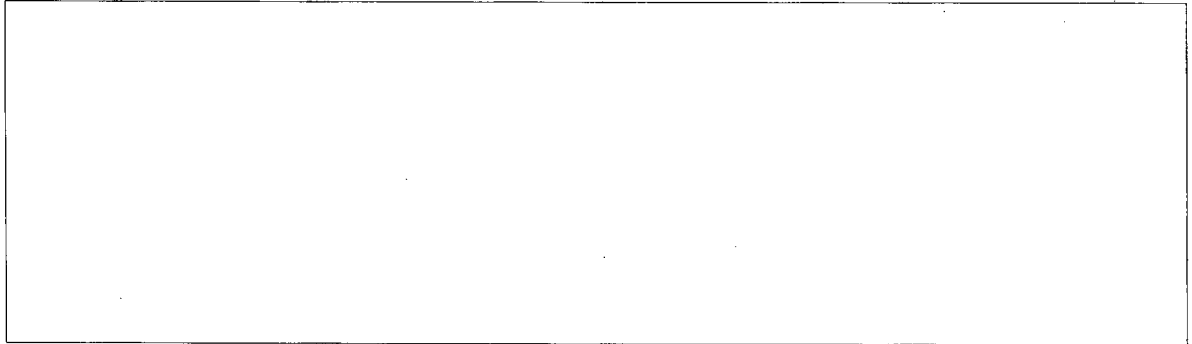
Infantry Field Training Areas

Area R1 is a possible infantry assault course.

Area R2 is an infantry unit training area. Numerous tracks, personnel trenches, and fox-holes are visible in the area.

REFERENCES

PHOTOGRAPHY



MAPS OR CHARTS

US Air Target Chart, Series 200, Sheet 0168-19HL, 2d ed, Dec 62 (SECRET)

DOCUMENTS

Army. PIB-TK-20-63, *Military Complex Slutsk, USSR*, March 63 (TOP SECRET RUFF)

DIA. PC 225/1-1-63, *Installation List, Soviet Ground Forces*, 1 Oct 63 (SECRET)

REQUIREMENT

C-RR4-81,111 (partial answer)

NPIC PROJECT

N-236/64

~~TOP SECRET~~

~~TOP SECRET~~