



PHOTOGRAPHIC INTERPRETATION REPORT

LEPEL ARMY BARRACKS
ZASLONOVO STANTSIIYA
LEPEL, USSR
BELORUSSIAN MD

APPROVED FOR
RELEASE -
HISTORICAL
COLLECTION
DIVISION HR70-14
DATE: 07-18-2012



CIA



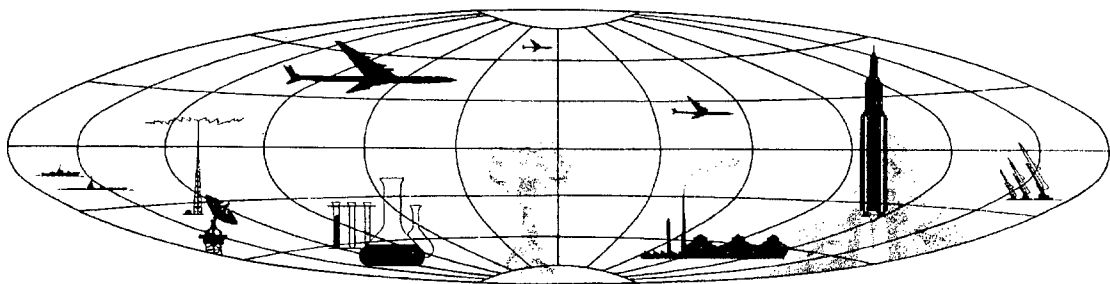
DIA

Handle Via **TALENT - KEYHOLE** Control Only

WARNING

This document contains classified information affecting the national security of the United States within the meaning of the espionage laws U. S. Code Title 18, Sections 793 and 794. The law prohibits its transmission or the revelation of its contents in any manner to an unauthorized person, as well as its use in any manner prejudicial to the safety or interest of the United States or for the benefit of any foreign government to the detriment of the United States. It is to be seen only by personnel especially indoctrinated and authorized to receive TALENT-KEYHOLE information. Its security must be maintained in accordance with KEYHOLE and TALENT regulations.

NATIONAL PHOTOGRAPHIC INTERPRETATION CENTER



PREFACE

This report is one in a series on Soviet Ground Force and logistic installations being prepared for a DIA/CIA Panel. The series is being coordinated, published and disseminated by NPIC. The photographic analysis is being performed by the NPIC Photographic Analysis Group, the CIA Photographic Intelligence Division (NPIC), and the Production Center 1P1c (DIA). The photographic analysis for this particular report was performed by the NPIC Photographic Analysis Group.

In the interest of uniformity, the titles and letter designators for the facilities observed at these installations are identical with those appearing in the project requirement. When a specific facility is not observed both its title and letter designator are omitted in the report.

Titles and letter designators for the various facilities are as follows: (A) railroad service, (B) road service, (C) landing strips, (D) administrative and troop housing areas, (E) storage areas, (F) ammunition storage areas, (G) POL storage areas, (H) other buildings and facilities, (J) equipment storage/maintenance areas, (K) athletic fields, (L) small arms firing ranges, (M) driver training areas, (N) tank/assault gun firing ranges, (P) flat trajectory firing ranges, (Q) artillery emplacements (batteries), (R) infantry or combined arms field training area or courses, (S) special training facilities, (T) unidentified facilities or tracking activity.

LEPEL ARMY BARRACKS ZASLONOVO STANTSIIYA

(54.53N 028.55E)

LEPEL, VITEBSKAYA OBLAST, USSR

BELORUSSIAN MD

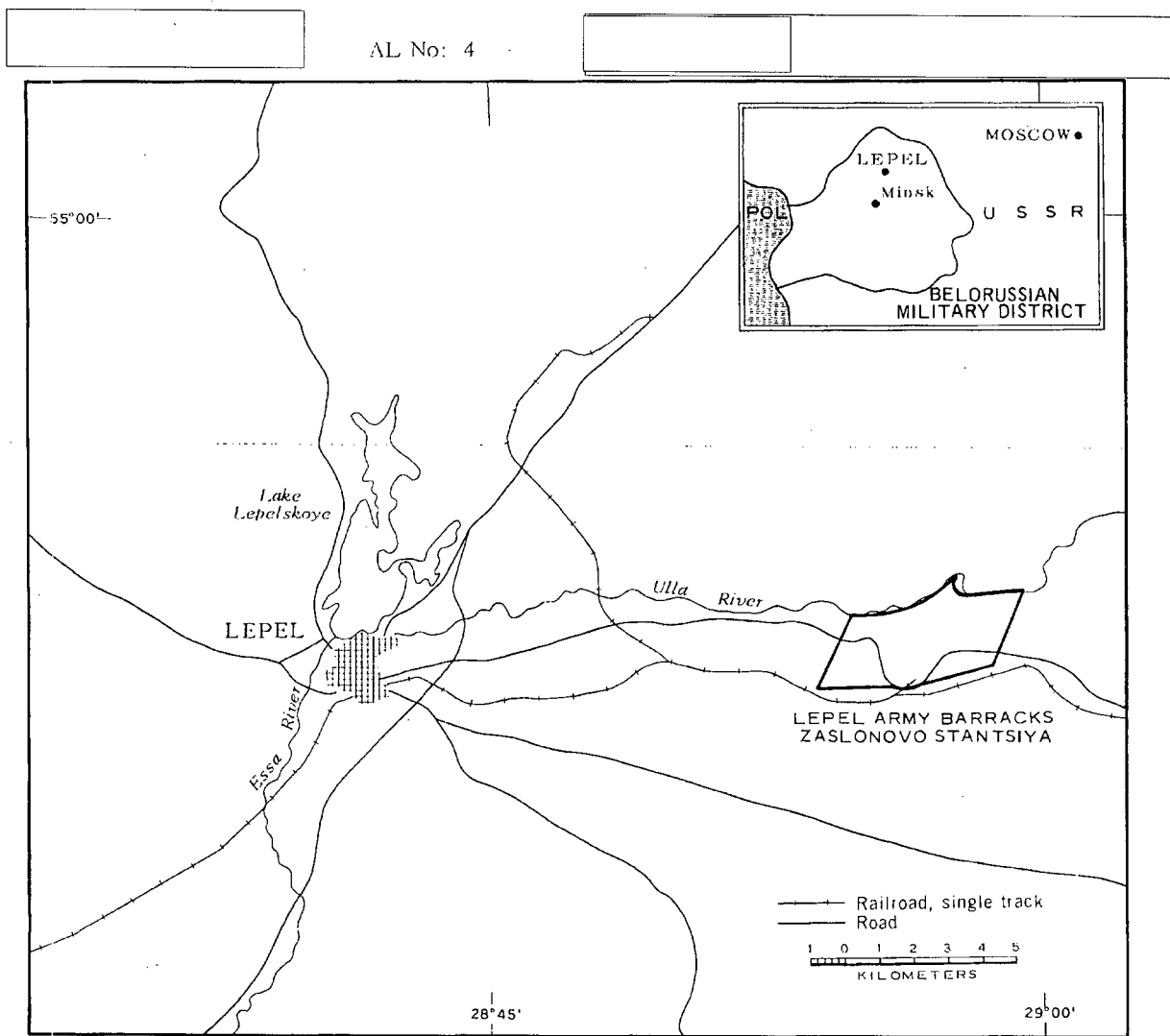


FIGURE 1. LOCATION OF LEPEL ARMY BARRACKS ZASLONOVO STANTSIIYA.

SUMMARY

Lepel Army Barracks Zaslono Stantsiya is located 15.2 kilometers (km) east of Lepel (54-53N 028-42E) between the Lepel-Orsha rail line and the Ulla River (Figure 1). This installation is served by a spur from the rail line and a good all-weather road from Lepel. An associated military training area (TA-1) is immediately north of this installation across the Ulla River. A separate report will be published on the associated training area (TA-1). Other military installations in the Lepel area include the Lepel Army Barracks Northeast (AL-5) located 13.6 km west-northwest and the Lepel Army Barracks and Headquarters Unidentified Guards Tank Division and Storage Area (AL-3), 11.6 km northwest.

The installation (Figures 2 and 3) covers approximately 1,825 acres and contains seven administrative buildings, 19 barracks, 44 storage buildings, 67 support buildings, and 23 equipment storage/maintenance buildings with four probable associated motor parks. Training facilities within this installation include three small arms firing ranges, an athletic field, and a probable tracked-vehicle, driver-training course.

Comparative analysis of six KEYHOLE missions between February 1962 and February 1964 reveals the same general level of usage over this period, with reduced track activity during the winter months. No significant changes were observed.

DESCRIPTION OF INSTALLATION

Railroad Service

A spur from the Lepel-Orsha rail line serves this area. No trackside or rail-end loading docks are discernible on this small-scale photography.

Road Service

The area is served by good all-weather roads from Lepel and Chashniki (54-52N 029-10E).

Administrative and Troop Housing Areas

Area D1 (Figure 3) contains two administrative buildings and six barracks. Area D2 contains one administrative building and two barracks. Area D3 contains two administrative buildings, four barracks, and two support buildings. Area D4 contains one administrative building and two barracks. Area D5 contains three barracks. Area D6 contains one administrative building and two barracks.

All areas appear very active.

General Storage Areas

Area E1 contains nine storage buildings and four support buildings.

Area E2 is secured and contains one large storage building and one support building. Area E3 contains four storage buildings. Area E4 contains 10 storage buildings and four support buildings. Area E5 contains six storage buildings. Area E6 contains two storage buildings. Area E7 contains four storage buildings. Eight storage buildings are scattered throughout the installation. All storage areas are active and appear to be in use.

Other Buildings

There are 51 support buildings scattered throughout the barracks area.

Equipment Storage/Maintenance Areas

Area J1 contains two 305- by 60-foot vehicle storage/maintenance buildings, one 280- by 70-foot vehicle storage/maintenance building, three 160- by 50-foot vehicle storage mainte-

~~TOP SECRET RUFF~~

Handle Via
TALENT-KEYHOLE
Control System Only

TCS-7236/64
NPIC/R-513/64

nance buildings, two support buildings, and two vehicle parks measuring 320 by 210 feet and 420 by 210 feet.

Area J2 contains five 250- by 55-foot vehicle storage/maintenance buildings, two 180- by 55-foot vehicle storage/maintenance buildings, two support buildings, and a 315- by 210-foot probable vehicle park.

Area J3 contains seven 310- by 65-foot vehicle storage/maintenance buildings, one support building, and a 425- by 210-foot probable vehicle park.

Area J4 contains one 165- by 60-foot vehicle storage/maintenance building and two 150- by 55-foot vehicle storage/maintenance buildings.

The first three areas are secured and contained unidentified objects, possibly vehicles,

on February 1964 coverage. All areas appear to be consistently active on all available coverage.

Athletic Field

Area K is an athletic field.

Small Arms Firing Range

There are three small arms ranges: L1 is 860 by 90 feet, L2 is 330 by 60 feet, and L3 is 550 by 110 feet. These ranges appear active on all coverage.

Driver Training Area

Area M is a 1,650- by 500-foot probable tracked-vehicle, driver-training course. It appears active on all coverage except that of February 1962 and February 1964, which is snow covered.

~~TOP SECRET RUFF~~

Handle Via
TALENT-KEYHOLE
Control System Only

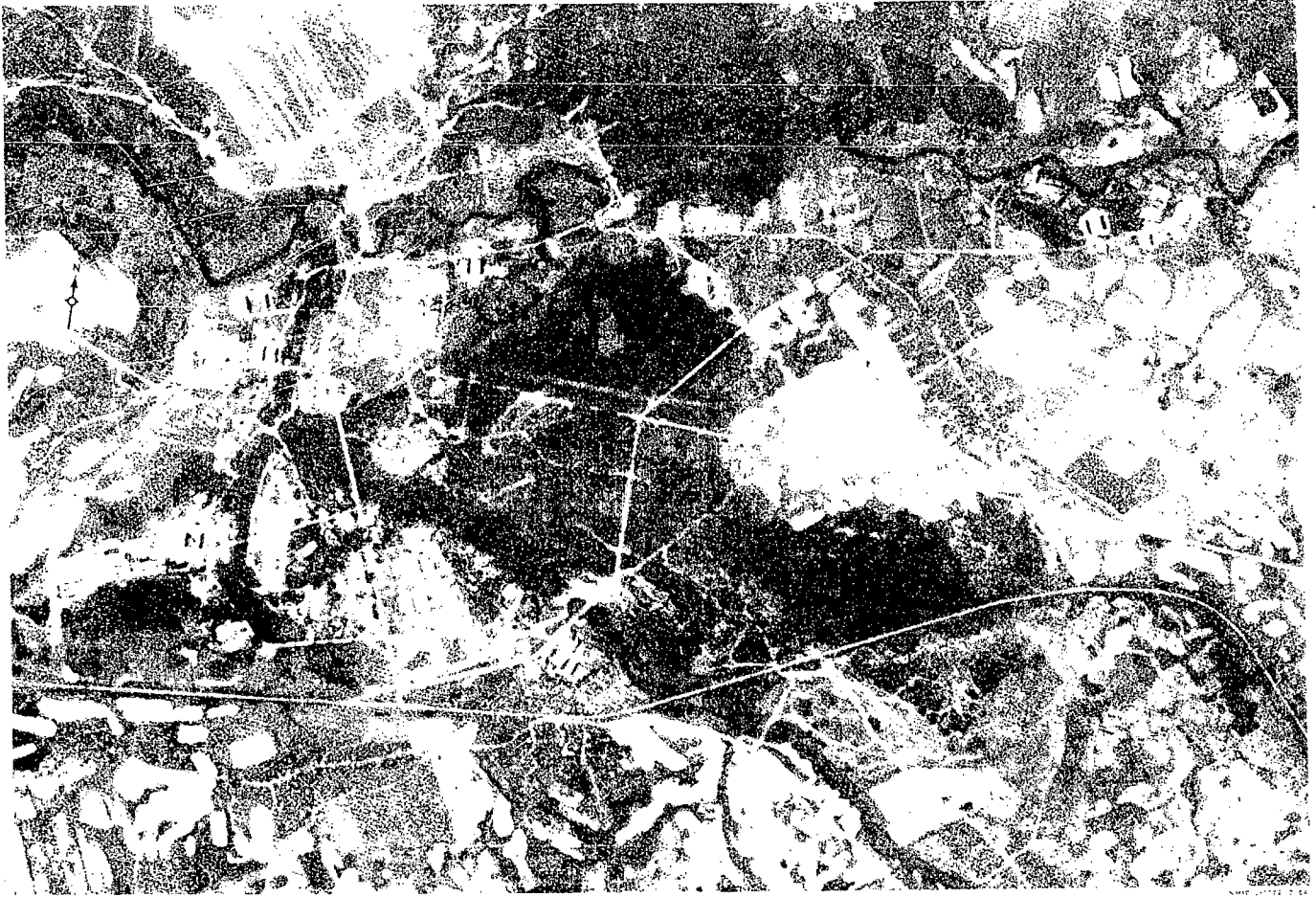


FIGURE 2. LEPEL ARMY BARRACKS ZASLONOVO STANTSIYA, LEPEL, USSR, AUGUST 1963.

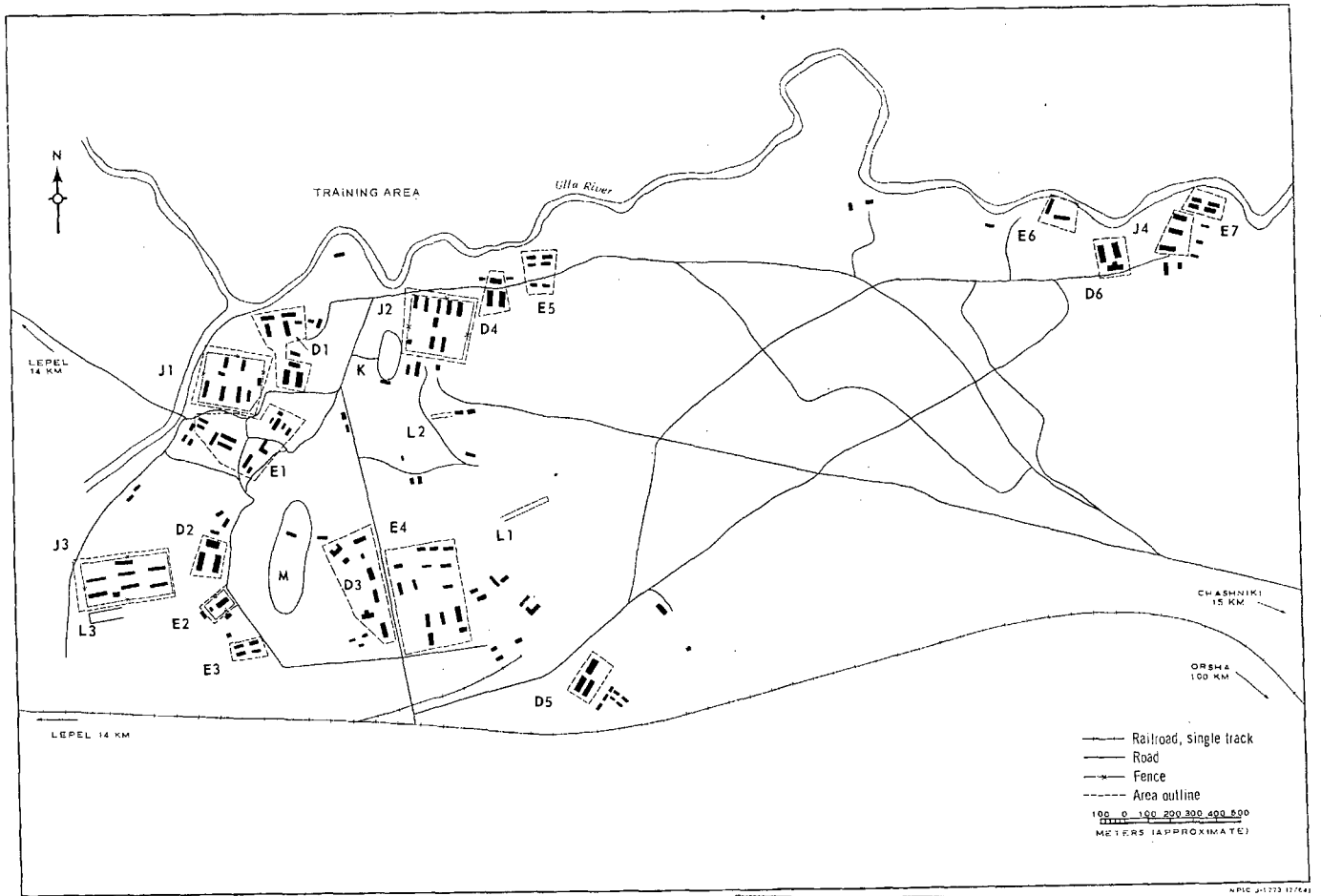


FIGURE 3. LEPEL ARMY BARRACKS ZASLONOVO STANTSIYA. Sketch compiled from [] August 1963, [] February 1964.

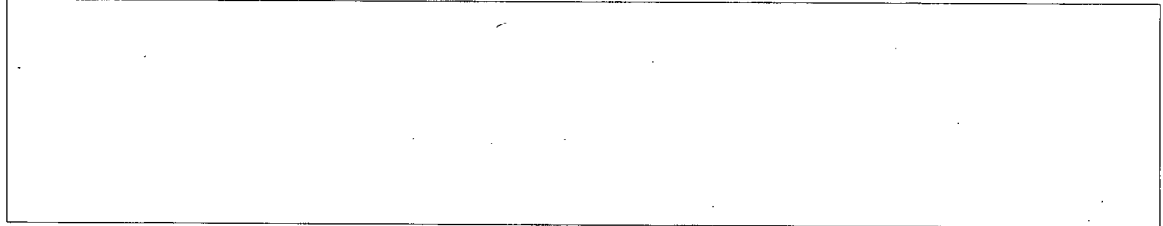
WPIC 24-573 12744

Handle Via
TALENT-KEYHOLE
Control System Only

TCS-7236/64
NPIC/R-513/64

REFERENCES

PHOTOGRAPHY



MAPS OR CHARTS

US Air Target Chart, Series 200, Sheet 0168-101L. 2d ed, Oct 62 (SECRET)

DOCUMENTS

Army. PIB-TK-98-62, *Lepel Military Area, Lepel, USSR*, 27 Jul 62 (TOP SECRET RUFF)

DIA. PC 225-1-1-63, *Installation List, Soviet Ground Forces*, 1 Oct 63 (SECRET)

DIA. PC 225-1-2-63, *Training Areas, Soviet Ground Forces*, 1 Oct 63 (SECRET)

REQUIREMENT

C-RR4-81,111 (partial answer)

NPIC PROJECT

N-236/64

Handle Via
TALENT-KEYHOLE
Control System Only

~~TOP SECRET~~

~~TOP SECRET~~