

July 1964

~~TOP SECRET~~

Copy 1

9 Pages

PHOTOGRAPHIC INTERPRETATION REPORT

# MARINA GORKA ARMY BARRACKS AND DEPOT MARINA GORKA, USSR BELORUSSIAN MD

APPROVED FOR  
RELEASE -  
HISTORICAL  
COLLECTION  
DIVISION  
HR70-14 DATE:  
07-18-2012



CIA



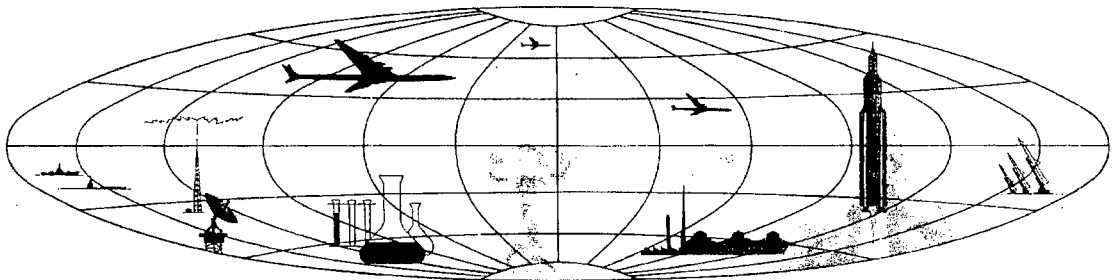
DIA

Handle Via **TALENT - KEYHOLE** Control Only

WARNING

This document contains classified information affecting the national security of the United States within the meaning of the espionage laws U. S. Code Title 18, Sections 793 and 794. The law prohibits its transmission or the revelation of its contents in any manner to an unauthorized person, as well as its use in any manner prejudicial to the safety or interest of the United States or for the benefit of any foreign government to the detriment of the United States. It is to be seen only by personnel especially indoctrinated and authorized to receive TALENT-KEYHOLE information. Its security must be maintained in accordance with KEYHOLE and TALENT regulations.

NATIONAL PHOTOGRAPHIC INTERPRETATION CENTER



~~TOP SECRET~~

GROUP 1  
Excluded from automatic  
downgrading and declassification

PREFACE

This report is one in a series on Soviet Ground Force and logistic installations being prepared for a DIA/CIA Panel. The series is being coordinated, published and disseminated by NPIC. The photographic analysis is being performed by the NPIC Photographic Analysis Group, the CIA Photographic Intelligence Division (NPIC), and the Production Center IPIC (DIA). The photographic analysis for this particular report was performed by the NPIC Photographic Analysis Group.

In the interest of uniformity, the titles and letter designators for the facilities observed at these installations are identical with those appearing in the project requirement. When a specific facility is not observed both its title and letter designator are omitted in the report.

Titles and letter designators for the various facilities are as follows: (A) railroad service, (B) road service, (C) landing strips, (D) administrative and troop housing areas, (E) storage areas, (F) ammunition storage areas, (G) POL storage areas, (H) other buildings and facilities, (J) equipment storage/maintenance areas, (K) athletic fields, (L) small arms firing ranges, (M) driver training areas, (N) tank/assault gun firing ranges, (P) flat trajectory firing ranges, (Q) artillery emplacements (batteries), (R) infantry or combined arms field training area or courses, (S) special training facilities, (T) unidentified facilities or tracking activity.

MARINA GORKA ARMY BARRACKS AND DEPOT

(53-30N 028-10E)

MARINA GORKA, MINSKAYA OBLAST, USSR

BELORUSSIAN MD

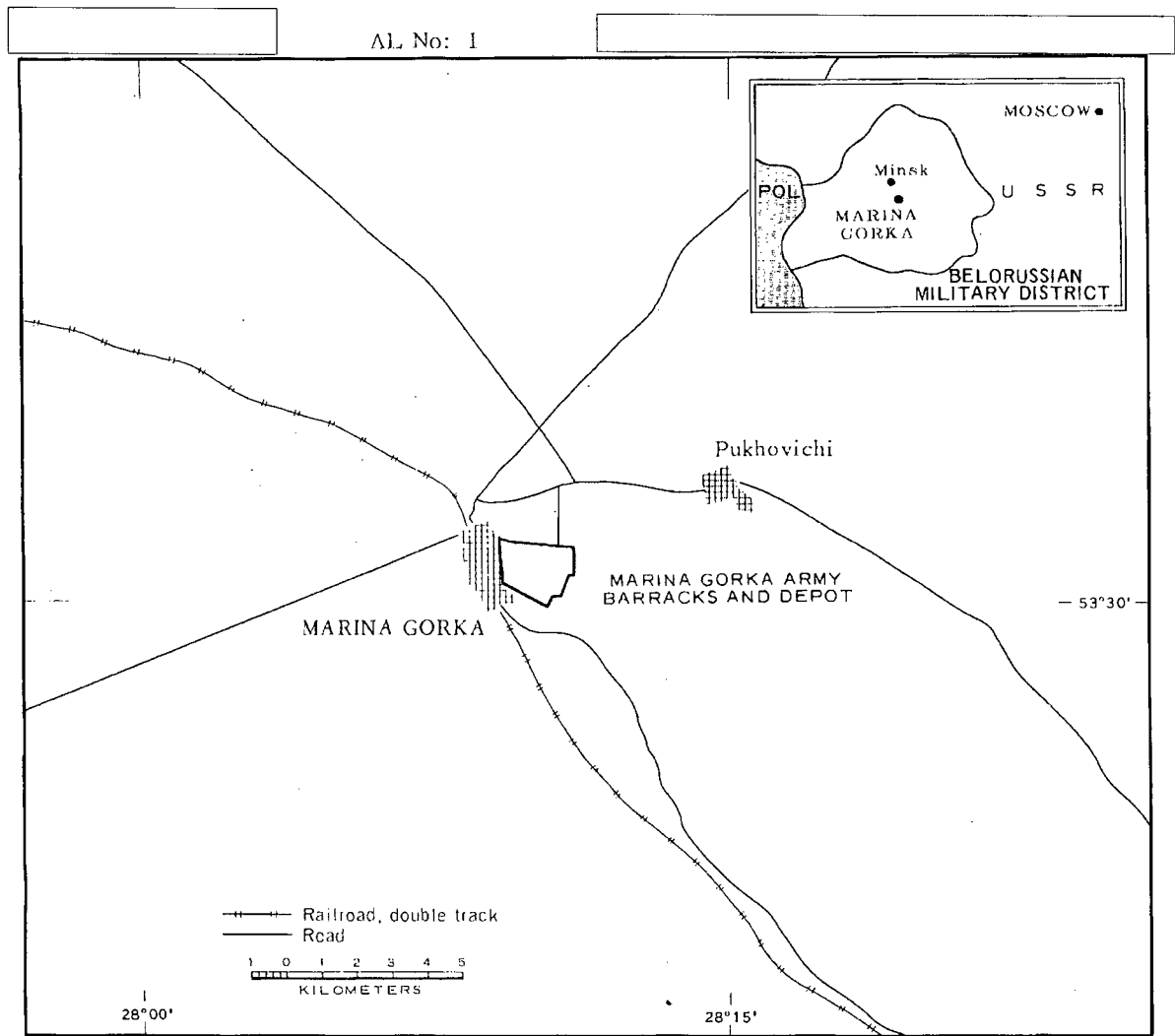


FIGURE 1. LOCATION OF MARINA GORKA ARMY BARRACKS AND DEPOT.

**SUMMARY**

Marina Gorka Army Barracks and Depot (formerly [redacted]) is located on the east side of Marina Gorka (53-30N 028-10E) (Figure 1). A spur from the Marina Gorka-Osipovichi rail line serves the installation, and a primary road provides access to Marina Gorka. A military training area (TA-1) is located immediately north and east, and a moving-target tank firing range (TA-2) is located 4 kilometers (km) southwest.

The installation (Figures 2 and 3) covers approximately 420 acres and includes seven administrative buildings, 19 support buildings, 18 multistory barracks, 20 dependents quarters, 23 storage buildings, 24 vehicle/equipment

maintenance buildings, one possible vehicle shed, and three unidentified buildings.

Other facilities include an athletic field, three small arms firing ranges, a possible POL storage area, and a secured area containing two unidentified objects.

The area was covered by 1956 TALENT photography and 12 KEYHOLE missions between August 1961 and February 1964. Comparative analysis reveals the same general level of usage. The only significant change is the completion by February 1962 of eight barracks which were observed under construction in 1956.

**DESCRIPTION OF INSTALLATION**

**Railroad Service**

A single-track spur from the Marina Gorka-Osipovichi rail line provides service to a possible POL storage area.

**Road Service**

An all-weather road provides access to Marina Gorka.

**Administrative and Troop Housing Areas**

Area D1 (Figure 3) contains five administration buildings and 10 multistory barracks. Summer coverage indicates heavy activity with a marked decrease of activity in the winter.

Area D2 contains two administrative buildings.

Area D3 contains eight multistory barracks and 13 support buildings. This area was observed under construction in 1956 and was completed by the spring of 1962.

**General Storage Area**

Area E1 contains 13 storage buildings, three

added between 1956 and the spring of 1962.

Area E2, secured, contains two storage buildings. One building was removed between 1956 and the spring of 1962.

Area E3, secured, contains four storage buildings, and Area E4, also secured, contains four storage buildings.

**POL Storage Area**

Area G is a possible POL storage area; however, poor photo quality precludes description.

**Other Buildings**

Area H1 contains two L-shaped buildings and one rectangular building of undetermined function. They were first observed on [redacted] March 1962.

Area H2 contains 20 dependents quarters.

Area H3, secured, contains two objects, unidentified due to the small scale and quality of photography.

Handle Via  
TALENT-KEYHOLE  
Control System Only

TCS-7258/64  
NPIC/R-527/64

**Equipment Storage/Maintenance Areas**

Area J1 contains six 250- by 60-foot maintenance buildings and one possible 165- by 65-foot vehicle shed. Their function was determined from 1956 TALENT photography.

Area J2 contains one 290- by 35-foot maintenance building, one 210- by 35-foot maintenance building, two 180- by 60-foot maintenance buildings, fourteen 250- by 60-foot maintenance buildings, and two 165- by 65-foot support buildings. Identification is based on the pattern established from 1956 TALENT photography.

Track activity in the areas indicates all buildings are utilized.

**Athletic Field**

Area K is an athletic oval 400 feet long and 250 feet wide.

**Small Arms Firing Ranges**

Areas L1 through L3 are 450- by 95-foot small arms firing ranges. Four support buildings are in these areas. Six firing ranges were revealed on 1956 TALENT photography; however, only three ranges can be confirmed on KEYHOLE photography.

Handle Via  
TALENT-KEYHOLE  
Control System Only

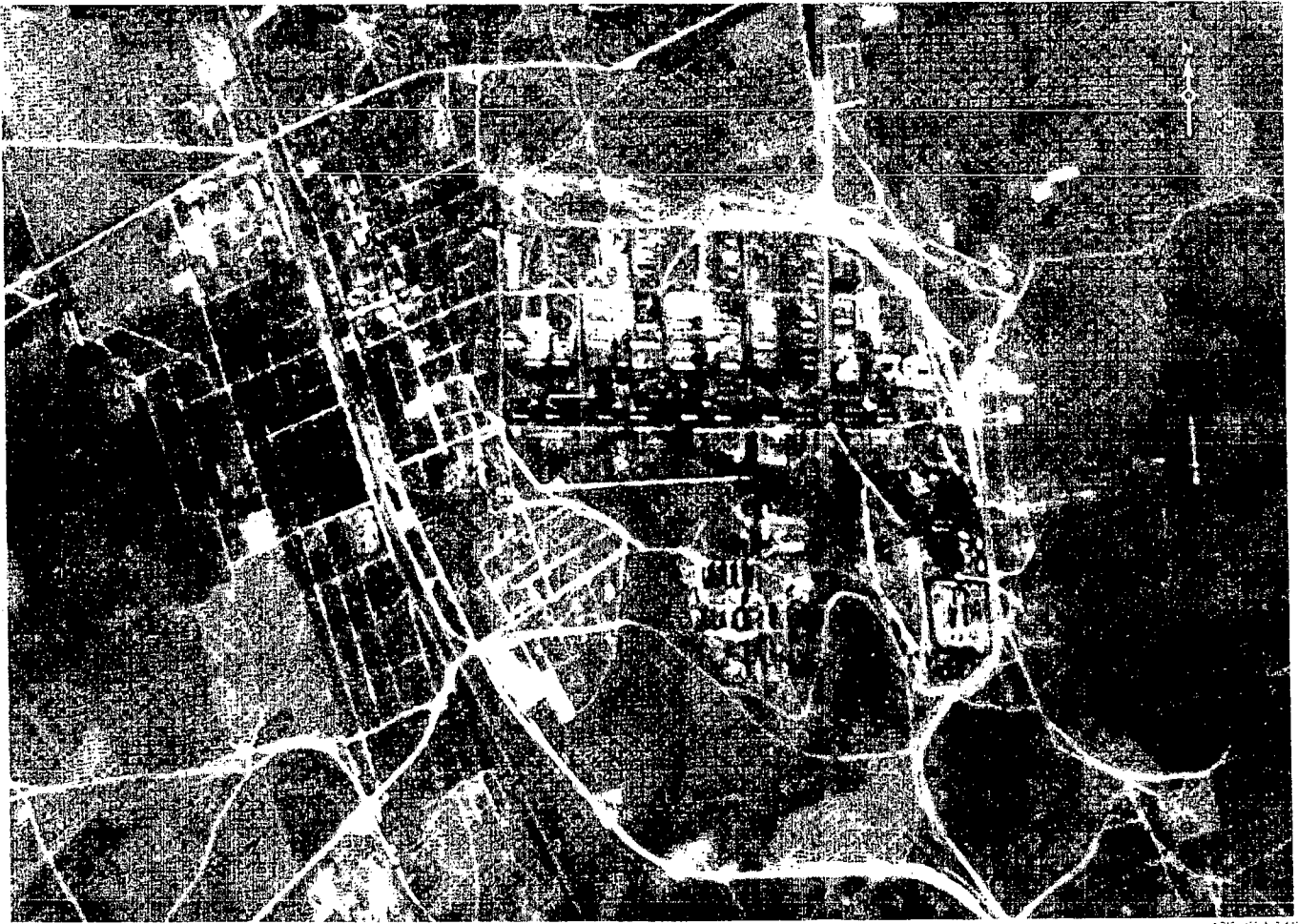


FIGURE 2. MARINA GORKA ARMY BARRACKS AND DEPOT, MARINA GORKA, USSR AUGUST 1963.

SP-10-103-4-7-144

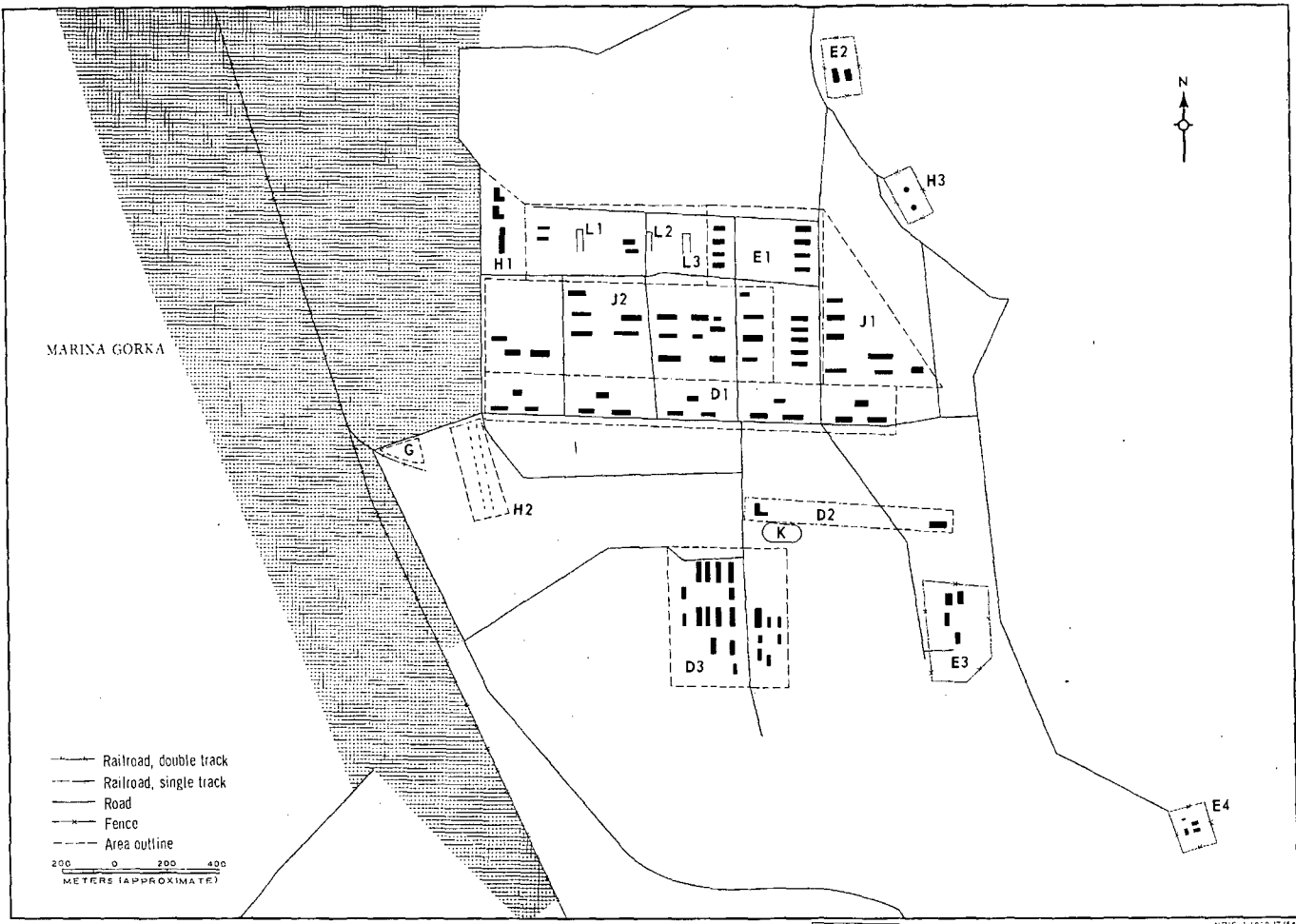


FIGURE 3. MARINA GORKA ARMY BARRACKS AND DEPOT. Sketch compiled from [redacted] August 1963.

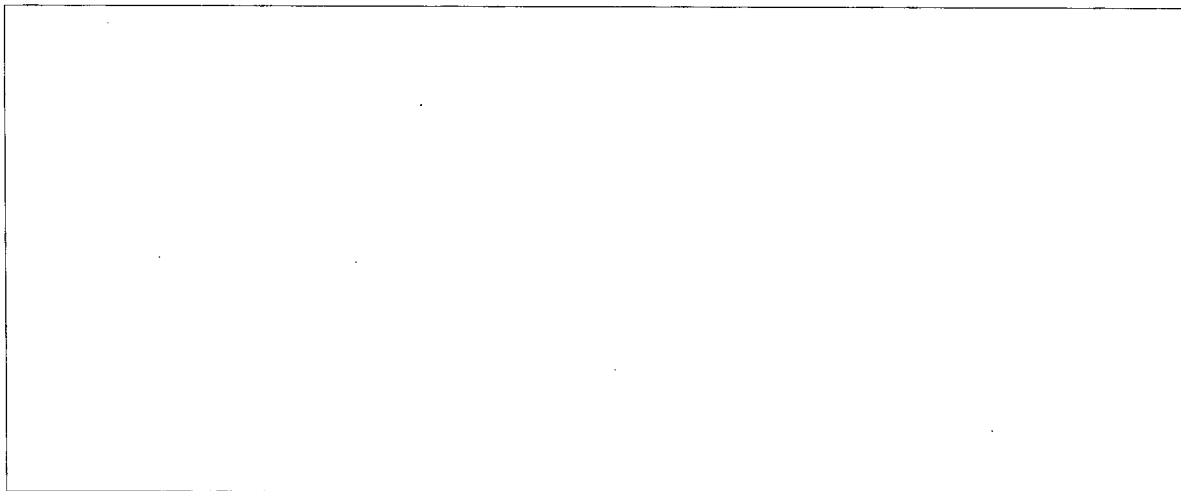
WVIC 3-1529 12/64

Handle Via  
TALENT-KEYHOLE  
Control System Only

TCS-7258/64  
NPIC/R-527/64

REFERENCES

PHOTOGRAPHY



MAPS OR CHARTS

US Air Target Chart, Series 200, Sheet 0168-19HL, 2d ed, Dec 62 (SECRET)

US Air Target Chart, Series 0168-20HL, 2d ed, Oct 62 (SECRET)

DOCUMENTS

Army. PUB-TK-114-62, *Marina Gorka Army Barracks & Depot*, Mar 63 (TOP SECRET RUFF)

Army. PIB-12-58, *Military Installation & Training Area Vicinity Marina Gorka*, Dec 58 (TOP SECRET CHESS)

DIA. PC 225 '1-1-63, *Installation List, Soviet Ground Forces*, 1 Oct 63 (SECRET) [redacted]

DIA. PC 225 '1-2-63, *Training Areas, Soviet Ground Forces*, 1 Oct 63 (SECRET) [redacted]

REQUIREMENT

C-RR4-S1,111 (partial answer)

NPIC PROJECT

N-236 '64

Handle Via  
TALENT-KEYHOLE  
Control System Only



~~TOP SECRET~~

~~TOP SECRET~~