

PHOTOGRAPHIC INTERPRETATION REPORT

POL STORAGE AREA  
VOLKOVYSK, USSR  
BELORUSSIAN MD

APPROVED FOR  
RELEASE -  
HISTORICAL  
COLLECTION  
DIVISION HR70-14  
DATE: 07-18-2012



CIA



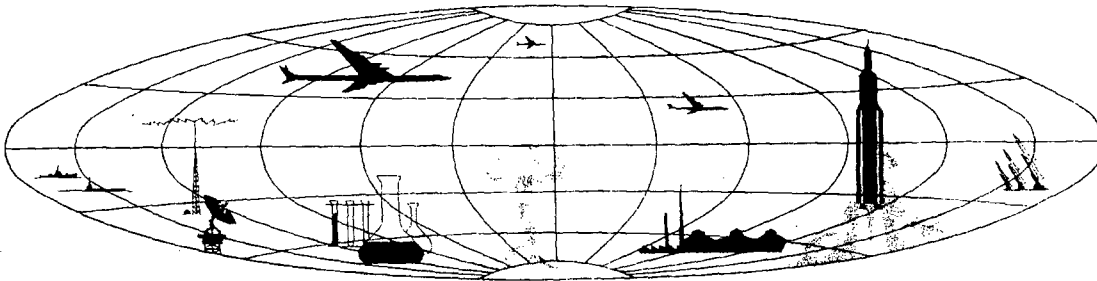
DIA

Handle Via **TALENT - KEYHOLE** Control Only

WARNING

This document contains classified information affecting the national security of the United States within the meaning of the espionage laws U. S. Code Title 18, Sections 793 and 794. The law prohibits its transmission or the revelation of its contents in any manner to an unauthorized person, as well as its use in any manner prejudicial to the safety or interest of the United States or for the benefit of any foreign government to the detriment of the United States. It is to be seen only by personnel especially indoctrinated and authorized to receive TALENT-KEYHOLE information. Its security must be maintained in accordance with KEYHOLE and TALENT regulations.

NATIONAL PHOTOGRAPHIC INTERPRETATION CENTER



**PREFACE**

This report is one in a series on Soviet Ground Force and logistic installations being prepared for a DIA/CIA Panel. The series is being coordinated, published and disseminated by NPIC. The photographic analysis is being performed by the NPIC Photographic Analysis Group, the CIA Photographic Intelligence Division (NPIC), and the Production Center 1P1c (DIA). The photographic analysis for this particular report was performed by the NPIC Photographic Analysis Group.

In the interest of uniformity, the titles and letter designators for the facilities observed at these installations are identical with those appearing in the project requirement. When a specific facility is not observed both its title and letter designator are omitted in the report.

Titles and letter designators for the various facilities are as follows: (A) railroad service, (B) road service, (C) landing strips, (D) administrative and troop housing areas, (E) storage areas, (F) ammunition storage areas, (G) POL storage areas, (H) other buildings and facilities, (J) equipment storage/maintenance areas, (K) athletic fields, (L) small arms firing ranges, (M) driver training areas, (N) tank/assault gun firing ranges, (P) flat trajectory firing ranges, (Q) artillery emplacements (batteries), (R) infantry or combined arms field training area or courses, (S) special training facilities, (T) unidentified facilities or tracking activity.

NPIC/R-410/64

POL STORAGE AREA  
(53-07N 024-24E)  
VOLKOVYSK, GRODNENSKAYA OBLAST, USSR  
BELORUSSIAN MD

BE No: None

AL No: None



COMOR No: None

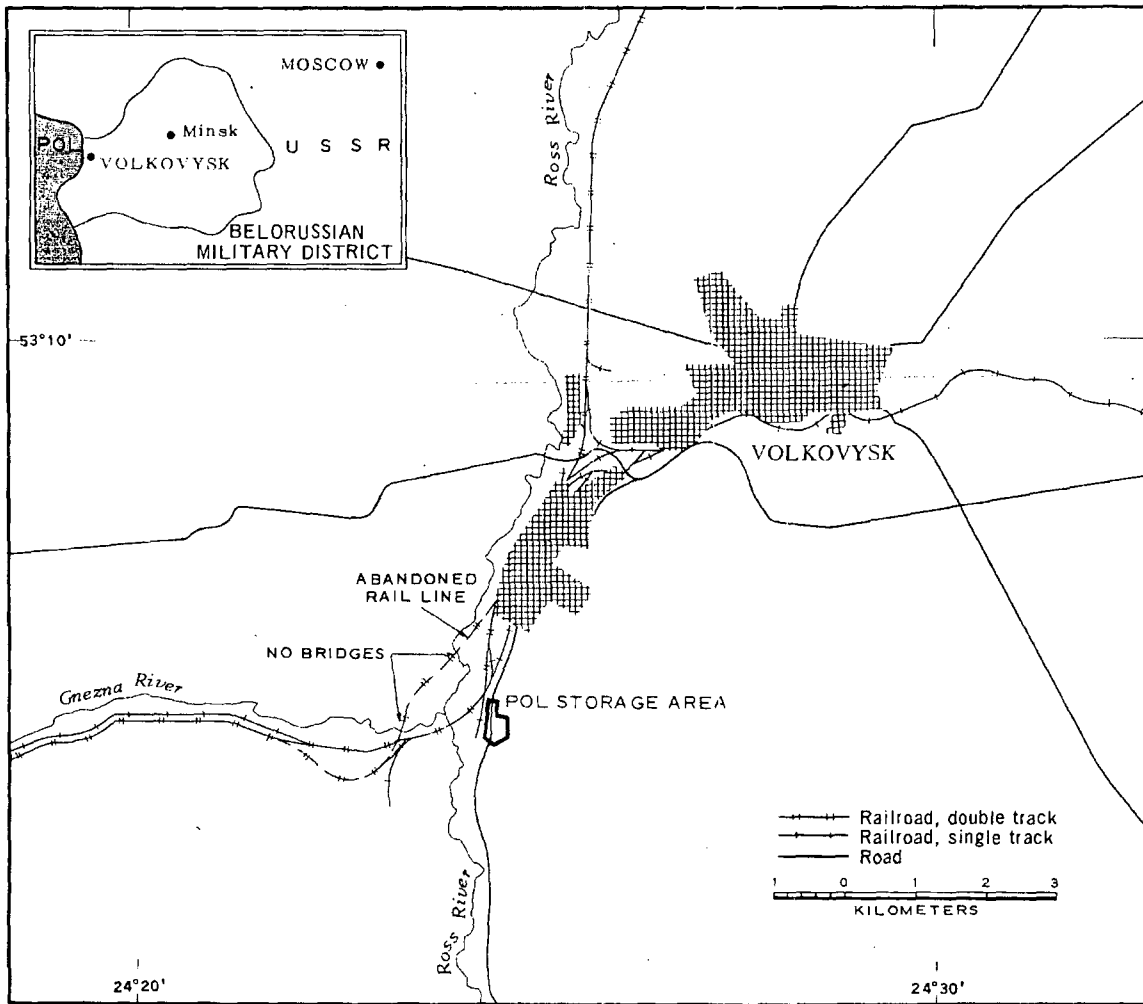


FIGURE 1. LOCATION OF POL STORAGE AREA, VOLKOVYSK, USSR.

**SUMMARY**

A POL storage area is located 6 kilometers (km) southwest of Volkovysk (53-09N 024-28E) on the east side of the Lida-Warsaw rail line (Figure 1). The location of the installation with reference to the rail line indicates that it is served by a rail spur; however, this could not be confirmed due to the small scale and marginal quality of the photography. The installation is served by an all-weather access road which connects with the Baranovichi-Bialystok highway.

The installation covers approximately 30 acres and contains 15 POL storage tanks, four storage buildings, seven support buildings, and a probable vehicle park. Immediately south of the secured area is a closed circuit figure-8 driver training course.

This area is covered by 11 KEYHOLE missions between December 1961 and February 1964. Comparative analysis revealed no change in facilities and the level of activity appears unchanged during this period.

**DESCRIPTION OF INSTALLATION**

**Railroad Service**

The installation is located on the east side of the Lida-Warsaw rail line, but service by a rail spur is undetermined.

**Road Service**

An all-weather road provides access to the Baranovichi-Bialystok Highway.

**General Storage Area**

Area E contains four storage buildings apparently in use.

**POL Storage Area**

Area G contains two vertical tanks 75 feet in diameter, five vertical tanks 35 feet in diameter, and eight vertical tanks 20 feet in dia-

meter. A rectangular excavation is also located in this area. Its function cannot be determined.

**Other Buildings**

Seven support buildings are located within the secured area.

**Equipment Storage/Maintenance Area**

Area J is a 480- by 185-foot probable vehicle park. Two rows of unidentified objects (possibly vehicles) are visible on 1963 photography.

**Driver Training Area**

Area M is a closed circuit figure-8 wheeled vehicle driver training course located just outside the secured area.

NPIC/R-410/64

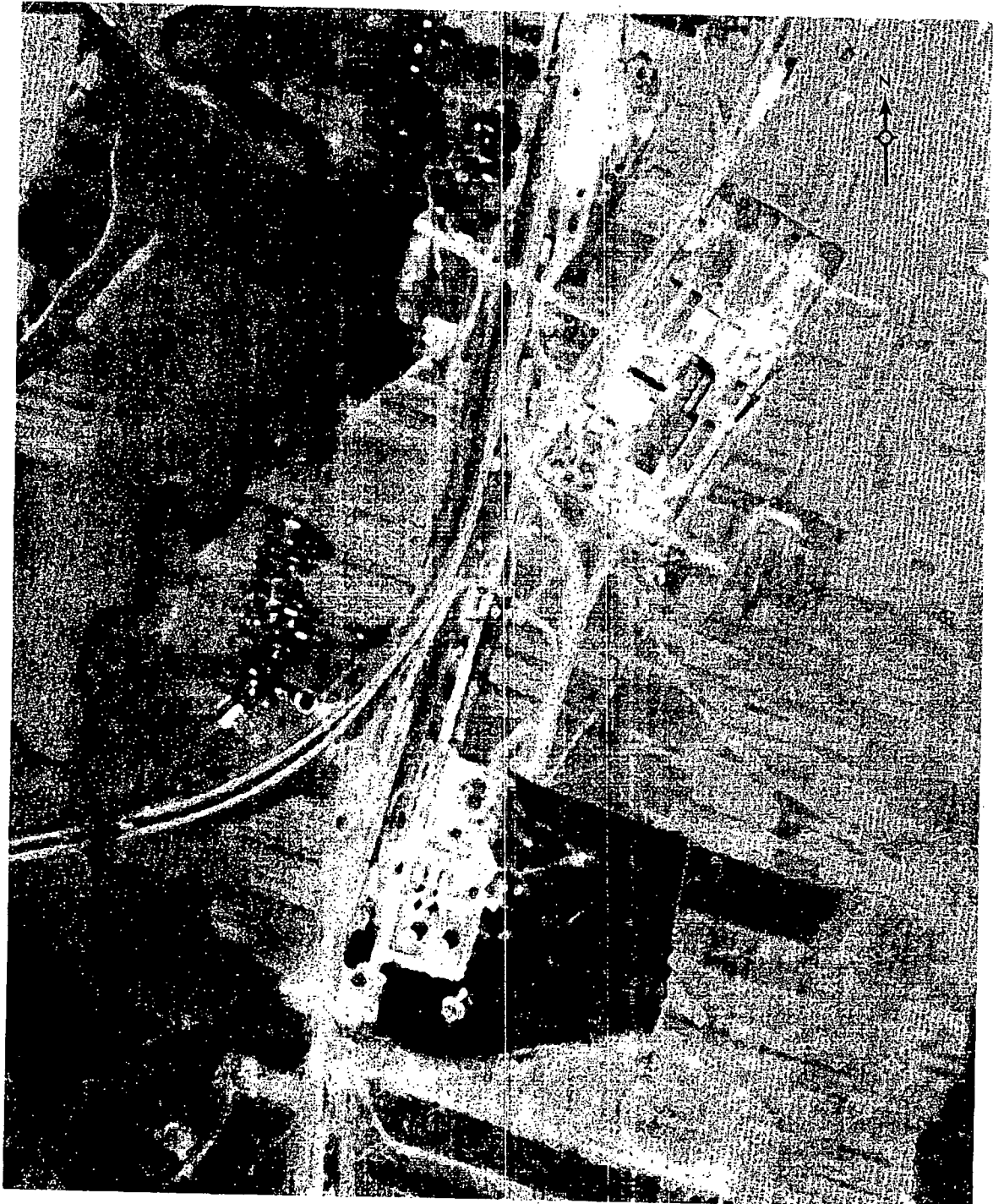


FIGURE 2. POL STORAGE AREA, VOLKOVYSK, USSR, SEPTEMBER 1963.

NPIC J-1176 (2/64)

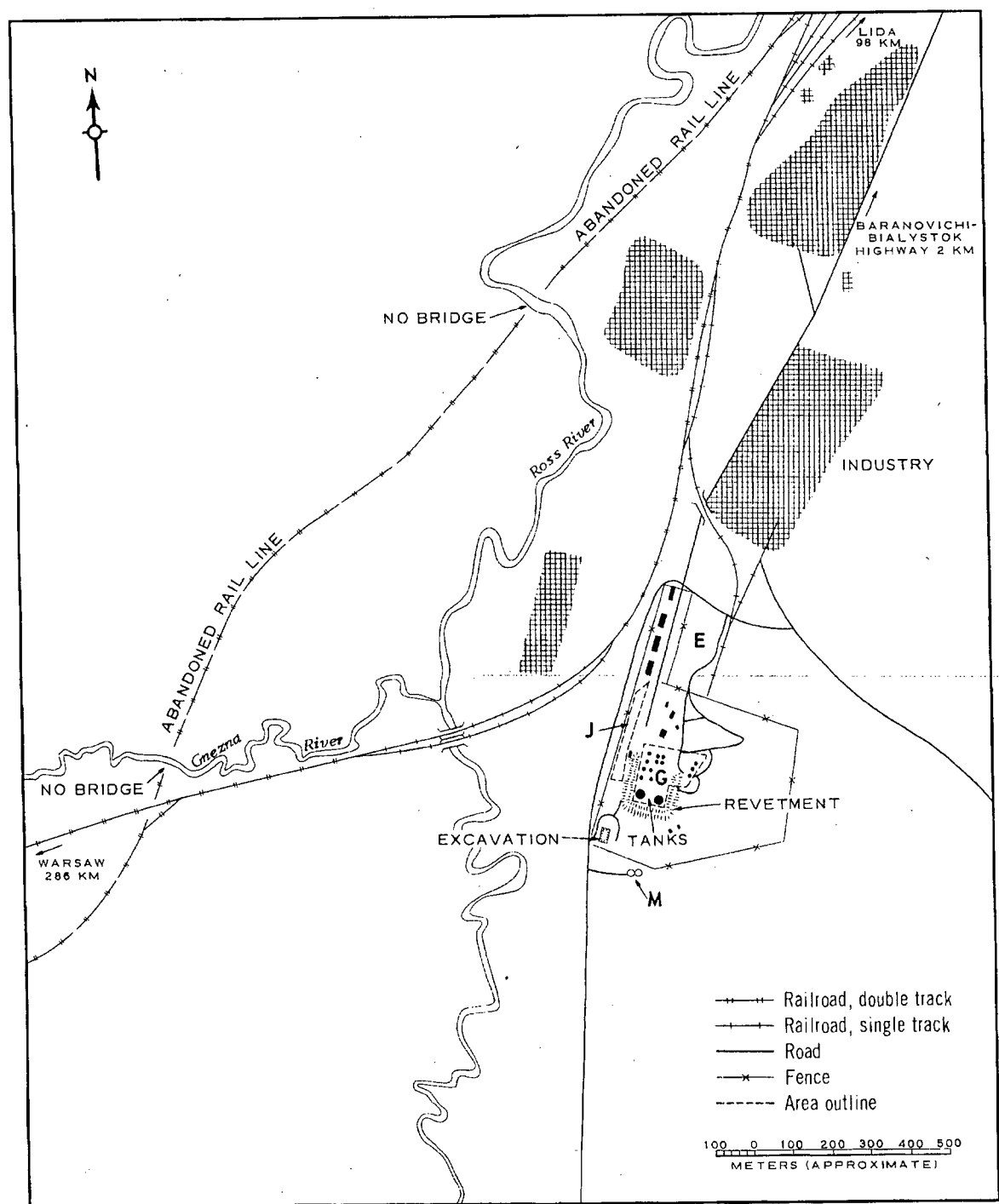
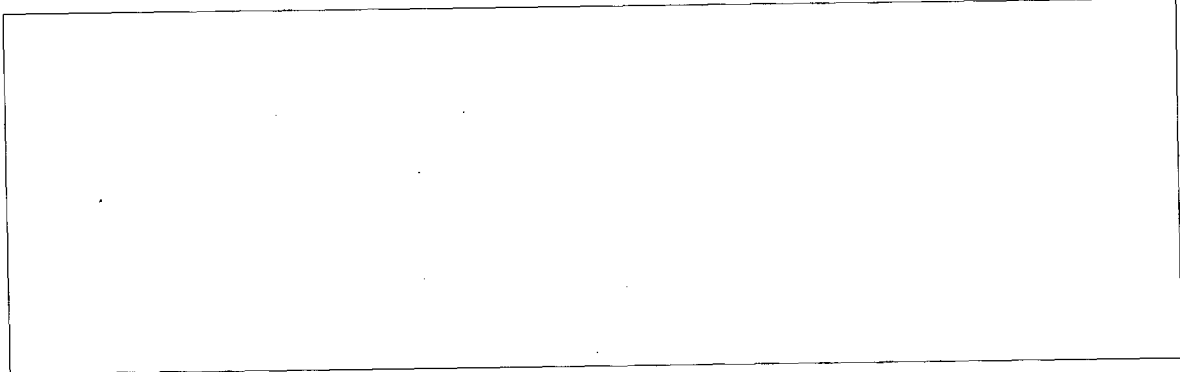


FIGURE 3. POL STORAGE AREA, VOLKOVYSK. Sketch compiled from [redacted] September 1963. NPIC J-1177 (6/64)

NPIC/R-410/64

REFERENCES

PHOTOGRAPHY



MAPS OR CHARTS

US Air Target Chart, Series 200, Sheet 0168-17HL, 2d ed, Dec 62 (SECRET)

REQUIREMENT

C-RR-4,81,111 (partial answer)

NPIC PROJECT

N-236/64

~~TOP SECRET~~

~~TOP SECRET~~