



PHOTOGRAPHIC INTERPRETATION REPORT

SLUTSK ARMY BARRACKS SOUTHWEST SLUTSK, USSR BELORUSSIAN MD

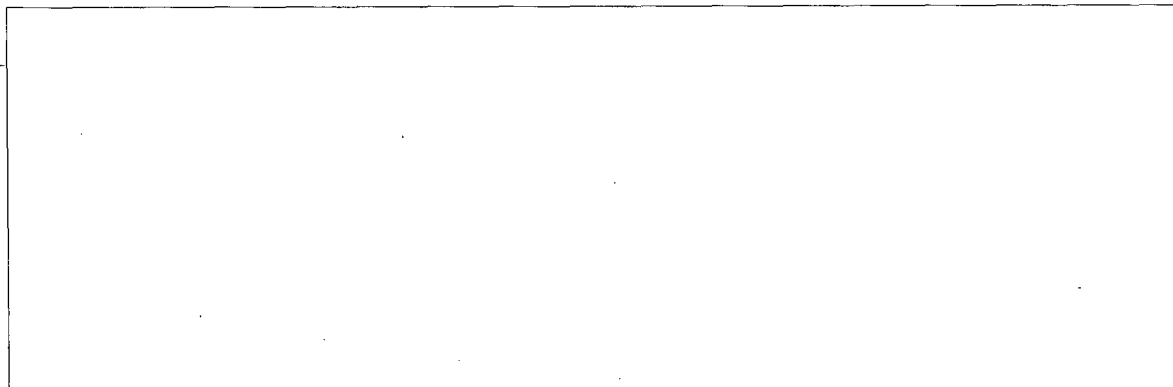
APPROVED FOR
RELEASE -
HISTORICAL
COLLECTION
DIVISION HR70-14
DATE: 07-18-2012



CIA

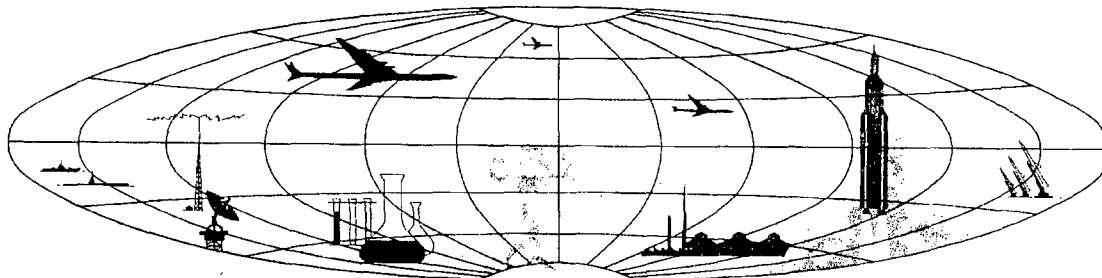


DIA



70-14

NATIONAL PHOTOGRAPHIC INTERPRETATION CENTER



PREFACE

This report is one in a series on Soviet Ground Force and logistic installations being prepared for a DIA/CIA Panel. The series is being coordinated, published and disseminated by NPIC. The photographic analysis is being performed by the NPIC Photographic Analysis Group, the CIA Photographic Intelligence Division (NPIC), and the Production Center 1P1c (DIA). The photographic analysis for this particular report was performed by the NPIC Photographic Analysis Group.

In the interest of uniformity, the titles and letter designators for the facilities observed at these installations are identical with those appearing in the project requirement. When a specific facility is not observed both its title and letter designator are omitted in the report.

Titles and letter designators for the various facilities are as follows: (A) railroad service, (B) road service, (C) landing strips, (D) administrative and troop housing areas, (E) storage areas, (F) ammunition storage areas, (G) POL storage areas, (H) other buildings and facilities, (J) equipment storage/maintenance areas, (K) athletic fields, (L) small arms firing ranges, (M) driver training areas, (N) tank/assault gun firing ranges, (P) flat trajectory firing ranges, (Q) artillery emplacements (batteries), (R) infantry or combined arms field training area or courses, (S) special training facilities, (T) unidentified facilities or tracking activity.

NPIC/R-451/64

SLUTSK ARMY BARRACKS SOUTHWEST
(53-01N 027-32E)
SLUTSK, MINSKAYA OBLAST, USSR
BELORUSSIAN MD

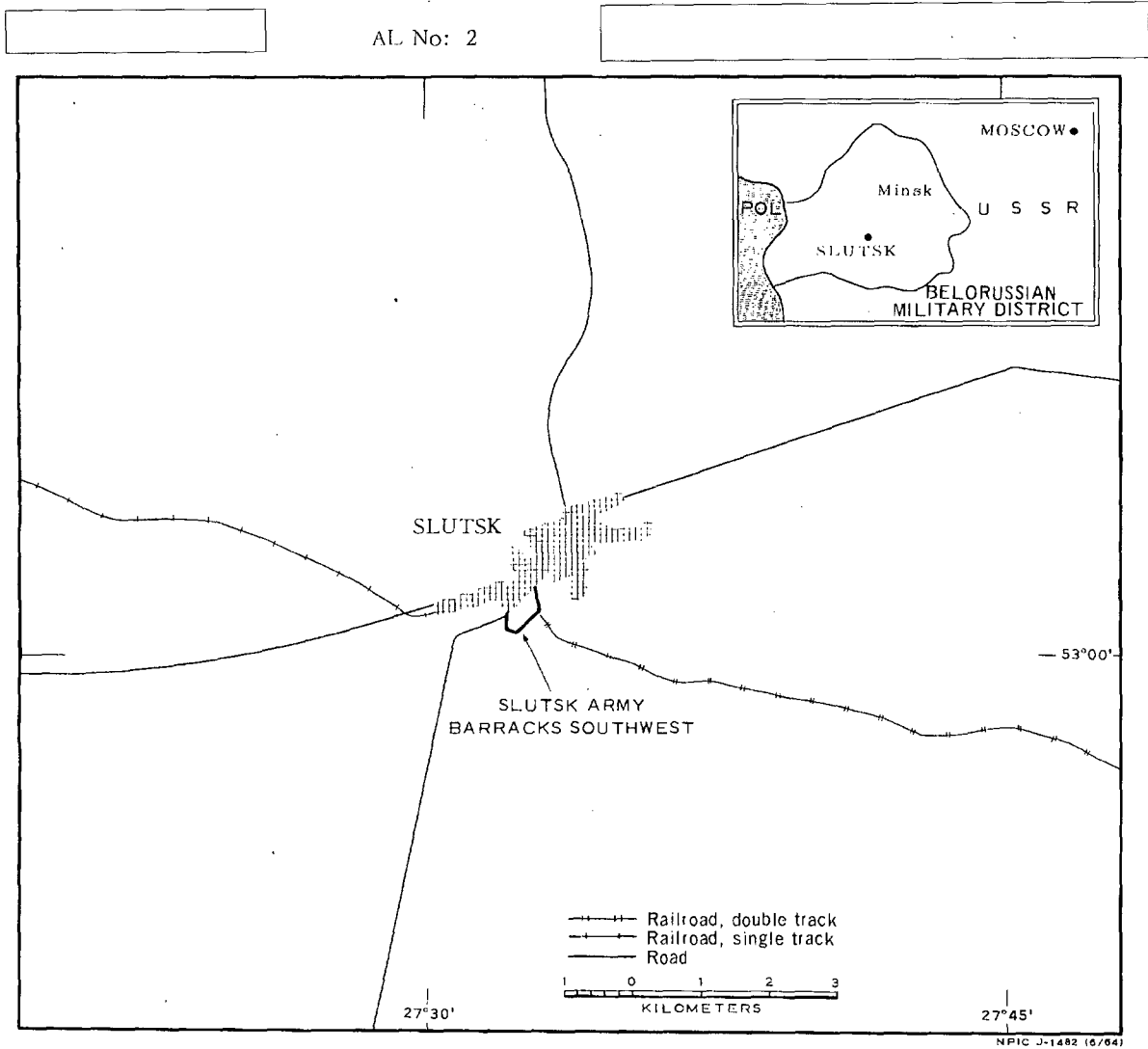


FIGURE 1. LOCATION OF SLUTSK ARMY BARRACKS SOUTHWEST.

SUMMARY

The secured Slutsk Army Barracks Southwest (Figure 1) is located in the southern sector of Slutsk (53-02N 027-34E). The Slutsk-Urechye rail line bisects the installation; however, rail service could not be determined. An all-weather road provides access to Slutsk and to the Minsk-Slutsk highway.

The installation (Figures 2 and 3) covers approximately 400 acres and contains three administration buildings, 14 barracks, 20 storage buildings, 57 support buildings, and 10 dependent/officer quarters. The installation also contains three vehicle parks, five vehicle mainten-

ance buildings, two vehicle sheds, two small arms firing ranges, an athletic field, and an open storage area.

The area is covered by 1956 TALENT photography and nine KEYHOLE missions between August 1961 and December 1963. Comparative analysis reveals the same general level of activity between August 1961 and December 1963, with a decrease in activity during the winter months. The poor quality and obliquity of the TALENT photography precludes its use for detailed interpretation. No significant changes are observed on the KEYHOLE coverage.

DESCRIPTION OF INSTALLATION

Railroad Service

No rail facilities were identified; however, the Slutsk-Urechye rail line bisects the installation.

Road Service

An all-weather road provides access to Slutsk and the Minsk-Nesvizh highway.

Administrative and Troop Housing Areas

Area D1 (Figure 3) is secured and contains one administration building, one storage building, and two support buildings.

Area D2 consists of one administration building in a secured area.

Area D3 is secured and contains two barracks, one storage building, and three support buildings.

Area D4 is secured and contains one bar-

racks, two storage buildings, and one support building.

Area D5 contains one administration building, seven barracks, four storage buildings, and 10 support buildings.

Area D6 is secured and contains four barracks and three support buildings.

Trackage in these areas indicates a higher level of activity during the summer months.

General Storage Areas

Area E1 contains four storage buildings and one support building.

Area E2 is an open storage area adjacent to the rail line.

Area E3 contains one storage building and one support building.

Area E4 contains three storage buildings and three support buildings.

All areas appear active.

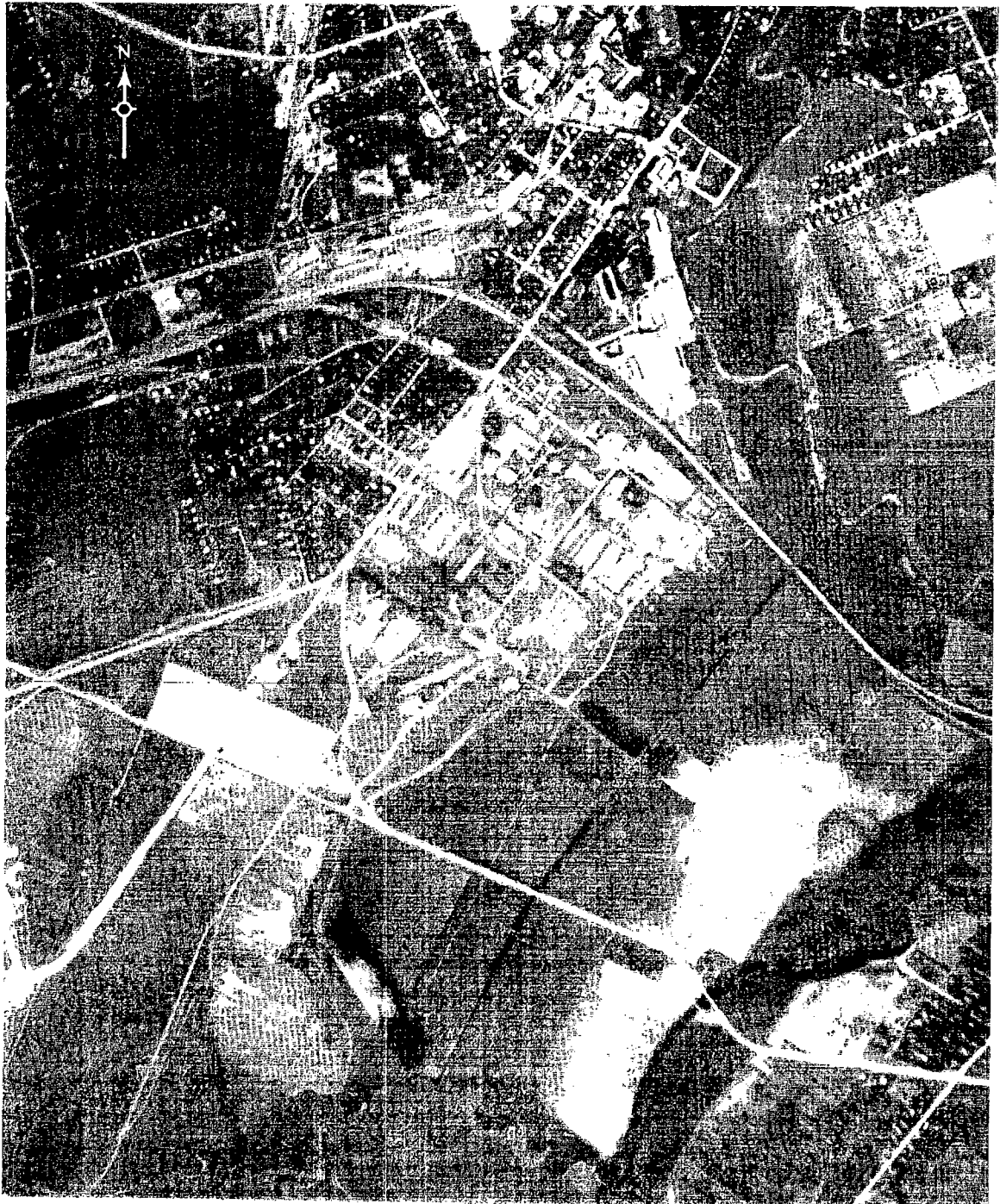


FIGURE 2. SLUTSK ARMY BARRACKS SOUTHWEST, SLUTSK, USSR, JULY 1963.

NPIC J-1483 16/643

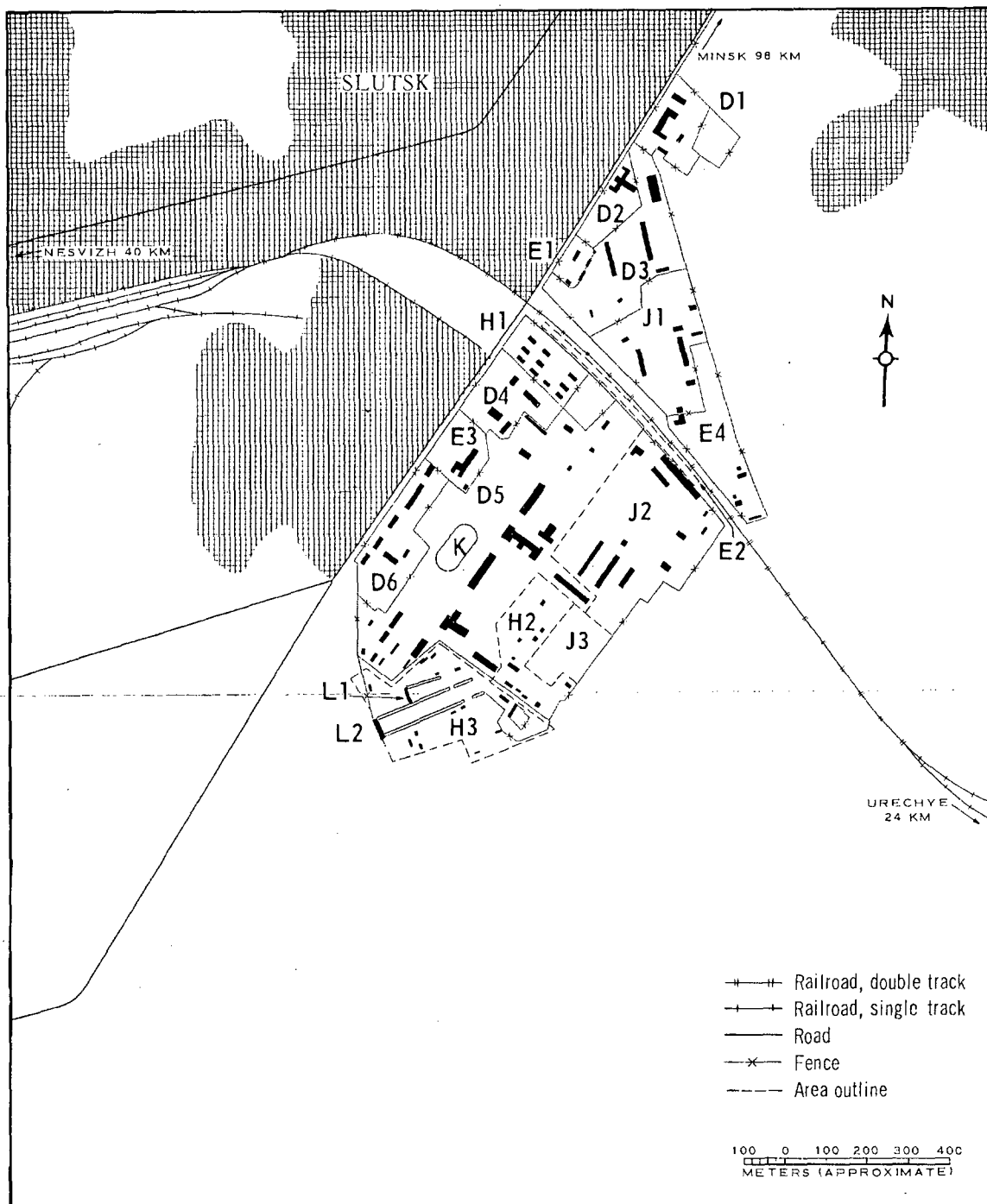


FIGURE 3. SLUTSK ARMY BARRACKS SOUTHWEST. Sketch compiled from [redacted] December 1963.

NPIC J-1484 (6/54)

NPIC/R-451/64

Other Buildings

Area H1 has 10 dependent/officer quarters.
Area H2 has 11 support buildings.
Area H3 has 14 support buildings.
All of these areas appear to be active.

Equipment Storage/Maintenance Areas

Area J1 contains two 240- by 50-foot vehicle maintenance buildings, two storage buildings, four support buildings, and an 820- by 300-foot vehicle park in which seven rows of vehicles were observed on December 1963 coverage.

Area J2 contains one 450- by 60-foot vehicle maintenance building, two 180- by 50-foot vehicle maintenance buildings, two 350- by 50-foot vehicle sheds, two storage buildings, four

support buildings, and a 750- by 600-foot vehicle park in which five rows of possible vehicles were observed on December 1963 coverage.

Area J3 is a 640- by 400-foot vehicle park in which six rows of possible vehicles were observed on December 1963 coverage.

Athletic Field

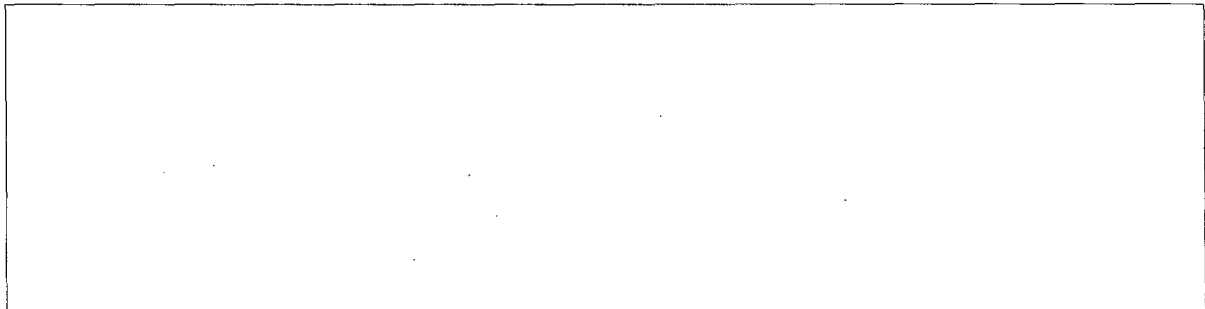
Area K is an athletic field which was observed in use during the summer months only.

Small Arms Firing Ranges

Area L1 is a 1,000- by 100-foot small arms range and Area L2 is a 420- by 100-foot small arms range. They appear to be used during the summer months only.

REFERENCES

PHOTOGRAPHY



MAPS OR CHARTS

US Air Target Chart, Series 200, Sheet 0168-1911L, 2d ed, Dec 62 (SECRET)

DOCUMENT

Army. PIB TK-20-63, *Military Complex Belorussian MD, Slutsk, USSR*, 18 Mar 63 (TOP SECRET RUFF)

REQUIREMENT

C-RR4-81,113 (partial answer)

NPIC PROJECT

N-236.64