

HR70-14

~~TOP SECRET~~

Copy 106

6 Pages

NPIC/R-456/64

June 1964



PHOTOGRAPHIC INTERPRETATION REPORT

POSTAVY ARMY BARRACKS
POSTAVY, USSR
BELORUSSIAN MD

APPROVED FOR
RELEASE -
HISTORICAL
COLLECTION
DIVISION HR70-14
DATE: 07-18-2012



CIA



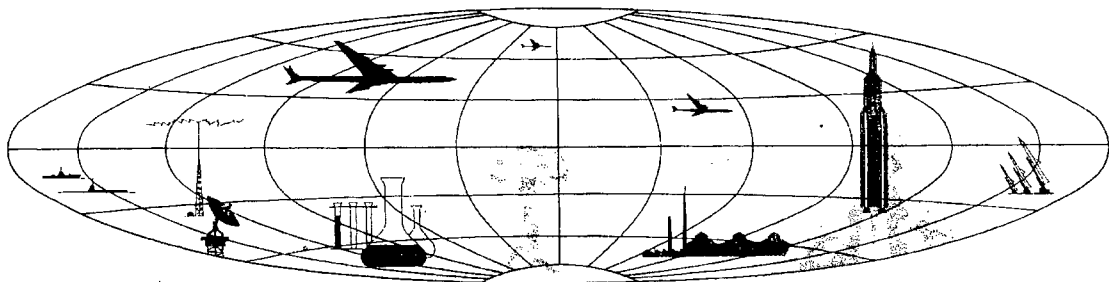
DIA

Handle Via **TALENT - KEYHOLE** Control Only

WARNING

This document contains classified information affecting the national security of the United States within the meaning of the espionage laws U. S. Code Title 18, Sections 793 and 794. The law prohibits its transmission or the revelation of its contents in any manner to an unauthorized person, as well as its use in any manner prejudicial to the safety or interest of the United States or for the benefit of any foreign government to the detriment of the United States. It is to be seen only by personnel especially indoctrinated and authorized to receive TALENT-KEYHOLE information. Its security must be maintained in accordance with KEYHOLE and TALENT regulations.

NATIONAL PHOTOGRAPHIC INTERPRETATION CENTER



~~TOP SECRET~~

GROUP 1
Excluded from automatic
downgrading and declassification

PREFACE

This report is one in a series on Soviet Ground Force and logistic installations being prepared for a DIA/CIA Panel. The series is being coordinated, published and disseminated by NPIC. The photographic analysis is being performed by the NPIC Photographic Analysis Group, the CIA Photographic Intelligence Division (NPIC), and the Production Center 1P1c (DIA). The photographic analysis for this particular report was performed by the NPIC Photographic Analysis Group.

In the interest of uniformity, the titles and letter designators for the facilities observed at these installations are identical with those appearing in the project requirement. When a specific facility is not observed both its title and letter designator are omitted in the report.

Titles and letter designators for the various facilities are as follows: (A) railroad service, (B) road service, (C) landing strips, (D) administrative and troop housing areas, (E) storage areas, (F) ammunition storage areas, (G) POL storage areas, (H) other buildings and facilities, (J) equipment storage/maintenance areas, (K) athletic fields, (L) small arms firing ranges, (M) driver training areas, (N) tank/assault gun firing ranges, (P) flat trajectory firing ranges, (Q) artillery emplacements (batteries), (R) infantry or combined arms field training area or courses, (S) special training facilities, (T) unidentified facilities or tracking activity.

NPIC/R-456/64

POSTAVY ARMY BARRACKS
(55-07N 026-49E)
POSTAVY, VITEBSKAYA OBLÁST, USSR
BELORUSSIAN MD

AL No: 3

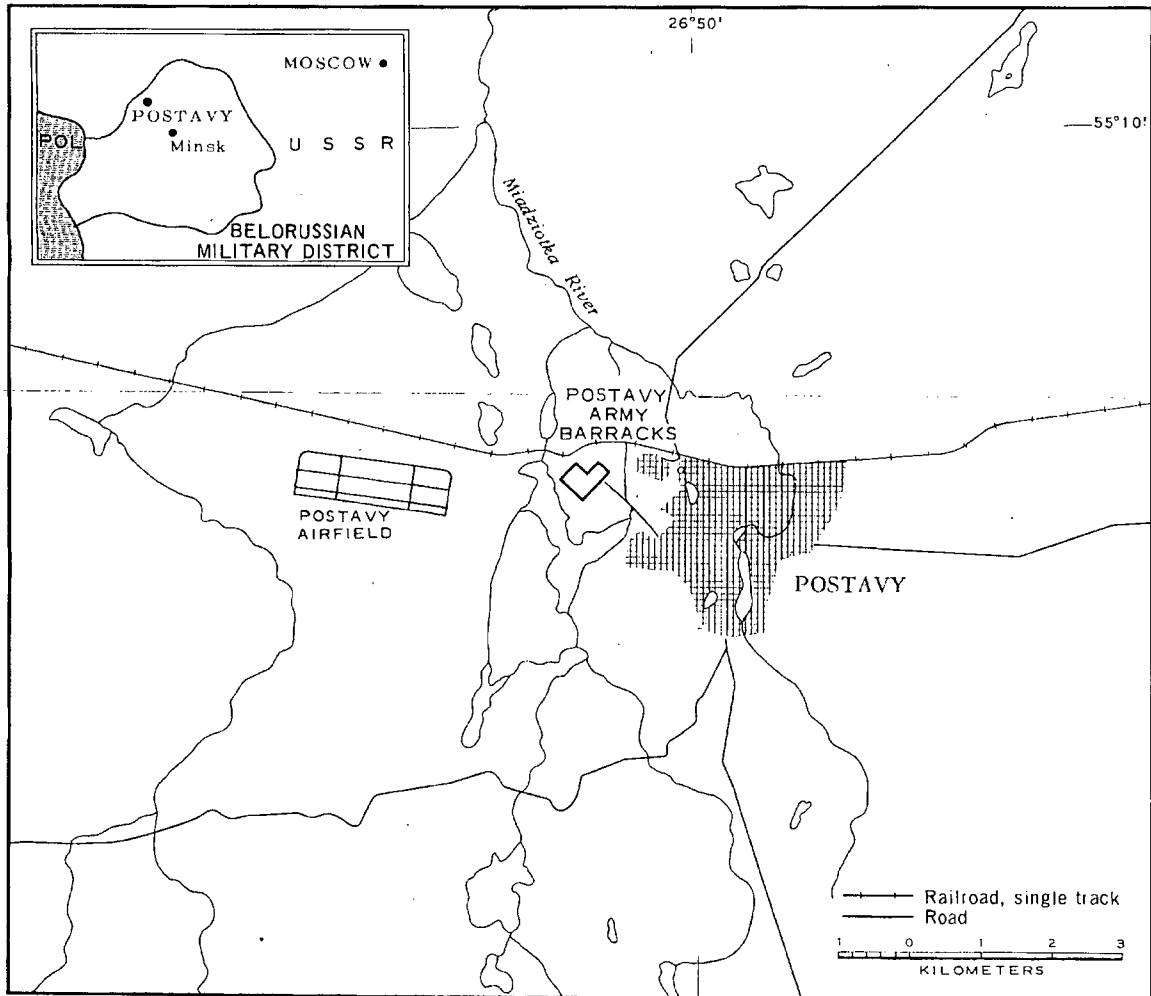


FIGURE 1. LOCATION OF POSTAVY ARMY BARRACKS.

NPIC J-1512 (6/64)

SUMMARY

Postavy Army Barracks is located 1.5 kilometers (km) northwest of Postavy (55-07N 026-50E) on the south side of the Postavy-Pabrade rail line (Figure 1). The installation is not rail served, but it is served by an all-weather secondary road extending from Postavy to the Postavy Airfield. Postavy Barracks and Hq 69th Guards Motorized Rifle Division (AL-2) is located 4 km east.

The installation (Figures 2 and 3) covers approximately 50 acres and contains two administration buildings, eight barracks, eight support buildings, and 43 probable dependents

quarters. The following factors indicate this installation is possibly associated with the airfield: a direct road connection to the Postavy Airfield 2 km west and the absence of facilities such as vehicle sheds, storage buildings, athletic fields or training facilities.

The area was covered by July 1956 TALENT photography and six KEYHOLE missions between August 1961 and February 1964. A comparative analysis of all photography revealed the addition of three barracks and one support building between July 1956 and August 1961. Track activity indicates the area is occupied.

DESCRIPTION OF INSTALLATION

Railroad Service

The installation is not directly rail served; however, the Postavy-Pabrade rail line is 0.5 km north.

Road Service

The installation is served by an all-weather secondary road extending from Postavy to the Postavy Airfield.

Administrative and Troop Housing Area

Area D contains two multistory administration buildings, one of which is enclosed by a

fence, eight multistory barracks, and eight support buildings.

Three barracks and one support building were added between July 1956 and August 1961.

Other Buildings

The installation contains 43 probable dependents quarters with track activity leading to the barracks area.

NPIC/R-456/64

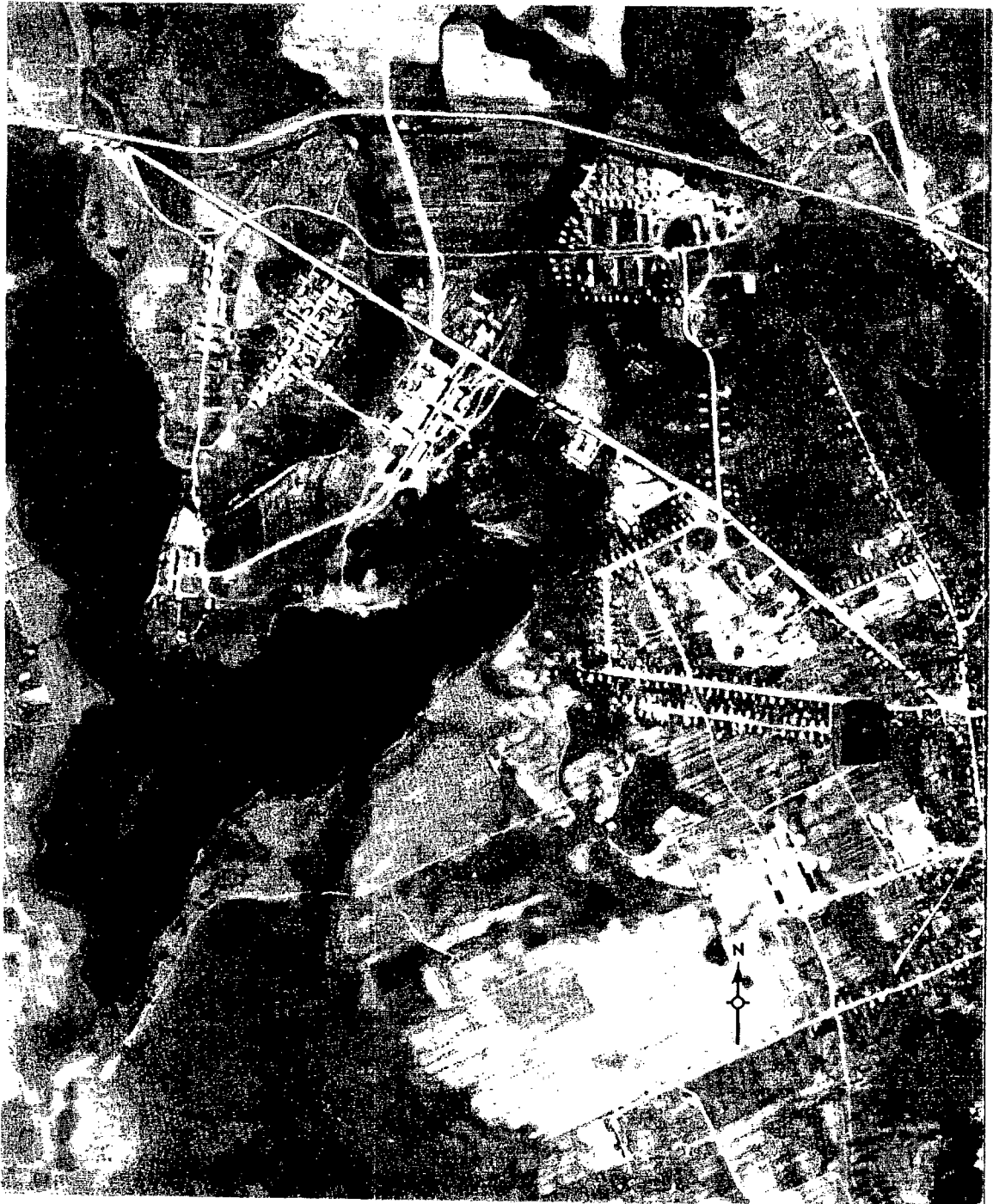


FIGURE 2. POSTAVY ARMY BARRACKS, POSTAVY, USSR, JULY 1963.

NPIC 1-1517 (6/64)

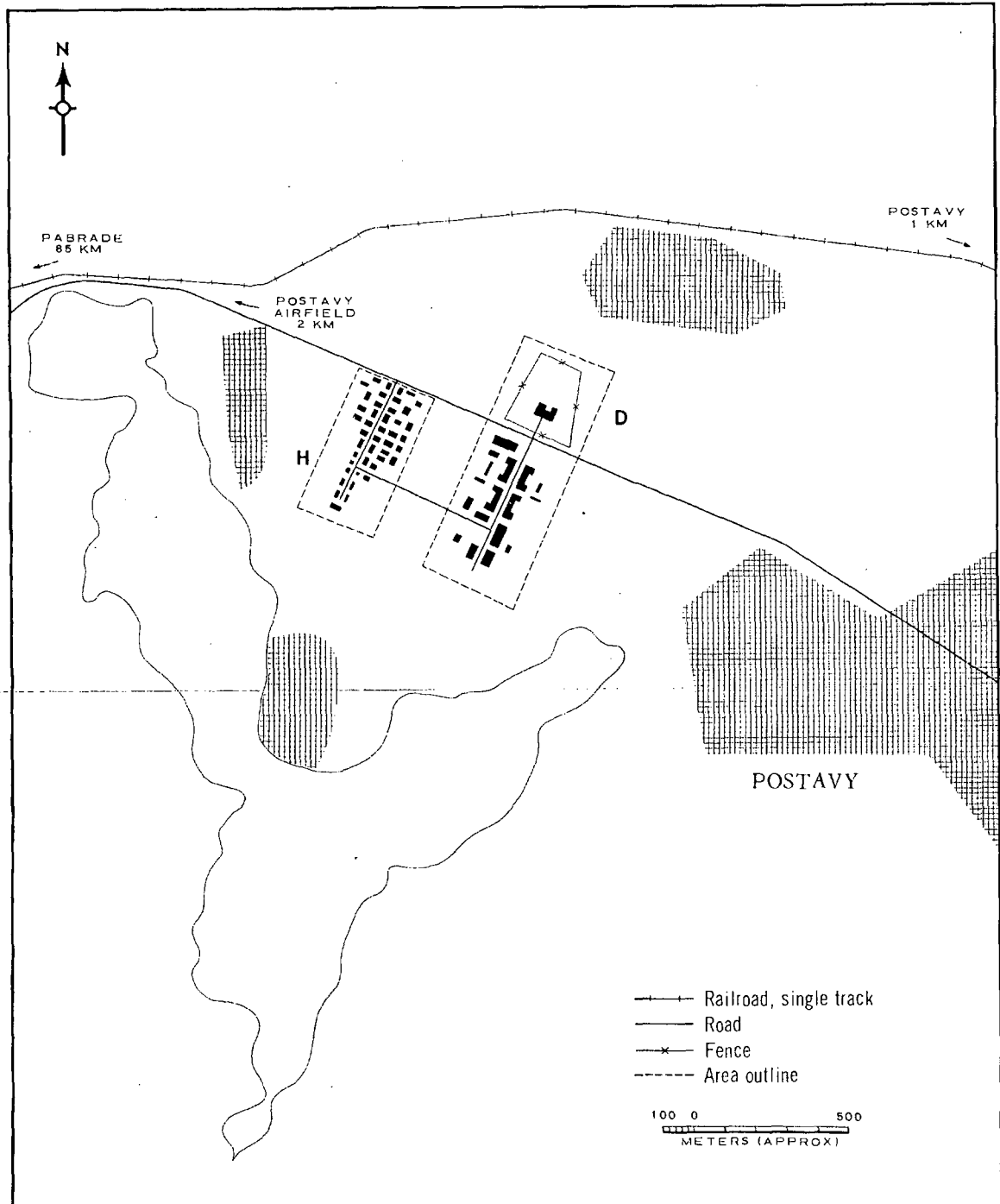


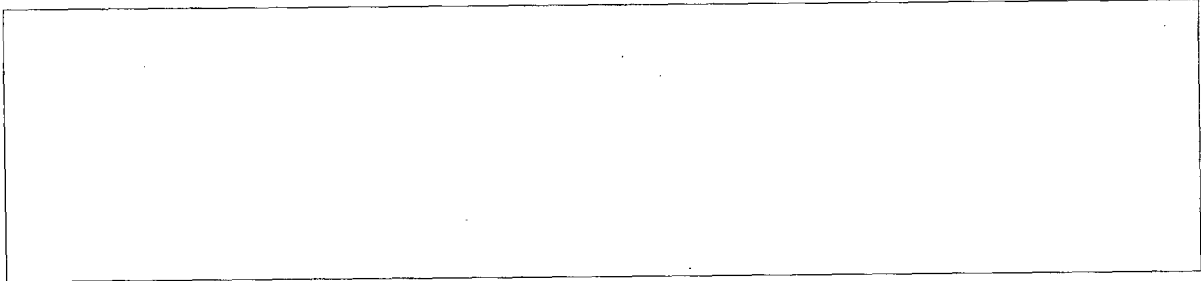
FIGURE 3. POSTAVY ARMY BARRACKS. Sketch compiled from [redacted] July 1963.

NPIC J-1514 (6/64)

NPIC/R-456/64

REFERENCES

PHOTOGRAPHY



MAPS OR CHARTS

US Air Target Chart, Series 200, Sheet 0168-9HL, 2d ed, Sep 62 (SECRET)

DOCUMENTS

Army. SPIR-23-58, *Area Study Molodechnenskaya Oblast, USSR*, 15 Jun 58 (TOP SECRET CHESS)

DIA. PC 225.1-1-63, *Installation List, Soviet Ground Forces*, 1 Oct 63 (SECRET)

REQUIREMENT

C-RR-4-81,111 (partial answer)

NPIC PROJECT

N-236 '64

~~TOP SECRET~~

~~TOP SECRET~~