



PHOTOGRAPHIC INTERPRETATION REPORT

STORAGE AREA OSIPOVICH, USSR BELORUSSIAN MD

APPROVED FOR
RELEASE -
HISTORICAL
COLLECTION
DIVISION HR70-14
DATE: 07-18-2012



CIA



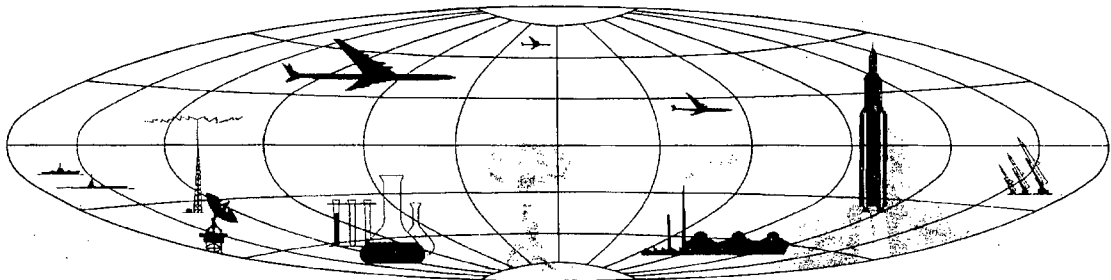
DIA

Handle Via **TALENT - KEYHOLE** Control Only

WARNING

This document contains classified information affecting the national security of the United States within the meaning of the espionage laws U. S. Code Title 18, Sections 793 and 794. The law prohibits its transmission or the revelation of its contents in any manner to an unauthorized person, as well as its use in any manner prejudicial to the safety or interest of the United States or for the benefit of any foreign government to the detriment of the United States. It is to be seen only by personnel especially indoctrinated and authorized to receive TALENT-KEYHOLE information. Its security must be maintained in accordance with KEYHOLE and TALENT regulations.

NATIONAL PHOTOGRAPHIC INTERPRETATION CENTER



PREFACE

This report is one in a series on Soviet Ground Force and logistic installations being prepared for a DIA/CIA Panel. The series is being coordinated, published and disseminated by NPIC. The photographic analysis is being performed by the NPIC Photographic Analysis Group, the CIA Photographic Intelligence Division (NPIC), and the Production Center 1P1c (DIA). The photographic analysis for this particular report was performed by the NPIC Photographic Analysis Group.

In the interest of uniformity, the titles and letter designators for the facilities observed at these installations are identical with those appearing in the project requirement. When a specific facility is not observed both its title and letter designator are omitted in the report.

Titles and letter designators for the various facilities are as follows: (A) railroad service, (B) road service, (C) landing strips, (D) administrative and troop housing areas, (E) storage areas, (F) ammunition storage areas, (G) POL storage areas, (H) other buildings and facilities, (J) equipment storage/maintenance areas, (K) athletic fields, (L) small arms firing ranges, (M) driver training areas, (N) tank/assault gun firing ranges, (P) flat trajectory firing ranges, (Q) artillery emplacements (batteries), (R) infantry or combined arms field training area or courses, (S) special training facilities, (T) unidentified facilities or tracking activity.

NPIC/R-432/64

STORAGE AREA
(53-21N 028-31E)
OSIPOVICH, MOGILEVSKAYA OBLAST, USSR
BELORUSSIAN MD

BE No: See Summary

AL No: 3, 4



COMOR No: None

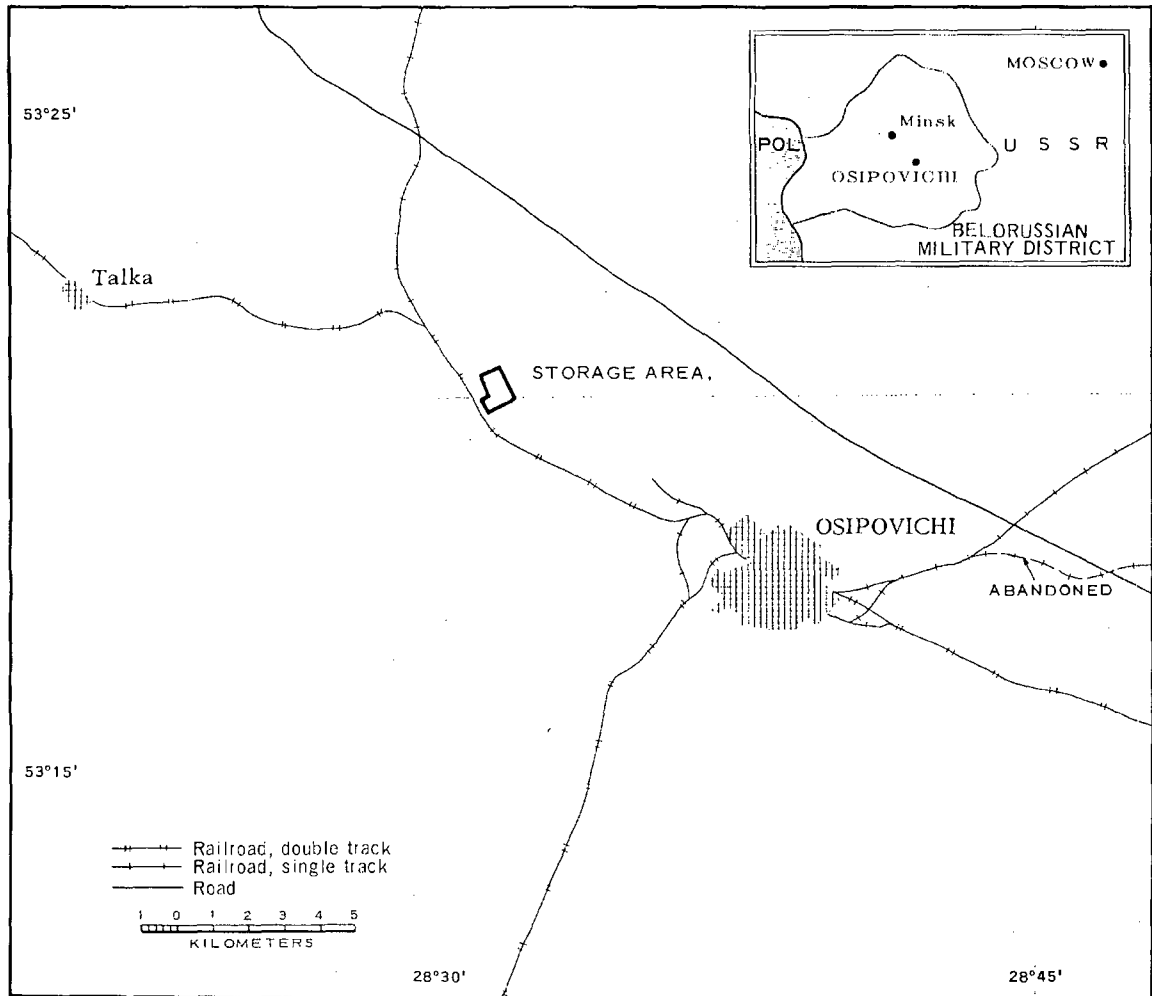


FIGURE 1. LOCATION OF STORAGE AREA, OSIPOVICH.

NPIC J-1332 10/64

SUMMARY

A storage area* is located 9 kilometers (km) northwest of Osipovichi (53-18N 028-39E) on the east side of the Marina Gorka-Osipovichi rail line (Figure 1). The installation is not rail served. A secondary road provides access to the Minsk-Bobruysk Highway.

The installation (Figures 2 and 3) covers 135 acres and contains two administration buildings, five barracks, 13 storage buildings, five probable buildings, six ammunition storage buildings, 11 support buildings, one small arms range, and one athletic field.

The area is covered by 1956 TALENT photography and 10 KEYHOLE missions between December 1961 and February 1964. Comparative analysis revealed the same general level of usage during the summer months between December 1961 and February 1964, but no activity has been observed during the winter months. Significant changes include the addition of five probable storage buildings and the apparent dismantling of two storage buildings and two administration buildings by June 1963.

DESCRIPTION OF INSTALLATION

Railroad Service

This installation has no rail service; however, the double track Marina Gorka-Osipovichi rail line passes the west edge of the installation.

Road Service

A secondary road provides access to Lap-ichi and the Minsk-Bobruysk primary highway.

Administrative and Troop Housing Areas

Area D1 has two administration buildings and three support buildings. Two administration buildings present in July 1956 had been dismantled by June 1963.

Area D2 has five barracks and four support buildings.

All buildings appear to be occupied during time of coverage.

General Storage Area

Area E is a secured area containing 13 storage buildings and five probable buildings (shown by dashed outline in Figure 3). Two storage buildings present in July 1956 had been dismantled by June 1963. Foundations for the five probable buildings were visible on July 1956 coverage.

Ammunition Storage Area

Area F is a secured area containing six unrevetted 55- by 20-foot ammunition storage buildings. Four support buildings are located just outside the secured area.

Athletic Field

Area K is an athletic field.

Small Arms Firing Range

Area L is a 330- by 30-foot small arms range. Immediately north of the range are two small parallel revetments, use unknown.

The range was activated prior to July 1956 and scarring on later coverage indicates the range is consistently active.

*This installation is reported in the DIA PC 225/1-1-63 as AL-3 and 4 and is reported in the Bombing Encyclopedia as Osipovichi Army Barracks Northwest [redacted]

NPIC/R-432/64

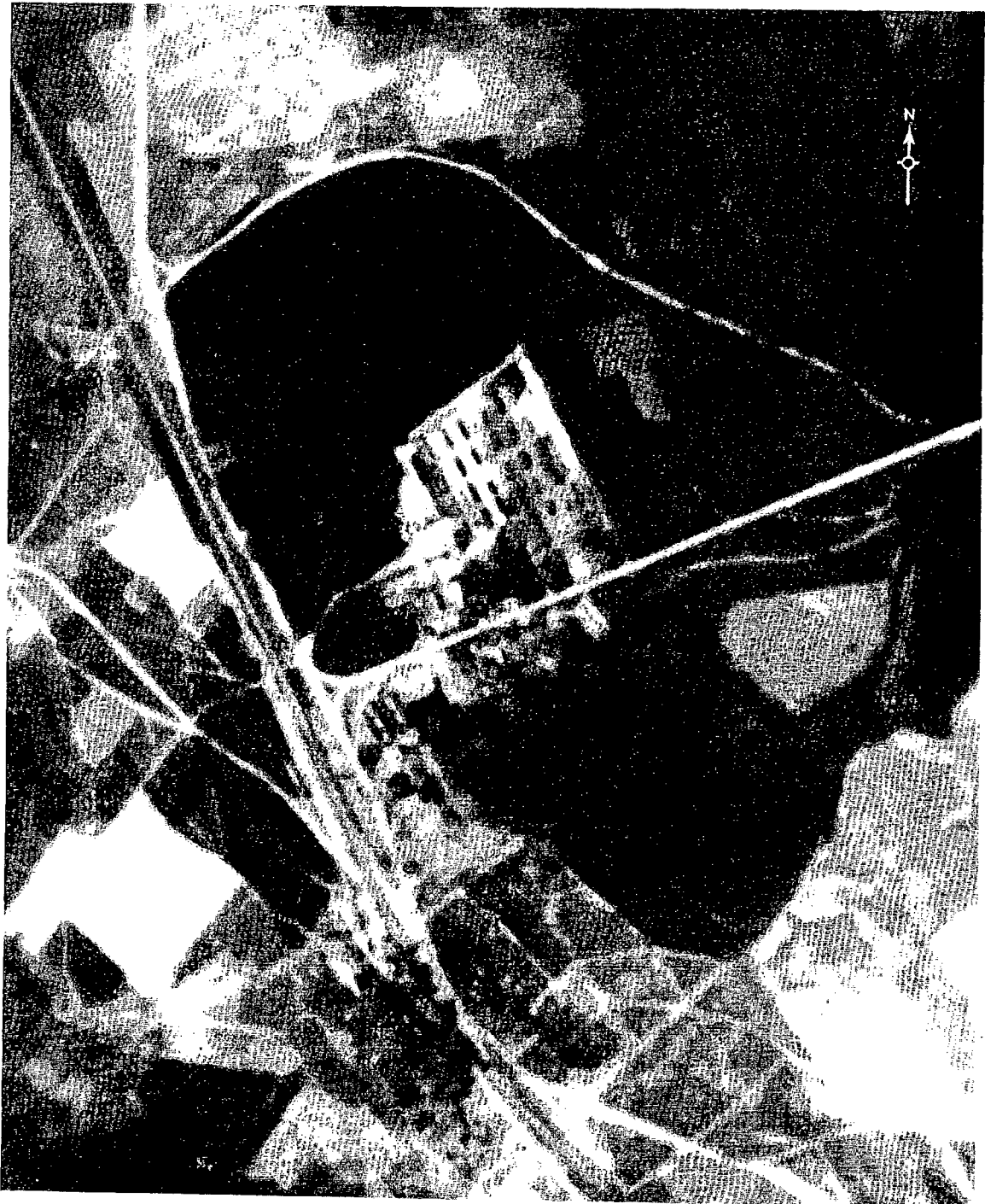


FIGURE 2. STORAGE AREA, OSIPOVICH, USSR, AUGUST 1963.

NPIC J-1338 (6/64)

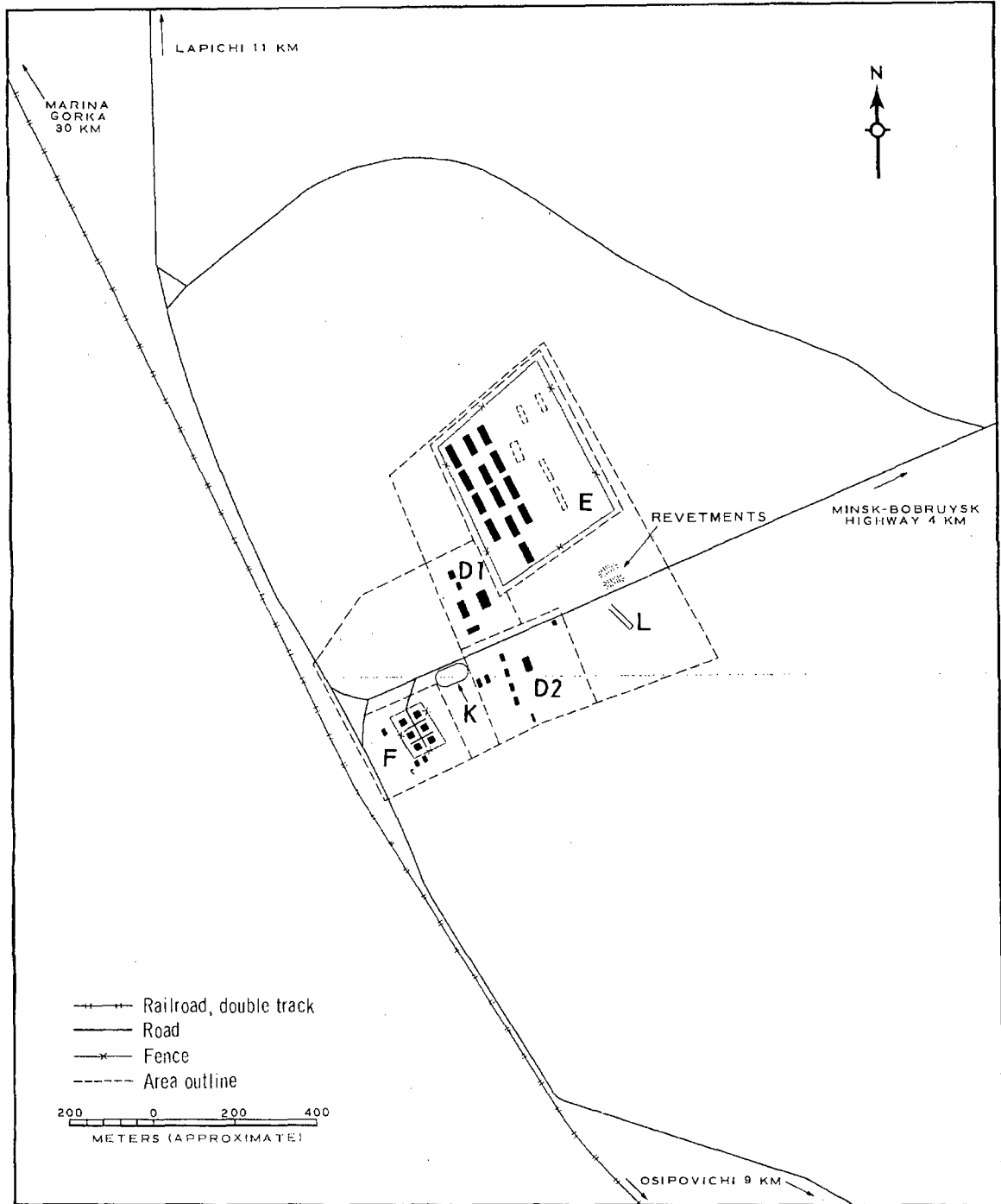
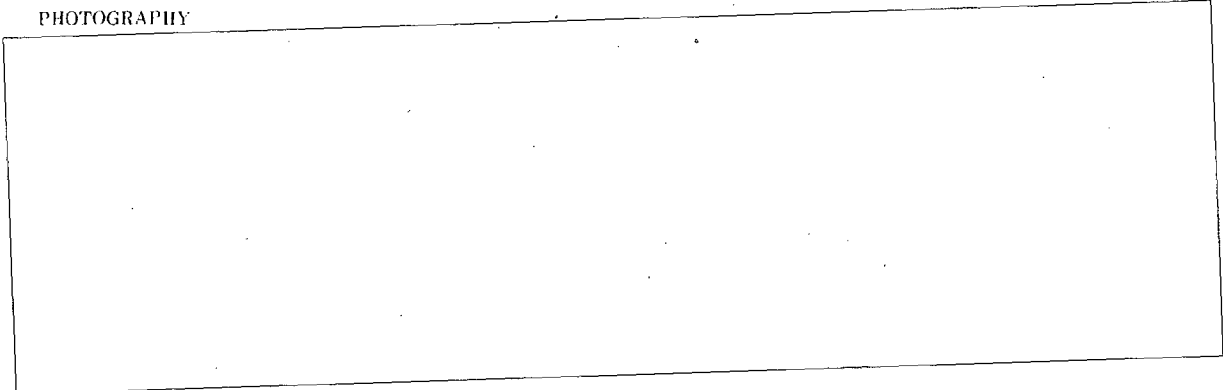


FIGURE 3. STORAGE AREA, OSIPOVICH I. Sketch compiled from [redacted] June 1963 and [redacted] August 1963. NPIC J-1334 16/64

NPIC/R-432/64

REFERENCES

PHOTOGRAPHY



MAPS OR CHARTS

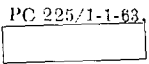
US Air Target Chart, Series 200, Sheet 0165-20HL, 2d ed, Oct 62 (SECRET)

DOCUMENTS

Army. PIB-TK-27-63, *Osipovich Army Barracks and Training Area Northwest*, Apr 63 (TOP SECRET RUFF)

Army. SPIR-4-58, *Military Installations Near Osipovich*, Jan 58 (TOP SECRET CHESS)

DIA. PC 225/1-1-63, *Installations List, Soviet Ground Forces*, 1 Oct 63 (SECRET)



REQUIREMENT

C-RR4-81,111 (partial answer)

NPIC PROJECT

N-236/63

~~TOP SECRET~~

~~TOP SECRET~~