

HR70-14

~~TOP SECRET~~

Copy 106

NPIC/R-417/64

6 Pages

June 1964



PHOTOGRAPHIC INTERPRETATION REPORT

# KRUPKI ARMY BARRACKS KRUPKI, USSR BELORUSSIAN MD

APPROVED FOR  
RELEASE -  
HISTORICAL  
COLLECTION  
DIVISION HR70-14  
DATE: 07-18-2012



CIA



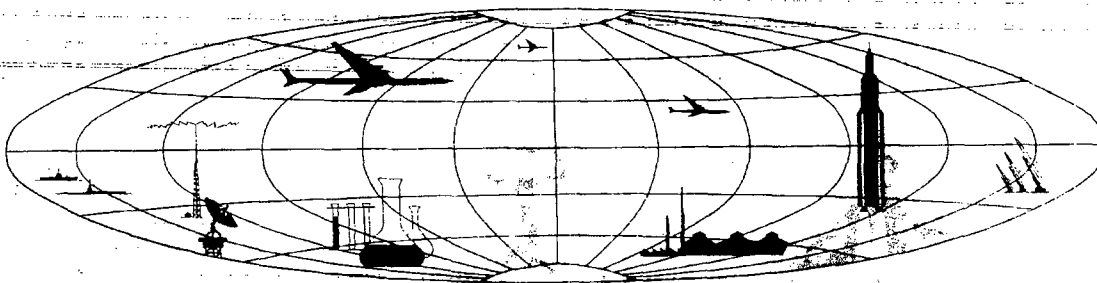
DIA

Handle Via **TALENT - KEYHOLE** Control Only

WARNING

This document contains classified information affecting the national security of the United States within the meaning of the espionage laws U. S. Code Title 18, Sections 793 and 794. The law prohibits its transmission or the revelation of its contents in any manner to an unauthorized person, as well as its use in any manner prejudicial to the safety or interest of the United States or for the benefit of any foreign government to the detriment of the United States. It is to be seen only by personnel especially indoctrinated and authorized to receive TALENT-KEYHOLE information. Its security must be maintained in accordance with KEYHOLE and TALENT regulations.

NATIONAL PHOTOGRAPHIC INTERPRETATION CENTER



~~TOP SECRET~~

GROUP 1  
Excluded from automatic  
downgrading and declassification

PREFACE

This report is one in a series on Soviet Ground Force and logistic installations being prepared for a DIA/CIA Panel. The series is being coordinated, published and disseminated by NPIC. The photographic analysis is being performed by the NPIC Photographic Analysis Group, the CIA Photographic Intelligence Division (NPIC), and the Production Center LPIC (DIA). The photographic analysis for this particular report was performed by the NPIC Photographic Analysis Group.

In the interest of uniformity, the titles and letter designators for the facilities observed at these installations are identical with those appearing in the project requirement. When a specific facility is not observed both its title and letter designator are omitted in the report.

Titles and letter designators for the various facilities are as follows: (A) railroad service, (B) road service, (C) landing strips, (D) administrative and troop housing areas, (E) storage areas, (F) ammunition storage areas, (G) POL storage areas, (H) other buildings and facilities, (J) equipment storage/maintenance areas, (K) athletic fields, (L) small arms firing ranges, (M) driver training areas, (N) tank/assault gun firing ranges, (P) flat trajectory firing ranges, (Q) artillery emplacements (batteries), (R) infantry or combined arms field training area or courses, (S) special training facilities, (T) unidentified facilities or tracking activity.

NPIC/R-417/64

KRUPKI ARMY BARRACKS  
(54-19N 029-12E)  
KRUPKI, MINSKAYA OBLAST, USSR  
BELORUSSIAN MD

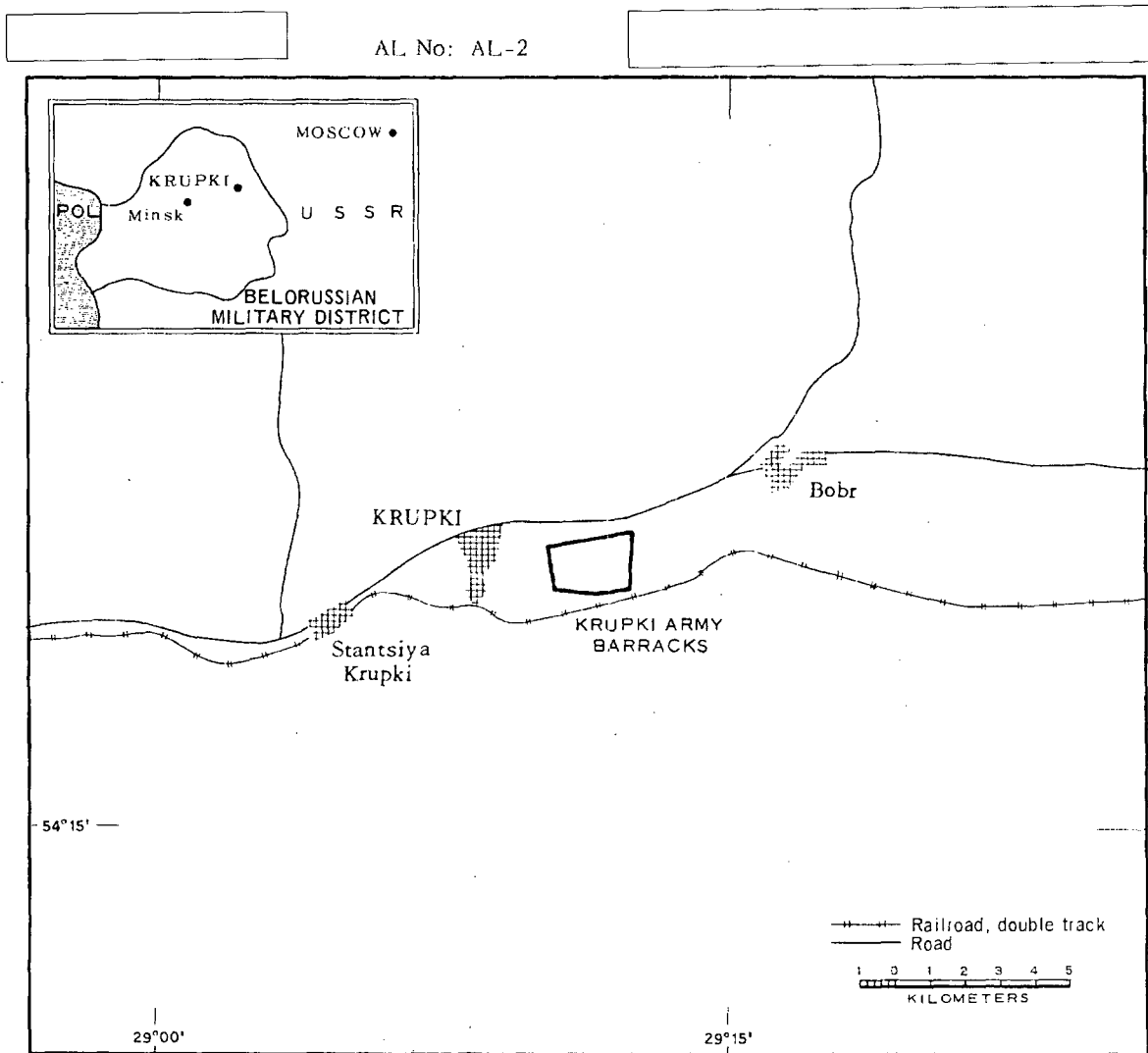


FIGURE 1. LOCATION OF KRUPKI ARMY BARRACKS.

**SUMMARY**

Krupki Army Barracks is located three kilometers (km) east of Krupki (54-19N 029-08E) north of the Orsha/Borisov rail line (Figure 1). The installation is not rail served. An all-weather secondary road provides access to the Orsha/Borisov highway one km north. Other significant installations in the vicinity include Bobr Ammunition Depot South [redacted] located 6 km east and Krupki Petroleum Storage (AL-1 [redacted]) 10 km west.

The installation, probably secured, covers 1,240 acres and contains two administration buildings, 17 barracks, 11 support buildings,

four storage buildings, seven vehicle sheds, one vehicle park, and three cleared strips in wooded areas probably utilized as tent areas (Figures 2 and 3). These tent areas probably provide temporary billeting for additional troops during the summer months training period.

The area is covered by 1956 TALENT photography and 12 KEYHOLE missions between July 1961 and February 1964. Comparative analysis reveals a consistent level of moderate usage. The only change in facilities noted since 1956 is the addition of two cleared strips as tent areas.

**DESCRIPTION OF INSTALLATION**

**Railroad Service**

The Orsha/Borisov rail line passes the installation 300 meters to the south; however, it does not directly serve the area.

**Road Service**

A secondary road provides access to the all-weather primary Orsha/Borisov highway.

**Administrative and Troop Housing Area**

Area D (Figure 3) contains one administration building, 17 single story barracks, and two small support buildings. Two rows of possible vehicles were observed in the northeast section of this area on February 1964 coverage.

Three cleared strips in wooded areas within the installation are probably utilized as tent areas. Two of these tent areas have been cleared since 1956.

**Other Buildings**

Area H contains four small support buildings located in the northwest corner of the installation.

**Equipment Storage/Maintenance Areas**

Area J1 contains one 140- by 50-foot vehicle shed, one administrative building, and two storage buildings. Three lines of possible vehicles were visible on February 1964 coverage, parked in front of the shed.

Area J2 contains three 160- by 50-foot vehicle sheds, one large support building, one small support building, and one storage building.

Area J3 contains two 160- by 50-foot vehicle sheds and one large storage building.

Area J4 contains one 150- by 50-foot vehicle shed and three small support buildings.

Area J5 consists of a 2,000- by 550-foot unoccupied vehicle park, located outside the probable secured area. Vehicles were observed in this area on 1956 photography.

NPIC/R-417/64

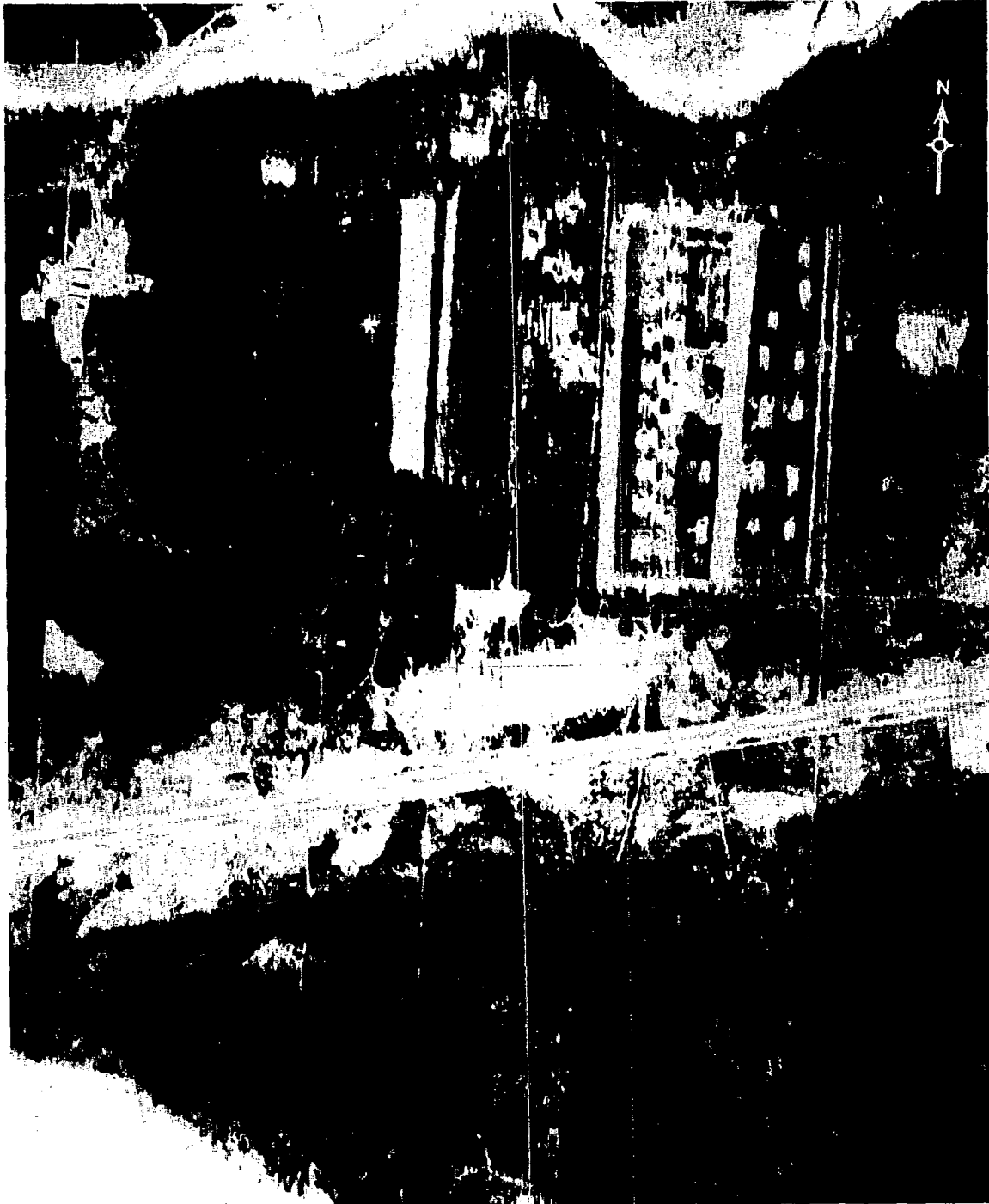


FIGURE 2. KRUPKI ARMY BARRACKS, USSR, FEBRUARY 1964.

NPIC J-1226 (6/64)

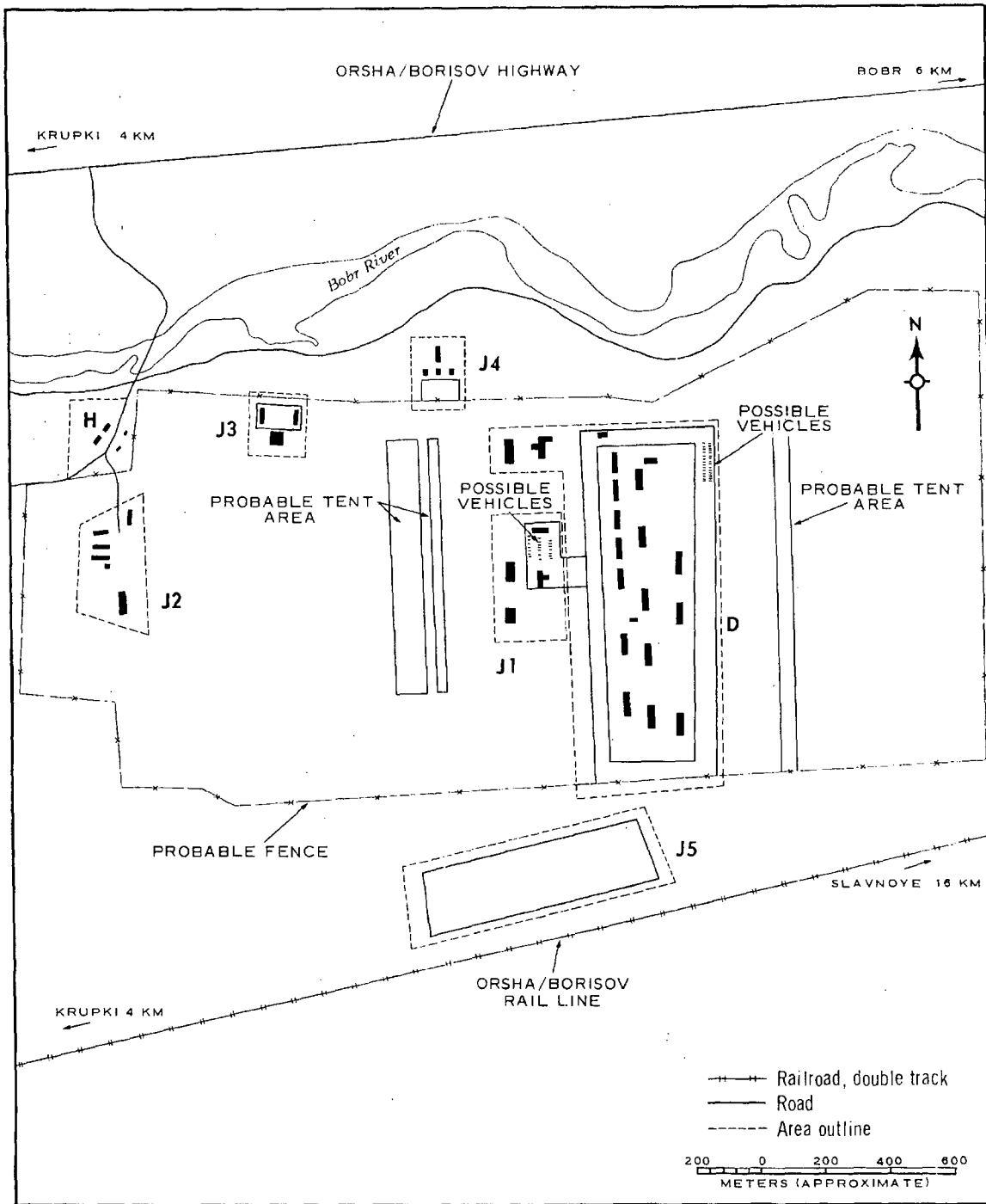
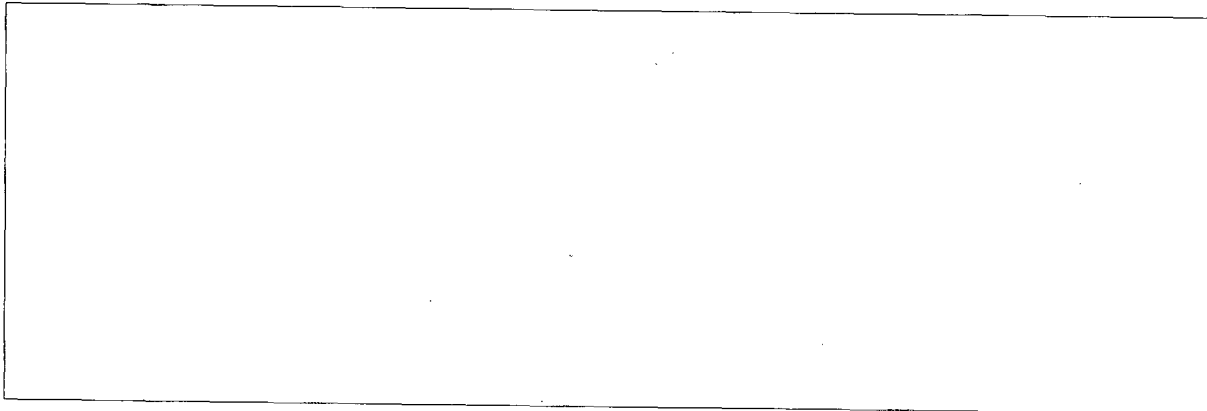


FIGURE 3. KRUPKI ARMY BARRACKS. Sketch compiled from [redacted] February 1964.

NPIC/R-417/64

REFERENCES

PHOTOGRAPHY



MAPS OR CHARTS

US Air Target Chart Series 200, Sheet 0168-15HL, 2d ed, Nov 62 (SECRET)

DOCUMENTS

ARMY. DPIR-4-57, *Krupki Training Area*, 5 Apr 57 (TOP SECRET CHESS)

ARMY. PIB-TK-32 62, *Ammunition Depot, Bobr, USSR*, 4 Jul 62 (TOP SECRET RUFF)

ARMY. PIB-TK-109-62, *Military Installations, Krupki, USSR*, 17 Aug 62 (TOP SECRET RUFF)

REQUIREMENTS

C-RR-4-81,111 (partial answer)

NPIC PROJECT

N-236/64

~~TOP SECRET~~

~~TOP SECRET~~