

HR70-14

~~TOP SECRET~~

Copy
6 Pages

NPIC/R-437/64

June 1964

PHOTOGRAPHIC INTERPRETATION REPORT

SELECTED MILITARY INSTALLATIONS MINSK, USSR BELORUSSIAN MD

APPROVED FOR
RELEASE - HISTORICAL
COLLECTION DIVISION
HR70-14 DATE: 07-18-2012



CIA



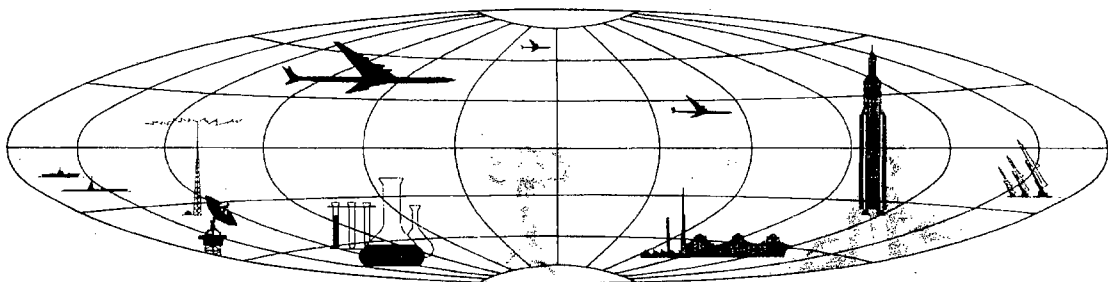
DIA

Handle Via **TALENT - KEYHOLE** Control Only

WARNING

This document contains classified information affecting the national security of the United States within the meaning of the espionage laws U. S. Code Title 18, Sections 793 and 794. The law prohibits its transmission or the revelation of its contents in any manner to an unauthorized person, as well as its use in any manner prejudicial to the safety or interest of the United States or for the benefit of any foreign government to the detriment of the United States. It is to be seen only by personnel especially indoctrinated and authorized to receive TALENT-KEYHOLE information. Its security must be maintained in accordance with KEYHOLE and TALENT regulations.

NATIONAL PHOTOGRAPHIC INTERPRETATION CENTER



~~TOP SECRET~~

GROUP 1
Excluded from automatic
downgrading and declassification

PREFACE

This report is one in a series on Soviet Ground Force and logistic installations being prepared for a DIA/CIA Panel. The series is being coordinated, published and disseminated by NPIC. The photographic analysis is being performed by the NPIC Photographic Analysis Group, the CIA Photographic Intelligence Division (NPIC), and the Production Center 1P1c (DIA). The photographic analysis for this particular report was performed by the NPIC Photographic Analysis Group.

In the interest of uniformity, the titles and letter designators for the facilities observed at these installations are identical with those appearing in the project requirement. When a specific facility is not observed both its title and letter designator are omitted in the report.

Titles and letter designators for the various facilities are as follows: (A) railroad service, (B) road service, (C) landing strips, (D) administrative and troop housing areas, (E) storage areas, (F) ammunition storage areas, (G) POL storage areas, (H) other buildings and facilities, (J) equipment storage/maintenance areas, (K) athletic fields, (L) small arms firing ranges, (M) driver training areas, (N) tank/assault gun firing ranges, (P) flat trajectory firing ranges, (Q) artillery emplacements (batteries), (R) infantry or combined arms field training area or courses, (S) special training facilities, (T) unidentified facilities or tracking activity.

NPIC/R-437/64

SELECTED MILITARY INSTALLATIONS
(53-54N 27-34E)
MINSK, MINSKAYA OBLAST, USSR
BELORUSSIAN MD

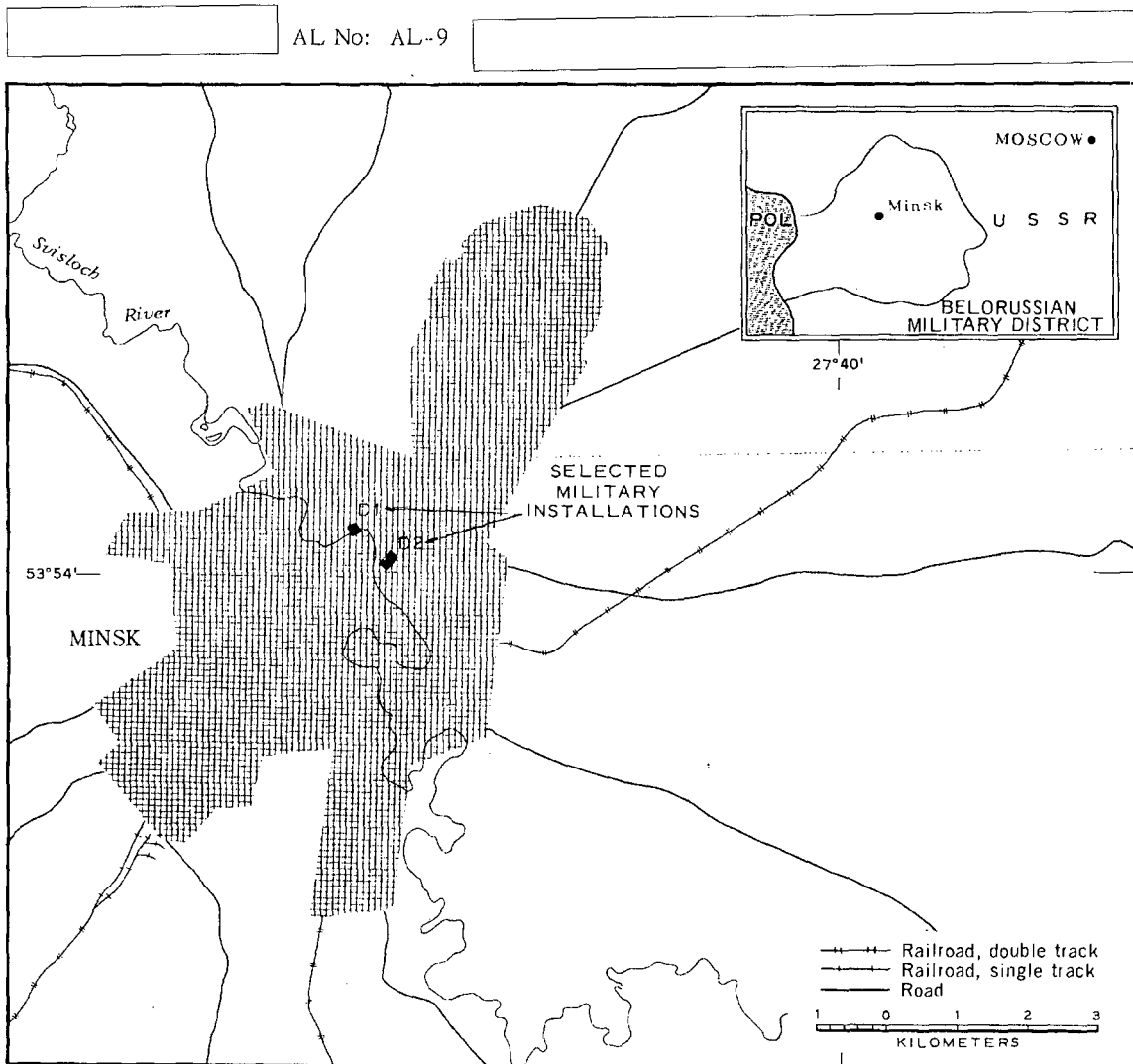


FIGURE 1. LOCATION OF SELECTED MILITARY INSTALLATIONS, MINSK.

NPIC J-1303 16764

SUMMARY

Two small military installations (Figure 1) are located in the central sector of Minsk approximately one kilometer (km) apart and connected by city streets.

Installation D1 (Figures 2 and 3), located at 53-54-37N 27-33-51E, just east of the Opera House, covers approximately nine acres and contains one large, E-shaped multistory administrative building. The area is secured and has a parking area but no support buildings. Area D1 appears to be Headquarters Belorussian Military District [redacted]

[redacted], however, this area is reported in Army, PIB-TK-122-63 as the Minsk Military School [redacted] Installation D2, located at 53-54-15N 27-34-35E covers approximately 12 acres and includes two administration buildings,

three barracks, four support buildings, and one storage building. The area is located just west of the Minsk Supply Depot East (AL-4) and does not appear to be secured. DIA report PC 225/1-1-63 includes area D2 as part of AL-4; however, this area is reported in Army, PIB-TK-122-63 as the Minsk Headquarters Belorussian Military District.

These areas were covered by 1956 TALENT photography and five KEYHOLE missions between August 1961 and February 1964. Comparative analysis revealed the same general level of usage between August 1961 and February 1964 with reduced usage during the winter months. The only change was in area D2, where an L-shaped barracks was first observed on August 1961 coverage.

DESCRIPTION OF INSTALLATION

Railroad Service

The areas are not directly rail served.

Road Service

Minsk city streets provide access to each installation.

Administrative and Troop Housing Areas

Area D1 is secured and contains one large E-shaped administrative building with a parking area.

Area D2 contains one large multiwing and one L-shaped administration building, three multistory barracks (two L-shaped), four small support buildings, and one large storage building. One of the L-shaped barracks was first observed on August 1961 coverage.

NPIC/R-437/64

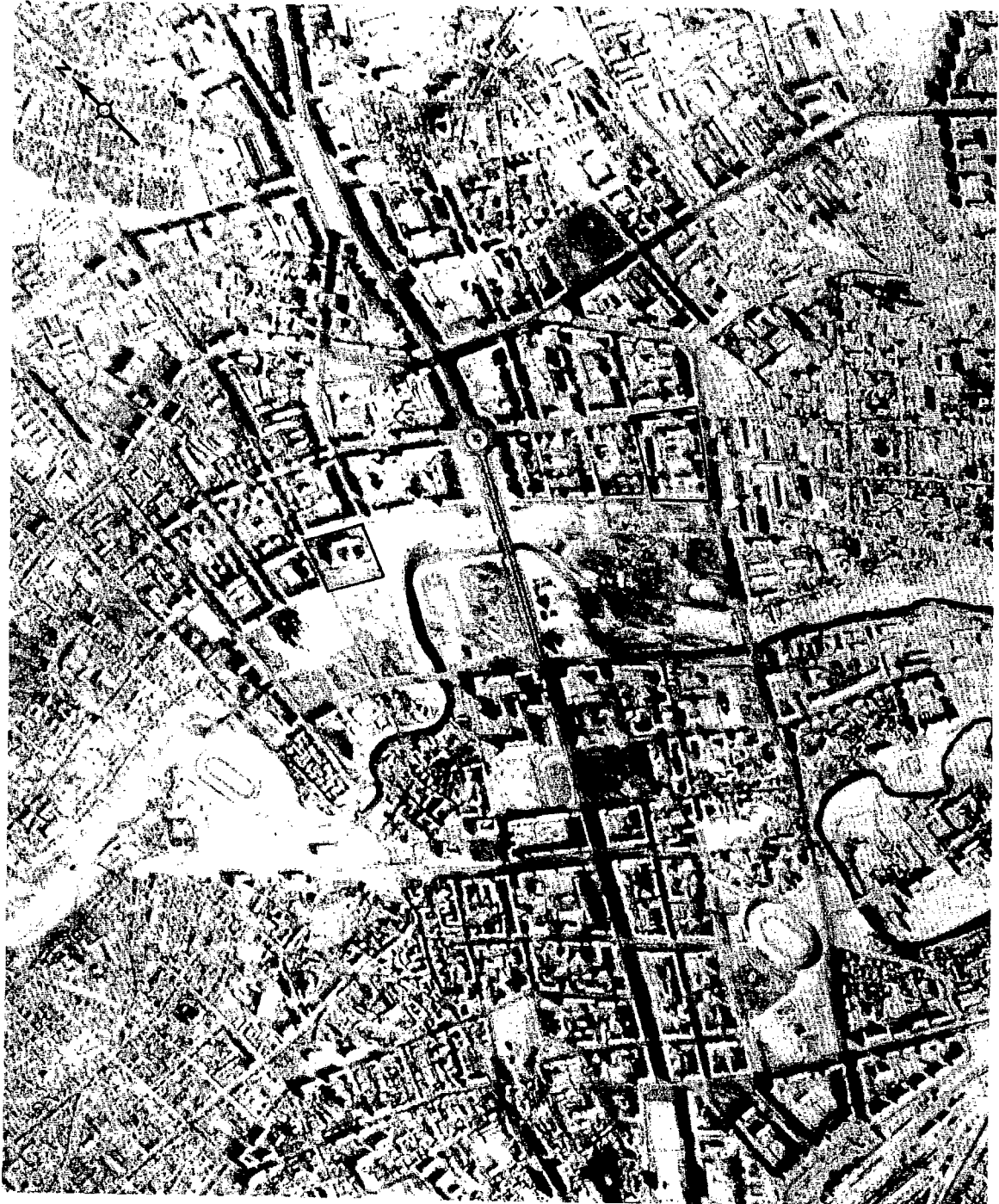


FIGURE 2. SELECTED MILITARY INSTALLATIONS, MINSK, USSR, FEBRUARY 1964.

NPIC J-1324 16/64

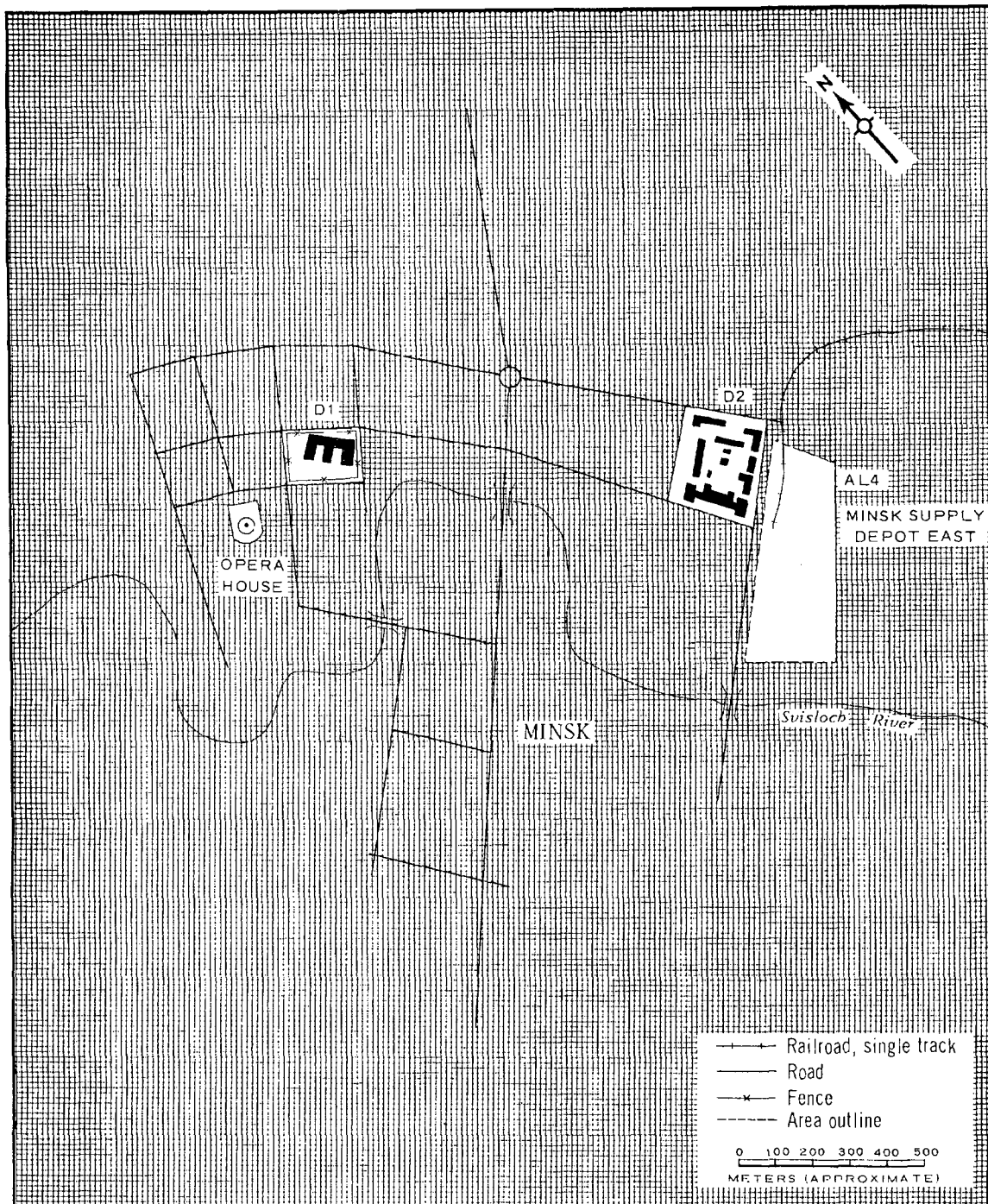
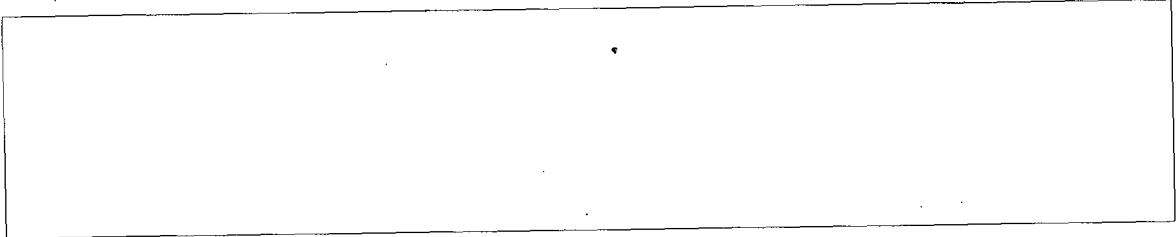


FIGURE 3. SELECTED MILITARY INSTALLATIONS, MINSK. Sketch compiled from [redacted] February 1964.

NPIC/R-437/64

REFERENCES

PHOTOGRAPHY



MAPS OR CHARTS

US Air Target Chart, Series 200, Sheet 0168-141L, 2d ed, Dec 62 (SECRET)

US Air Target Chart, Series 100, Sheet 0168-9997-100A, 2d ed, Feb 52 (CONFIDENTIAL)

US Target Complex Mosaic, Series 25, Sheet 0168-9997-1-25MA, 3d ed, May 60 (SECRET)

DOCUMENTS

Army. PIB-TK-122-63, *Military Installations Minsk, USSR*, 16 Oct 63 (TOP SECRET CHESS RUFF)

DIA. PC 225 1-1-63, *Installations List, Soviet Ground Forces*, 1 Oct 63 (SECRET)

REQUIREMENT

C-RR-4-81,111 (partial answer)

NPIC PROJECT

N-236/64

~~TOP SECRET~~

~~TOP SECRET~~