

HR70-14

Copy **106**
6 Pages

~~TOP SECRET~~

NPIC/R-388/64

June 1964

PHOTOGRAPHIC INTERPRETATION REPORT

MINSK SUPPLY DEPOT EAST MINSK, USSR BELORUSSIAN MD

APPROVED FOR RELEASE
HISTORICAL COLLECTION
DIVISION HR70-14 DATE:
07-18-2012



CIA



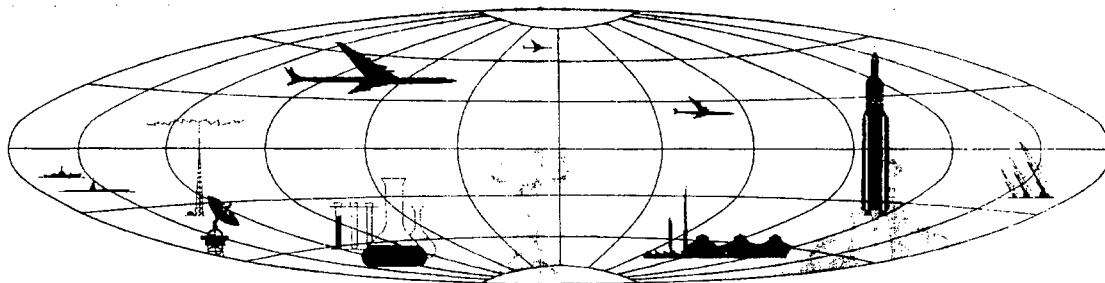
DIA

Handle Via **TALENT - KEYHOLE** Control Only

WARNING

This document contains classified information affecting the national security of the United States within the meaning of the espionage laws U. S. Code Title 18, Sections 793 and 794. The law prohibits its transmission or the revelation of its contents in any manner to an unauthorized person, as well as its use in any manner prejudicial to the safety or interest of the United States or for the benefit of any foreign government to the detriment of the United States. It is to be seen only by personnel especially indoctrinated and authorized to receive TALENT-KEYHOLE information. Its security must be maintained in accordance with KEYHOLE and TALENT regulations.

NATIONAL PHOTOGRAPHIC INTERPRETATION CENTER



~~TOP SECRET~~

GROUP 1
Excluded from automatic
downgrading and declassification

PREFACE

This report is one in a series on Soviet Ground Force and logistic installations being prepared for a DIA/CIA Panel. The series is being coordinated, published and disseminated by NPIC. The photographic analysis is being performed by the NPIC Photographic Analysis Group, the CIA Photographic Intelligence Division (NPIC), and the Production Center 1PIC (DIA). The photographic analysis for this particular report was performed by the NPIC Photographic Analysis Group.

In the interest of uniformity, the titles and letter designators for the facilities observed at these installations are identical with those appearing in the project requirement. When a specific facility is not observed both its title and letter designator are omitted in the report.

Titles and letter designators for the various facilities are as follows: (A) railroad service, (B) road service, (C) landing strips, (D) administrative and troop housing areas, (E) storage areas, (F) ammunition storage areas, (G) POL storage areas, (H) other buildings and facilities, (J) equipment storage/maintenance areas, (K) athletic fields, (L) small arms firing ranges, (M) driver training areas, (N) tank/assault gun firing ranges, (P) flat trajectory firing ranges, (Q) artillery emplacements (batteries), (R) infantry or combined arms field training area or courses, (S) special training facilities, (T) unidentified facilities or tracking activity.

NPIC/R-388/64

MINSK SUPPLY DEPOT EAST
(53-54N 027-34E)
MINSK, MINSKAYA OBLAST, USSR
BELORUSSIAN MD

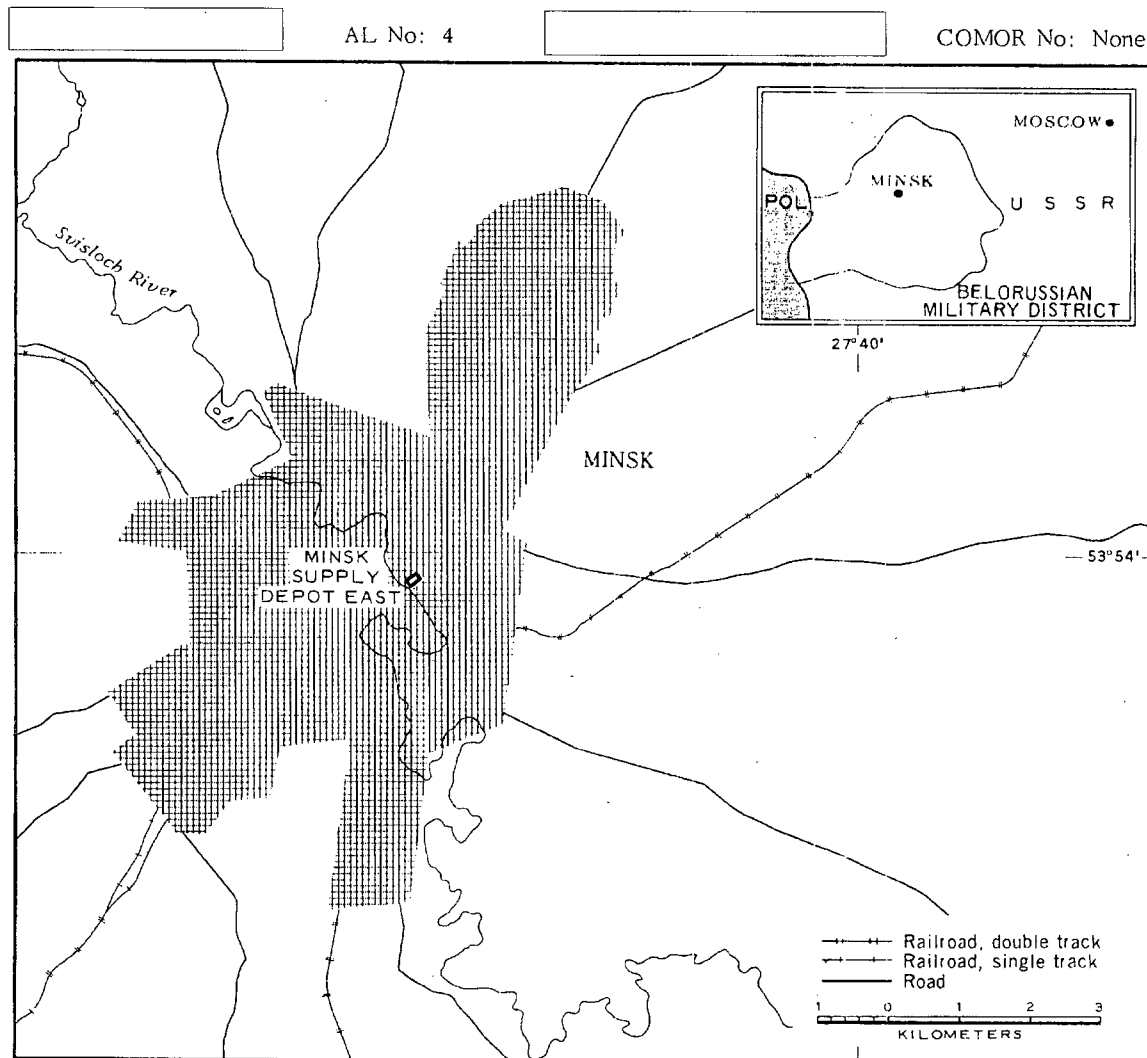


FIGURE 1. LOCATION OF MINSK SUPPLY DEPOT EAST, USSR.

SUMMARY

Minsk Supply Depot East is located in the central section of Minsk (53-54N 027-34E) and is served by a spur from the Minsk-Borisov rail line (Figure 1). Minsk Army Barracks Uruchye (AL-1) is located 10 kilometers (km) northeast and Minsk Army Barracks Northwest (AL-6) is located 7 km northwest. Other military installations are in the Minsk area.

The installation covers 36 acres and includes two administration buildings, seven barracks, 10 storage buildings, two vehicle storage/

maintenance buildings, and nine support buildings (Figures 2 and 3).

The area is covered by 1956 TALENT photography and five KEYHOLE missions between August 1961 and February 1964. Comparative analysis revealed the same general level of usage over this period, with reduced usage during the winter. Significant changes since 1956 include the addition of one administration building, five barracks, two storage buildings, and two support buildings.

DESCRIPTION OF INSTALLATION

Railroad Service

A rail spur from the Minsk-Borisov rail line serves the installation. One probable rail-end dock is alongside a 340- by 100-foot building, reported in Army PIB-TK-122-63 to be a cold-storage building.

Road Service

Urban streets provide access to the installation.

Administrative and Troop Housing Area

Area D (Figure 3) contains two administration buildings, seven barracks, four storage buildings and five support buildings. One administration building, five barracks, and two

storage buildings were first observed on August 1961 coverage.

The extensive billeting capacity in this installation suggests the possibility that personnel associated with other installations are quartered here.

General Storage Area

Area E contains six storage and three support buildings. Two of the support buildings were first observed on August 1961 coverage.

Equipment Storage/Maintenance Area

Area J contains two 260- by 60-foot vehicle storage/maintenance buildings and one support building.

NPIC/R-388/64

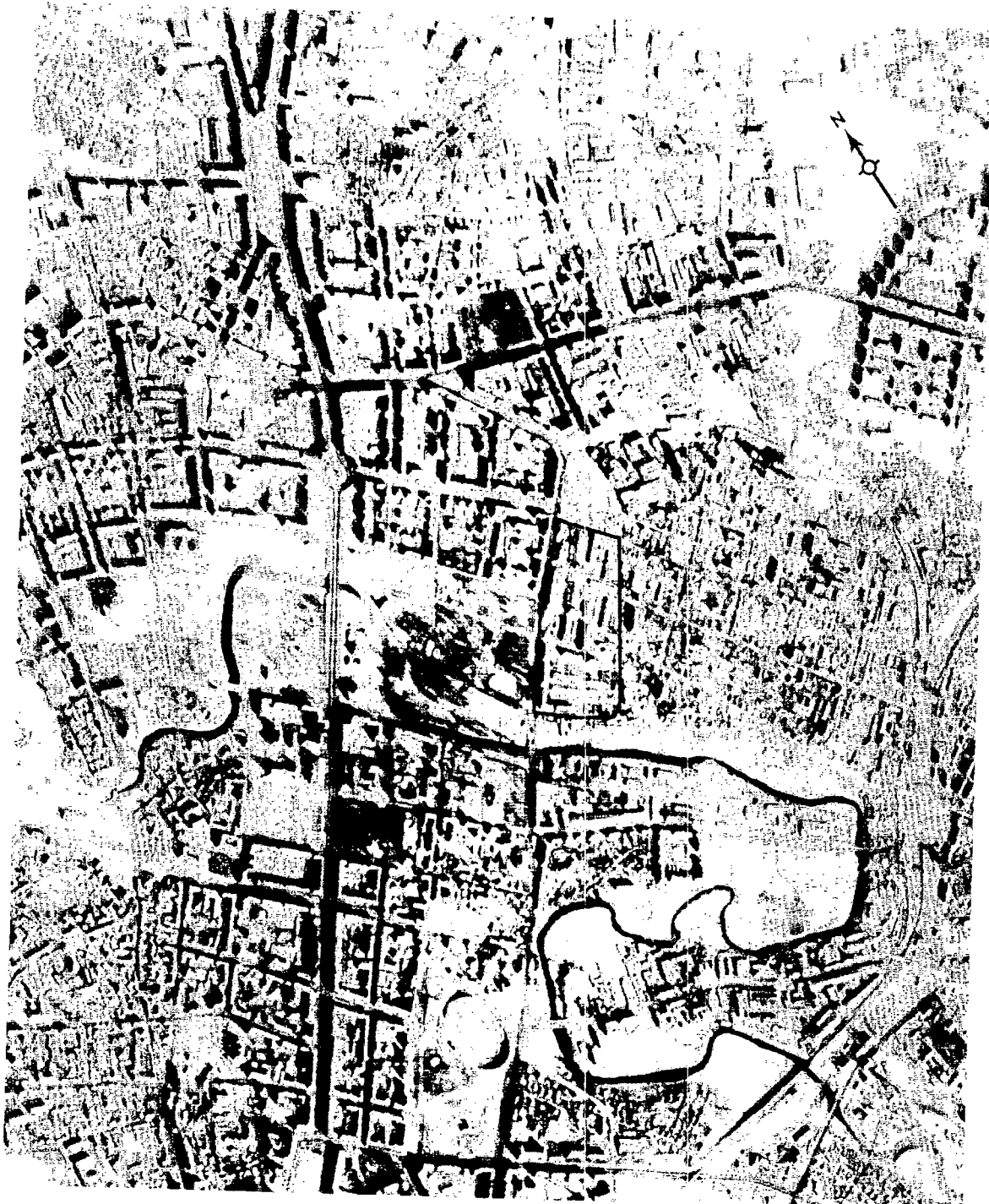


FIGURE 2. MINSK SUPPLY DEPOT EAST, USSR, FEBRUARY 1964.

NPIC J-1145 (6, 64)

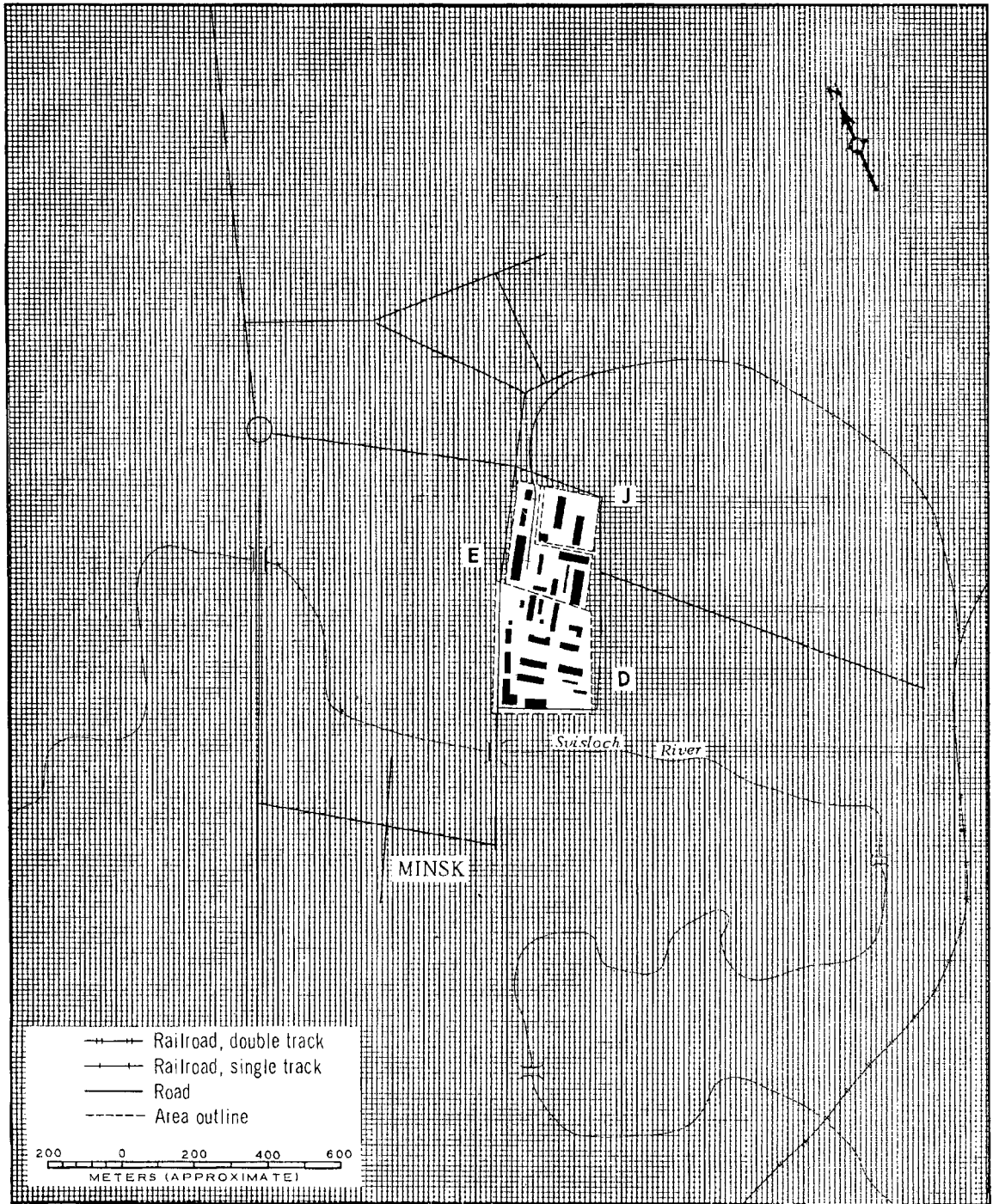
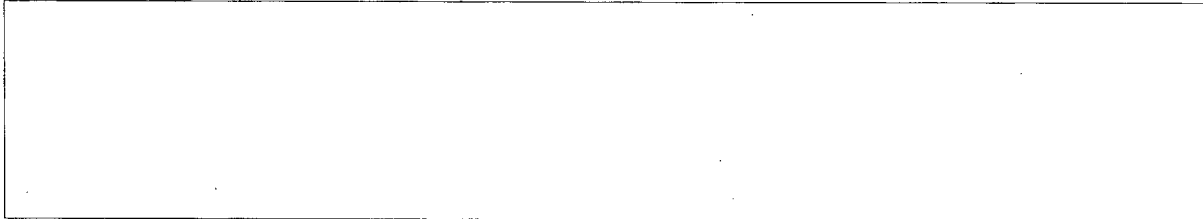


FIGURE 3. MINSK SUPPLY DEPOT EAST, USSR. Sketch compiled from [redacted] February 1964. NPIC J-1147 (6/64)

NPIC/R-388/64

REFERENCES

PHOTOGRAPHY



MAPS OR CHARTS

US Air Target Chart, Series 200, Sheet 0168-14HL, 2d ed, Dec 62 (SECRET)

US Air Target Chart, Series 100, Sheet 0168-9997-100A, 2d ed, Feb 52 (CONFIDENTIAL)

US Target Complex Mosaic, Series 25, Sheet 0168-9997-1-25MA, 3d ed, May 60 (SECRET)

DOCUMENTS

Army. PIB-TK-122-63, *Military Installations Minsk, USSR*, 16 Oct 63 (TOP SECRET CHESS RUFF)

DIA. PC 225/1-1-63, *Installation List, Soviet Ground Forces*, 1 Oct 63 (SECRET)



REQUIREMENT

C-RR-4-81,111 (partial answer)

NPIC PROJECT

N-236/64

~~TOP SECRET~~

~~TOP SECRET~~