

HR70-14

~~TOP SECRET~~

Copy 106  
6 Pages

NPIC/R-446/64  
June 1964

PHOTOGRAPHIC INTERPRETATION REPORT

# SHEPETOVKA ARMY BARRACKS SLAVUTA SLAVUTA, USSR CARPATHIAN MD

APPROVED FOR RELEASE  
Historical Collection Division  
HR70-14  
DATE: 04-27-2012



CIA



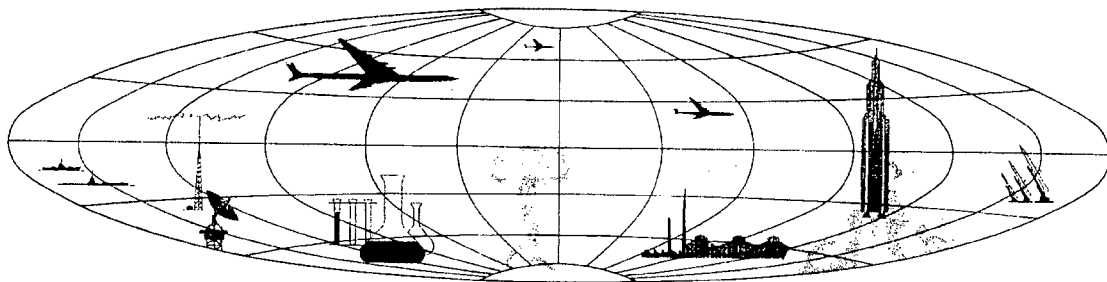
DIA

Handle Via **TALENT - KEYHOLE** Control Only

WARNING

This document contains classified information affecting the national security of the United States within the meaning of the espionage laws U. S. Code Title 18, Sections 793 and 794. The law prohibits its transmission or the revelation of its contents in any manner to an unauthorized person, as well as its use in any manner prejudicial to the safety or interest of the United States or for the benefit of any foreign government to the detriment of the United States. It is to be seen only by personnel especially indoctrinated and authorized to receive TALENT-KEYHOLE information. Its security must be maintained in accordance with KEYHOLE and TALENT regulations.

NATIONAL PHOTOGRAPHIC INTERPRETATION CENTER



~~TOP SECRET~~

GROUP 1  
Excluded from automatic  
downgrading and declassification

## PREFACE

This report is one in a series on Soviet Ground Force and Logistic installations being prepared for a DIA/CIA Panel. The series is being coordinated, published and disseminated by NPIC. The photographic analysis is being performed by the NPIC Photographic Analysis Group, the CIA Photographic Intelligence Division (NPIC), and the Production Center 1P1c (DIA). The photographic analysis for this particular report was performed by the Production Center 1P1c.

In the interest of uniformity, the titles and letter designators for the facilities observed at these installations are identical with those appearing in the project requirement. When a specific facility is not observed both its title and letter designator are omitted in the report.

Titles and letter designators for the various facilities are as follows: (A) railroad service, (B) road service, (C) landing strips, (D) administrative and troop housing areas, (E) storage areas, (F) ammunition storage areas, (G) POL storage areas, (H) other buildings and facilities, (J) equipment storage/maintenance areas, (K) athletic fields, (L) small arms firing ranges, (M) driver training areas, (N) tank/assault gun firing ranges, (P) flat trajectory firing ranges, (Q) artillery emplacements (batteries), (R) infantry or combined arms field training areas or courses, (S) special training facilities, (I) unidentified facilities or tracking activity.

SHEPETOVKA ARMY BARRACKS SLAVUTA  
(50-17N 026-53E)  
SLAVUTA, KHMELNITSKAYA OBLAST, USSR  
CARPATHIAN MD

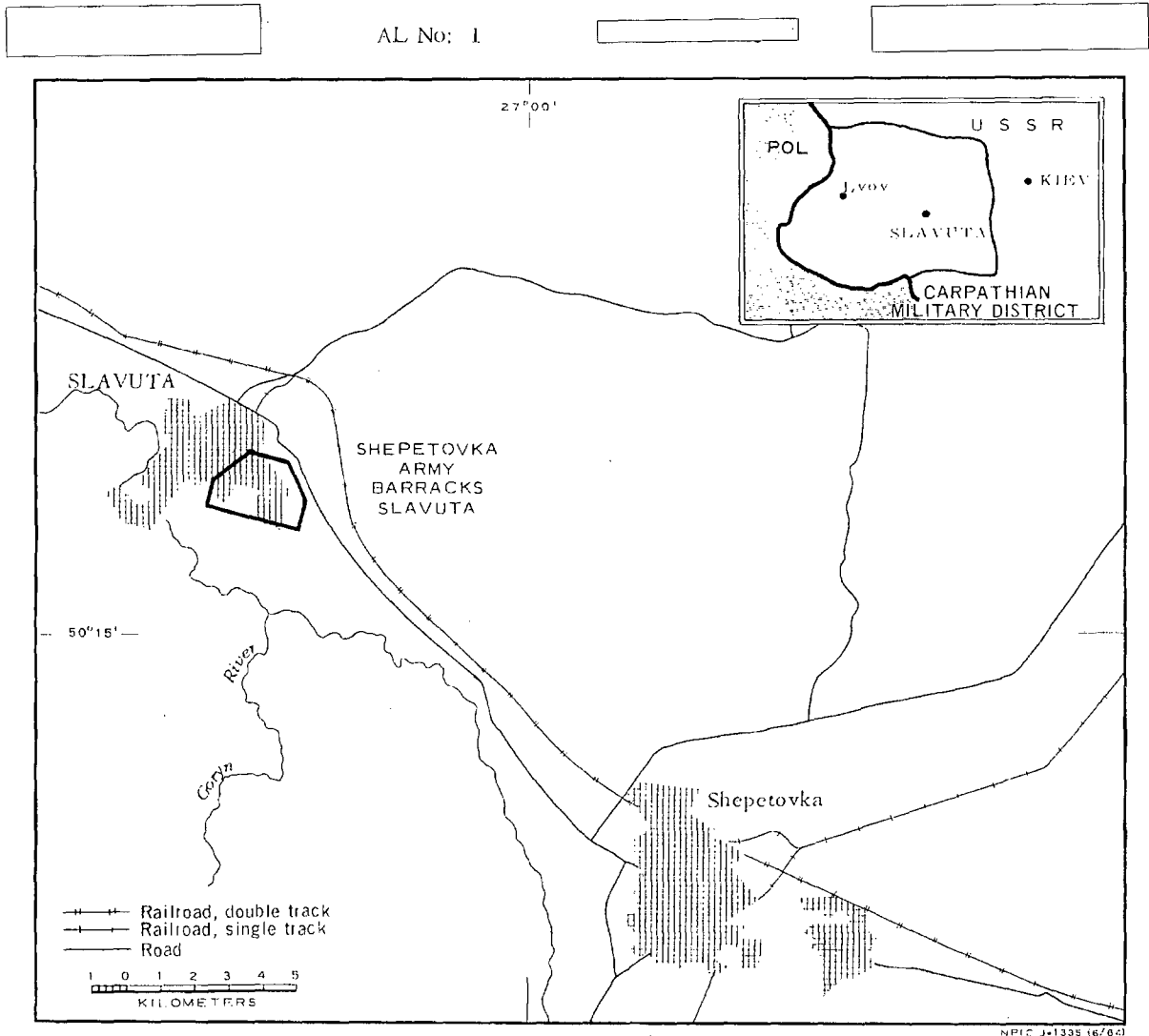


FIGURE 1. LOCATION OF SHEPETOVKA ARMY BARRACKS SLAVUTA.

**SUMMARY**

The Shepetovka Army Barracks Slavuta covers approximately 685 acres and is located in the eastern section of Slavuta immediately north of the Goryn River (Figure 1).

The semi-secured installation is road served and has access to the Berdichev-Rovno rail line.

It contains 23 multistory barracks, 9 multistory administrative buildings, 6 single story administrative buildings, two multistory probable maintenance buildings, one probable single

story maintenance building, seven vehicle storage buildings, 46 storage buildings, six possible ammunition storage buildings, 24 support buildings, and 23 dependent housing quarters.

The installation has two athletic fields and one drill field and reviewing area.

Summer and winter photography indicate that this installation is active and in use. The installation was covered by ten KEYHOLE missions between April 1962 and December 1963.

**DESCRIPTION OF INSTALLATION**

**Railroad Service**

The installation has access to the Berdichev-Rovno rail line.

**Road Service**

The installation is served by improved roads. Unimproved dirt roads run throughout the area.

**Administrative and Troop Housing Areas**

Area D1 contains 13 multistory barracks, two multistory and three single story administrative buildings, five storage buildings and one support building.

Area D2 contains 10 multistory barracks, seven multistory and two single story administrative buildings, three storage buildings, and 11 support buildings.

**General Storage Areas**

Area E1 contains 25 various-sized multi-purpose storage buildings and eight support buildings.

Area E2 contains nine storage buildings probably used in support of the equipment storage area.

**Ammunition Storage Areas**

Area F1 contains two 65- by 35-foot storage buildings, one 90- by 35-foot storage building, and one 120- by 35-foot storage building, all possibly used for ammunition storage.

Area F2 contains two 100- by 35-foot storage buildings possibly used for ammunition storage.

**Other Buildings and Facilities**

Twenty-three buildings probably for dependent housing are located in Area H.

**Equipment Storage/Maintenance Areas**

Area J1 contains one 270- by 80-foot probable maintenance building, two 175- by 60-foot multistory probable maintenance buildings, two 170- by 35-foot storage buildings, and two support buildings. The area appears to be connected with vehicle maintenance work.

NPIC/R-446/64

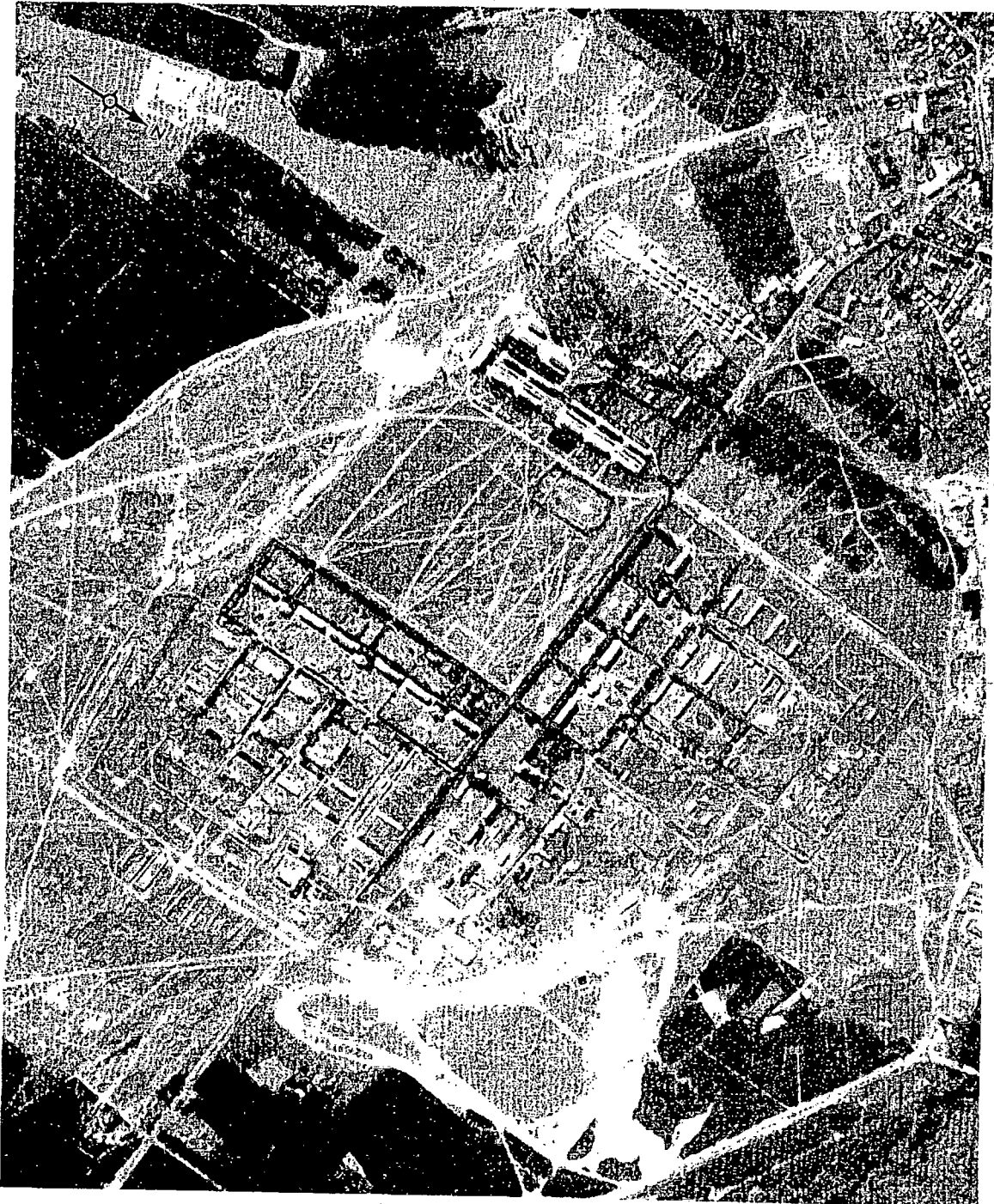


FIGURE 2. SHEPETOVKA ARMY BARRACKS SLAVUTA, USSR, SEPTEMBER 1963.

NPIC J-1336 16/64

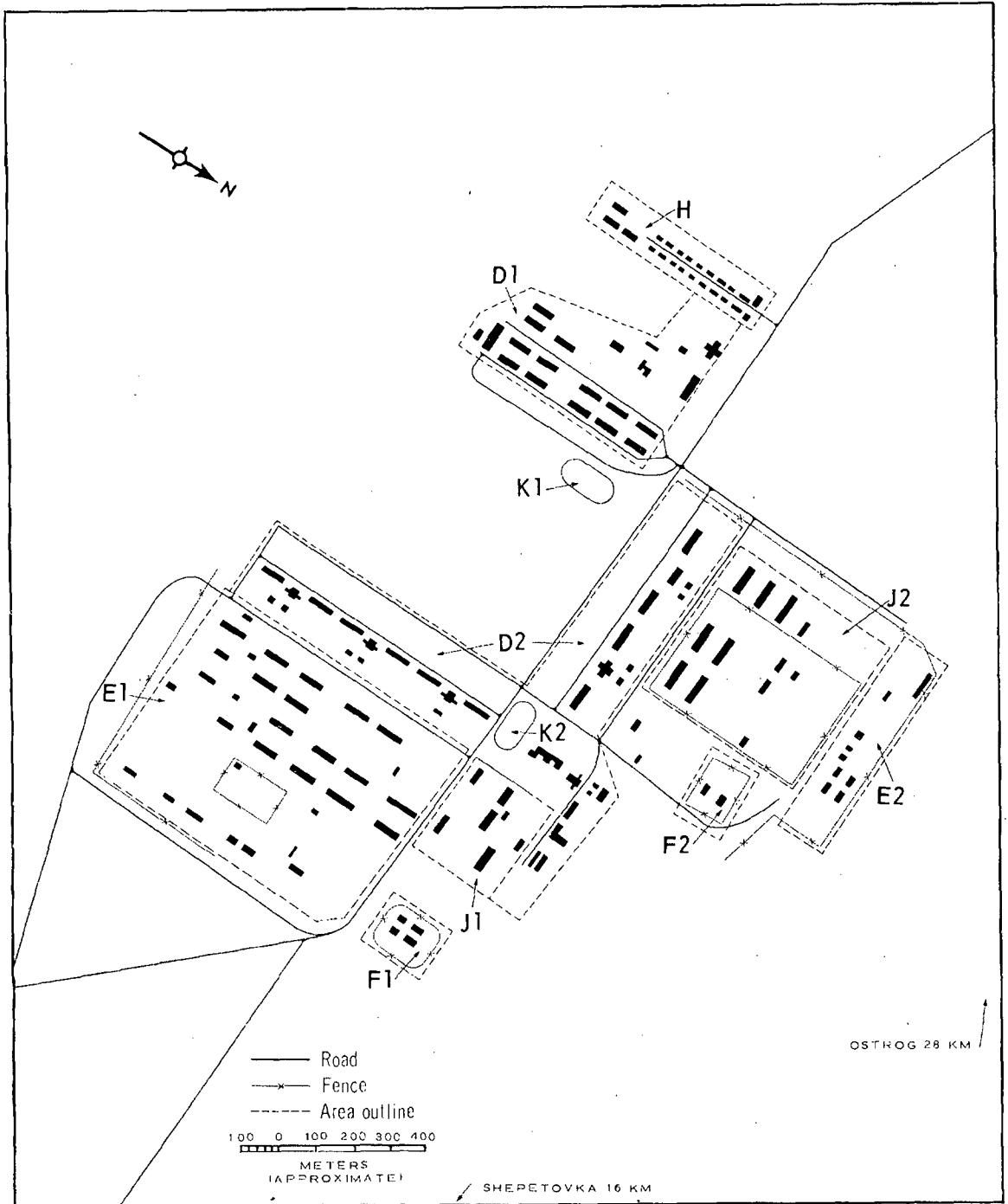


FIGURE 3. SHEPETOVKA ARMY BARRACKS SLAVUTA. Sketch compiled from [redacted] September 1963.

NPIC/R-446/64

Area J2 contains five 275- by 35-foot vehicle storage buildings, two 260- by 35-foot storage buildings, two 150- by 25-foot storage buildings, one 130- by 35-foot administrative building, and two support buildings. Most of

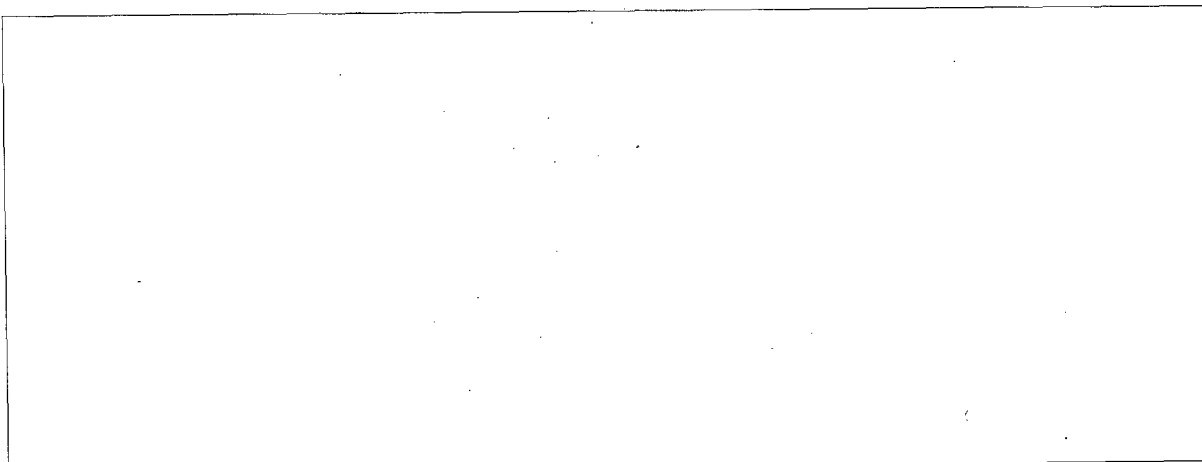
the area is secured with a probable motor park at the north end and the vehicle storage buildings at the other end.

**Athletic Fields**

Areas K1 and K2 are athletic fields.

REFERENCES

PHOTOGRAPHY



MAPS OR CHARTS

US Air Target Mosaic, Series 50, Sheet 0233-12/1ZMA, 1st ed, Aug 57 (SECRET)

US Air Target Chart, Series 100, Sheet 0233-0640-100A, 1st ed, Jan 56 (SECRET)

US Air Target Chart, Series 200, Sheet 0233-12HL, 2d ed, Jun 62 (SECRET)

DOCUMENT

NPIC R/151/64, *Military Training Area Stanuta, USSR, Carpathian MD*, Feb 64 (TOP SECRET RUFF)

REQUIREMENT

DIAAP/1-15-64 (partial answer)

NPIC PROJECT

S-650/64

~~TOP SECRET~~

~~TOP SECRET~~