

PHOTOGRAPHIC INTERPRETATION REPORT

AMMUNITION STORAGE AREA  
VYSHKOV, USSR  
BELORUSSIAN MD

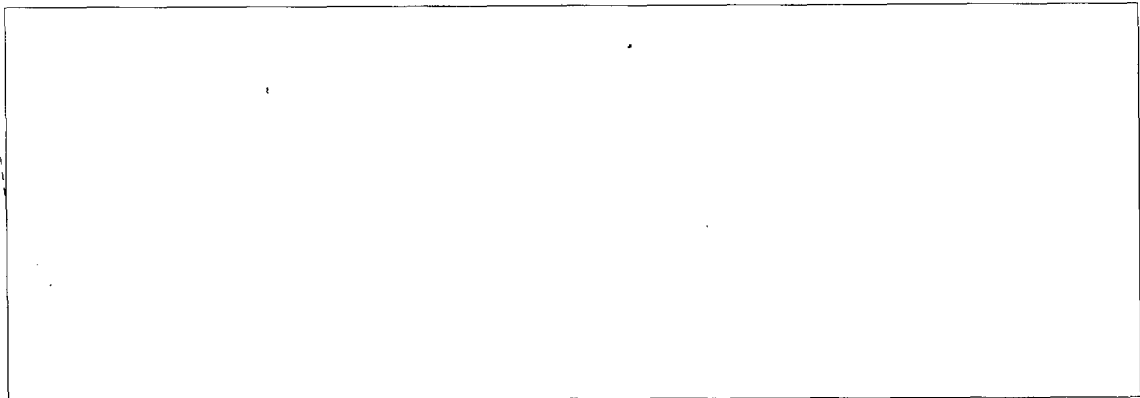
APPROVED FOR  
RELEASE - HISTORICAL  
COLLECTION DIVISION  
HR70-14 DATE:  
07-18-2012



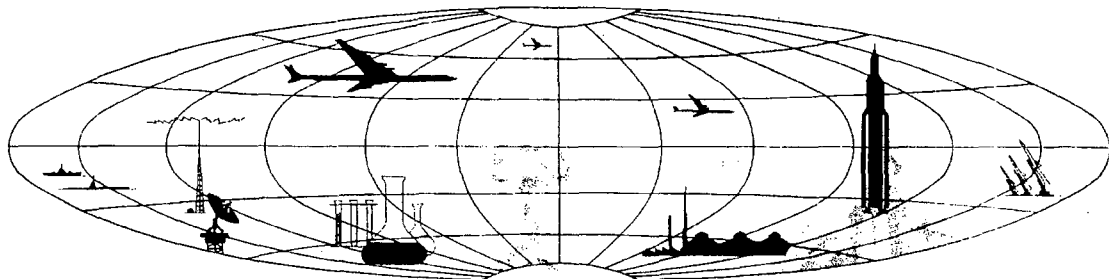
CIA



DIA



NATIONAL PHOTOGRAPHIC INTERPRETATION CENTER



PREFACE

This report is one in a series on Soviet Ground Force and logistic installations being prepared for a DIA/CIA Panel. The series is being coordinated, published and disseminated by NPIC. The photographic analysis is being performed by the NPIC Photographic Analysis Group, the CIA Photographic Intelligence Division (NPIC), and the Production Center 1P1c (DIA). The photographic analysis for this particular report was performed by the NPIC Photographic Analysis Group.

In the interest of uniformity, the titles and letter designators for the facilities observed at these installations are identical with those appearing in the project requirement. When a specific facility is not observed both its title and letter designator are omitted in the report.

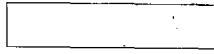
Titles and letter designators for the various facilities are as follows: (A) railroad service; (B) road service, (C) landing strips, (D) administrative and troop housing areas, (E) storage areas, (F) ammunition storage areas, (G) POL storage areas, (H) other buildings and facilities, (J) equipment storage/maintenance areas, (K) athletic fields, (L) small arms firing ranges, (M) driver training areas, (N) tank/assault gun firing ranges, (P) flat trajectory firing ranges, (Q) artillery emplacements (batteries), (R) infantry or combined arms field training area or courses, (S) special training facilities, (T) unidentified facilities or tracking activity.

NPIC/R-319/64

AMMUNITION STORAGE AREA  
52-27N 031-32E  
VYSHKOV, GOMELSKAYA OBLAST, USSR  
BELORUSSIAN MD

BE No: None

AL No: None



COMOR No: None

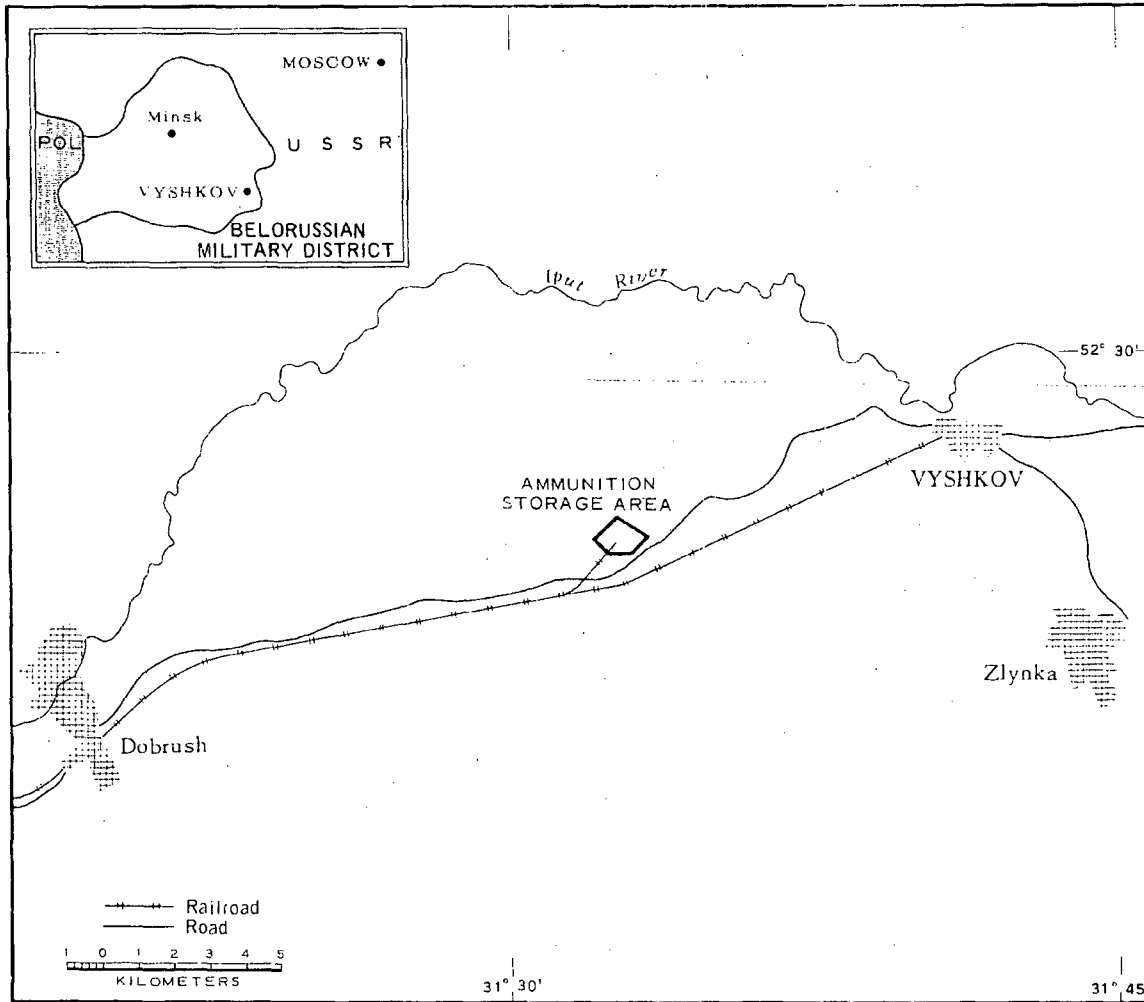


FIGURE 1. LOCATION OF AMMUNITION STORAGE AREA, VYSHKOV.

SUMMARY

An ammunition storage area is located 10 kilometers (km) west-southwest of Vyshkov (52-29N 031-41E) on the north side of the Vyshkov-Gomel rail line (Figure 1). The installation is served by a spur from the main rail line and has an all-weather primary road connection with Gomel. Military installations are located in Gomel, 40 km west.

This installation (Figures 2 and 3) covers approximately 720 acres, is secured by a double fence, and includes 39 unrevetted ammunition storage buildings. Heavy foliage precludes the identification of additional buildings.

[redacted] A support area located outside the main entrance to the installation contains six barracks and two administrative buildings.

The area was covered by 10 KEYHOLE missions between December 1961 and August 1963. Comparative analysis reveals an increase in the level of activity between 1961 and August 1963. Significant changes since December 1961 include the addition of 19 ammunition storage buildings and the [redacted]

DESCRIPTION OF INSTALLATION

Railroad Service

A rail spur from the Vyshkov-Gomel double-track rail line extends northeast into the installation.

Road Service

The installation is served by a primary, all-weather road which runs parallel to and north of the rail line and west to Gomel.

Administrative and Troop Housing Areas

Area D (Figure 3) includes two administrative buildings, six barracks, and four support buildings. Track activity throughout this area indicates occupancy of all the buildings, which are used to provide support for the storage area. Heavy foliage precludes identification of additional buildings.

Ammunition Storage Areas

Area F includes 39 unrevetted 190-by 80-foot ammunition storage buildings.

Nineteen ammunition storage buildings have been completed since 1961. Configuration of this installation indicates additional buildings may be present, but they cannot be confirmed because of the heavy foliage.

An adjacent internally secured area contains an earth bunker [redacted] in diameter for [redacted] [redacted] however, drive-through capability cannot be determined. All ammunition storage buildings have direct access to an elaborate network of internal roads.

NPIC/R-319/64

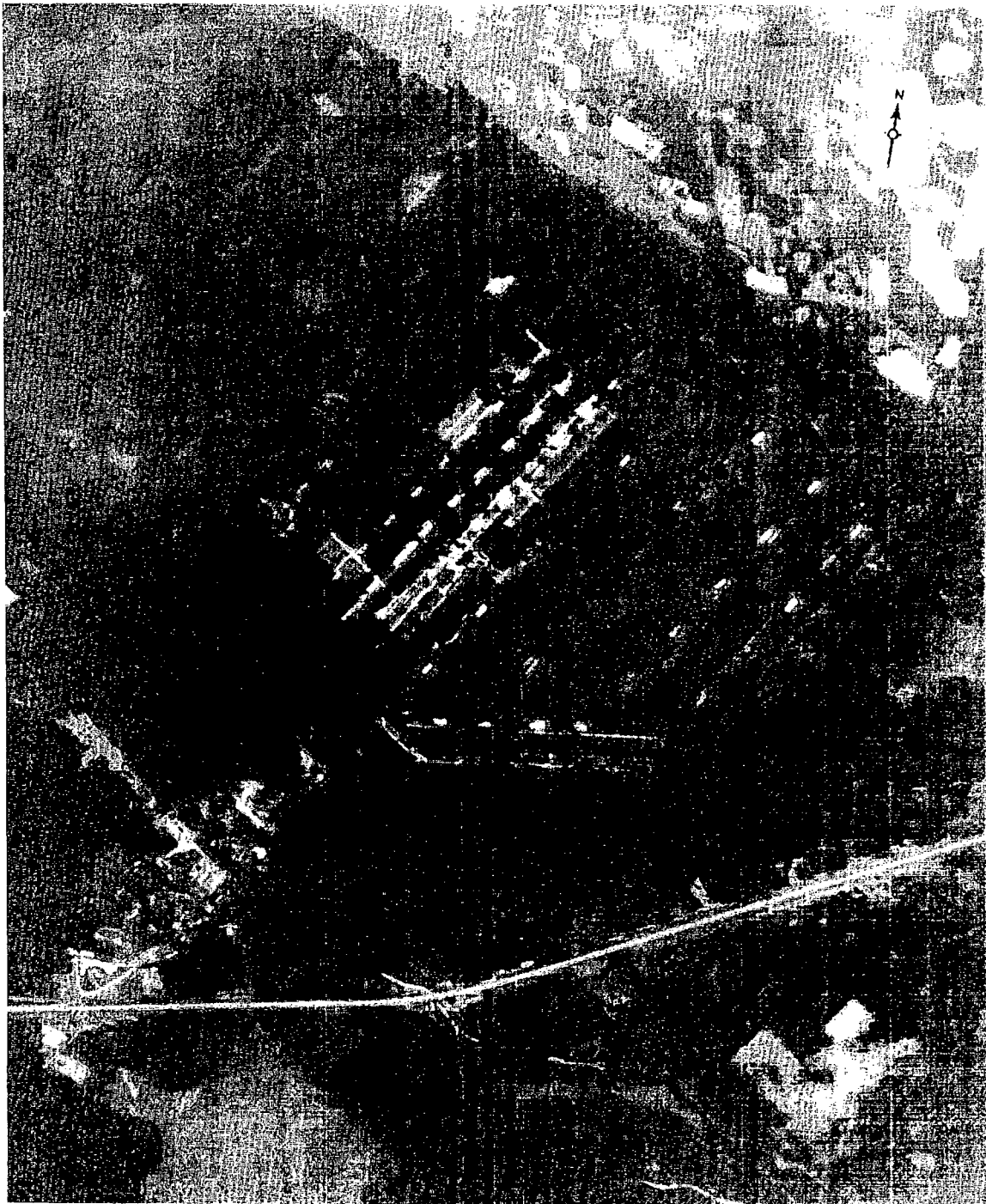


FIGURE 2. AMMUNITION STORAGE AREA, VYSHKOV, JUNE 1963.

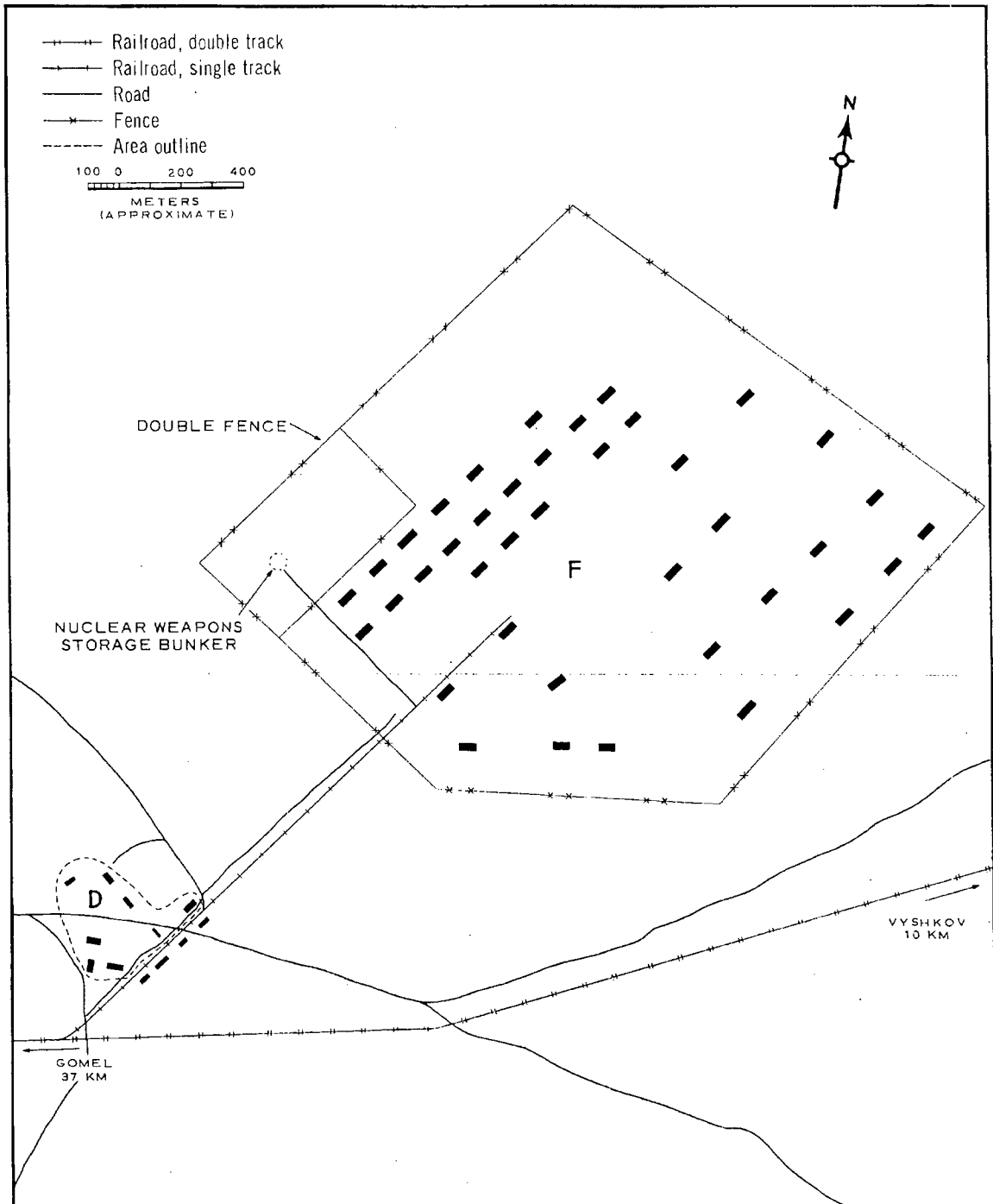


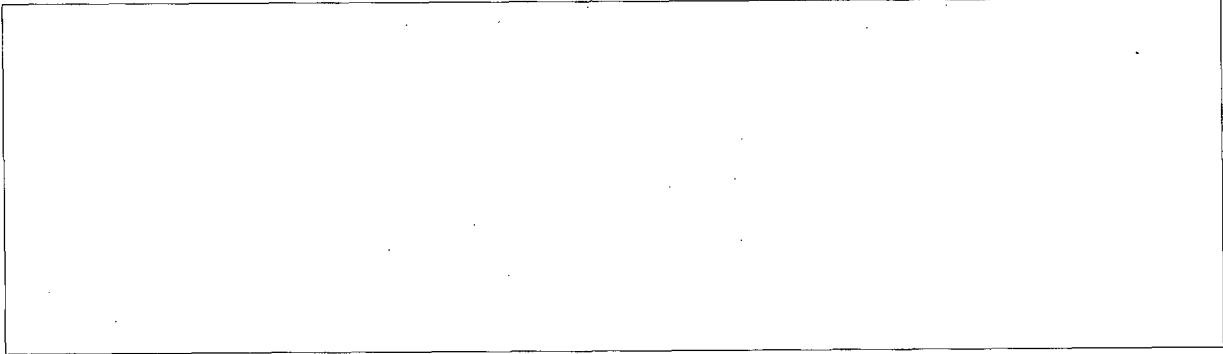
FIGURE 3. AMMUNITION STORAGE AREA, VYSHKOV. Sketch compiled from [ ] April 1962, [ ] June 1963, and [ ] August 1963.

NPIC J-0148 (E/64)

NPIC/R-319/64

REFERENCES

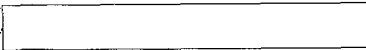
PHOTOGRAPHY




MAPS OR CHARTS

US Air Target Chart, Series 200, Sheet 0167-21HL, 2d ed, Apr 62 (SECRET)

DOCUMENTS

DIA. PC 225/1-1-63, *Installation List, Soviet Ground Forces*, 1 Oct 63 (SECRET) 

DIA. PC 225/1-2-63, *Training Areas, Soviet Ground Forces*, 1 Oct 63 (SECRET) 



REQUIREMENTS

C-RR-4-81,111 (partial answer)

NPIC PROJECT

N-236/64

~~TOP SECRET~~

~~TOP SECRET~~