



PHOTOGRAPHIC INTERPRETATION REPORT

MILITARY TRAINING AREA  
MUKACHEVO, USSR  
CARPATHIAN MD

APPROVED FOR RELEASE  
- HISTORICAL  
COLLECTION DIVISION -  
HR70-14  
DATE: 05-10-2012



CIA



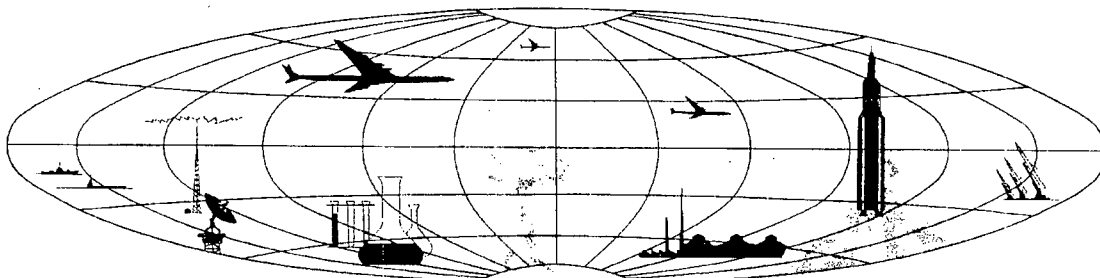
DIA

Handle Via **TALENT - KEYHOLE** Control Only

WARNING

This document contains classified information affecting the national security of the United States within the meaning of the espionage laws U. S. Code Title 18, Sections 793 and 794. The law prohibits its transmission or the revelation of its contents in any manner to an unauthorized person, as well as its use in any manner prejudicial to the safety or interest of the United States or for the benefit of any foreign government to the detriment of the United States. It is to be seen only by personnel especially indoctrinated and authorized to receive TALENT-KEYHOLE information. Its security must be maintained in accordance with KEYHOLE and TALENT regulations.

NATIONAL PHOTOGRAPHIC INTERPRETATION CENTER



MILITARY TRAINING AREA  
MUKACHEVO, USSR  
CARPATHIAN MD

This training area (Figure 1) covers approximately 2,850 acres and is 3.5 miles (5.4 kilometers) south of Mukachevo at 48-24N 022-44E. Facilities include two moving target tank firing ranges, a wheeled-vehicle driver training course, and extensive combat training areas.

The northernmost moving target tank firing range consists of two 2,100-foot firing lanes and two target runs with a maximum firing distance of 3,700 feet from the static firing line. The other moving target tank firing range consists of three 2,250-foot firing lanes and two target runs with a maximum firing distance of 3,800 feet from the static firing line.

The area is served by good roads. A major rail line is located 3 miles (4.9 kilometers)

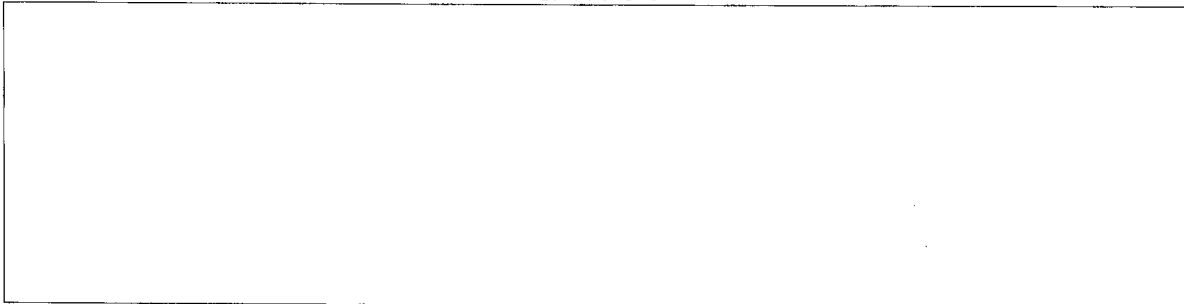
north, running northeast-southwest through Mukachevo.

Photography between July 1961 and September 1963 reveals consistently heavy usage in the summer and fall. Winter photography is not available.

No tracked-vehicle driver training courses, artillery firing positions or impact areas, bivouac areas or tent camps, engineer training sites, water-crossing training sites, or airborne or air transportability training facilities were observed.

Mukachevo Airfield, west of the training area, and the Mukachevo SAM Support Facility, to the south, (annotated on Figure 1) are not associated with the training area.

REFERENCES



MAPS OR CHARTS

ACIC. US Air Target Chart, Series 200, Sheet 0232-24III, 2d ed, Aug 63, scale 1:200,000 (SECRET)

DOCUMENTS



REQUIREMENT

DIAXX 63-99 (partial answer)

NPIC PROJECT

J-446/63

NPIC/R-147/64

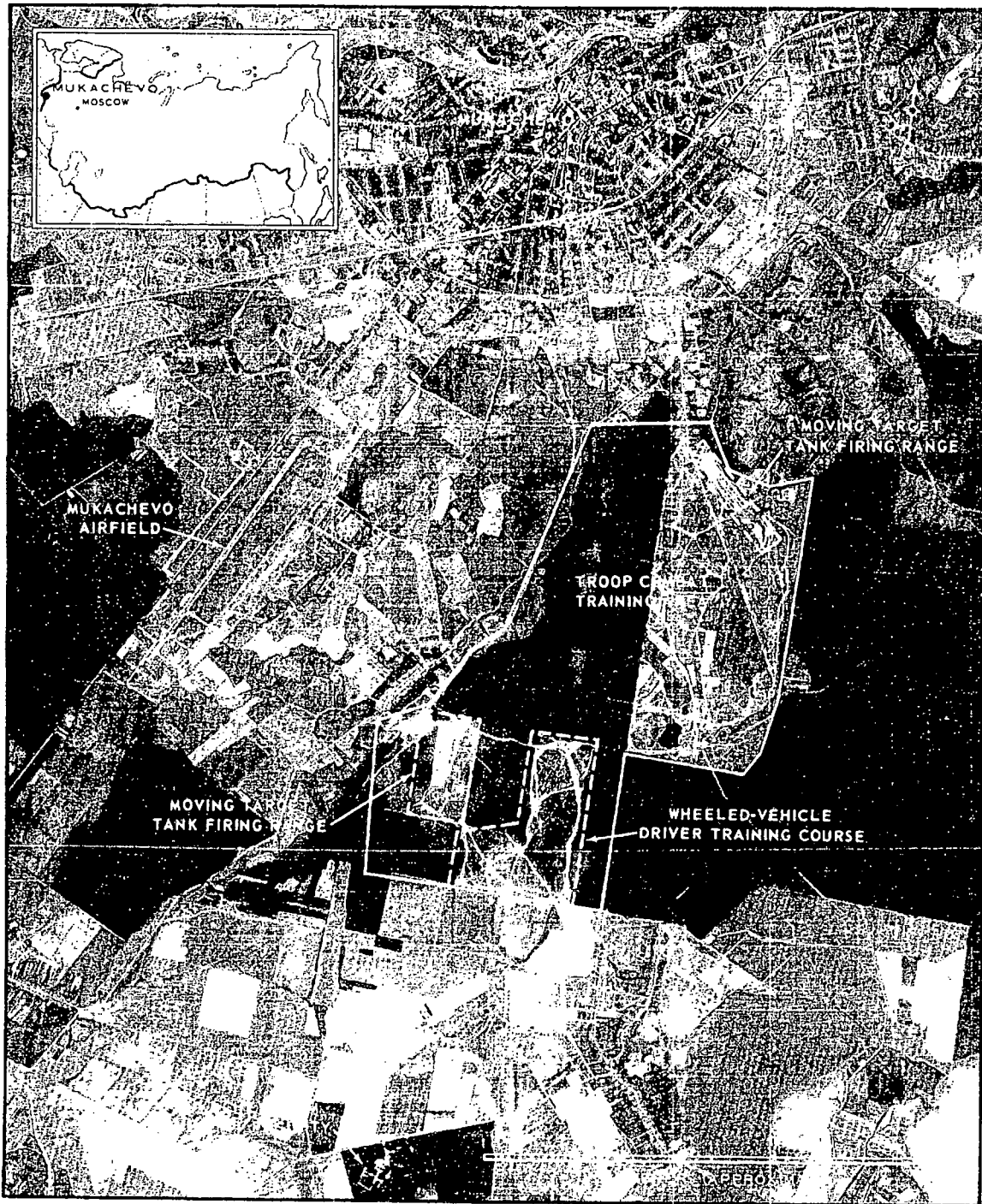


FIGURE 1. MILITARY TRAINING AREA, MUKACHEVO, USSR, JUNE 1963.

~~TOP SECRET~~

~~TOP SECRET~~